

CERTIFICATE OF LOCATION OF GOVERNMENT CORNER

Northeast Corner of Section 27, Township 115N, Range 40W, 5th P.M.

STATE OF MINNESOTA, County of Yellow Medicine

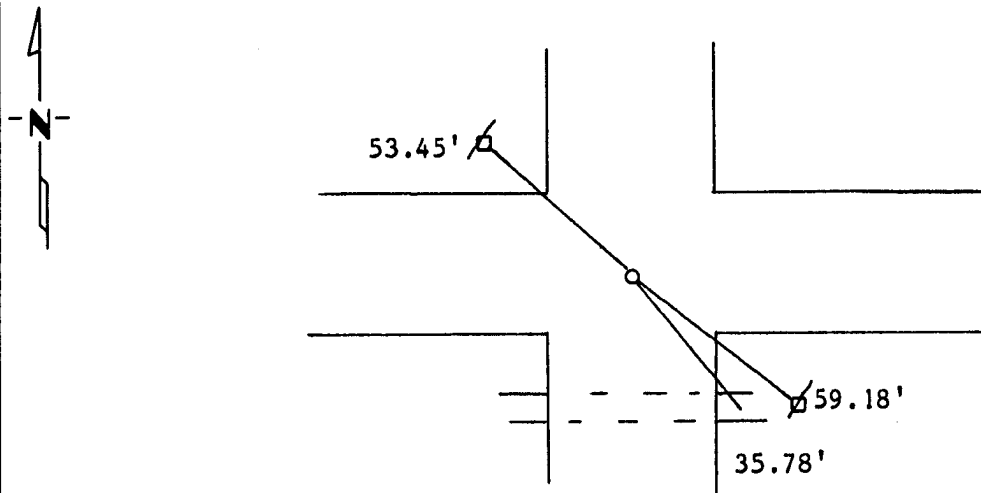
At the corner location shown on the sketch:

On _____ found a _____
DATE

left monument as found, lowered monument, removed monument (explain)

On 8-10-89 placed a 1 1/2" iron pipe with seal.
DATE

SKETCH OF REFERENCE TIES



Nail and washer in Power Pole NW 53.45'

Nail and Bottle Cap in Power Pole SE 59.18'

X in Concrete Culvert SE 35.78'

Statement of evidence relative to this corner location is on back of page.

I hereby certify that this document and the data contained herein was prepared by me or under my direct supervision.

Lyb E Mooney 3-3-90
SIGNATURE DATE

Registration No. 11943

Land Surveyor, Professional Engineer

County Surveyor, County Engineer

OFFICE OF THE COUNTY RECORDER

County of Yellow Medicine

I hereby certify that this document was filed in the Co. Recorders office at 2:55 P.M. on the 1 day of May A.D., 1990

County Recorder Normand Godale

By _____, Deputy

DOCUMENT NO. 197342

Statement of Evidence:

Dug with air compressor August 10, 1989. Found nails all the way down but no stone, I set a $1\frac{1}{4}$ " pipe at road intersection by occupational lines.

Original survey in the 1860's.

John Nordgaard resurveyed the area in 1899.

John Nordgaard used stone in 1912.

John Nordgaard used stone again in 1930.