

Bk 27 pg 76

Index No. \_\_\_\_\_

# CERTIFICATE OF LOCATION OF GOVERNMENT CORNER

Southwest \_\_\_\_\_ Corner of Section 27, Township 115N, Range 40W, 5th P.M.

STATE OF MINNESOTA, County of Yellow Medicine

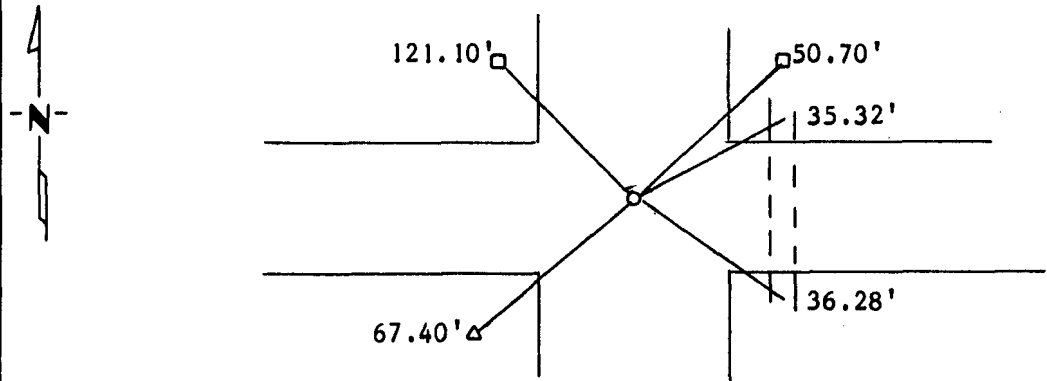
At the corner location shown on the sketch:

On 7-28-89 found a 8"x8"x12" stone with wooden stake beside.  
DATE

left monument as found,  lowered monument,  removed monument (explain)

On 7-28-89 placed a 1 1/4" iron pipe with seal.  
DATE

### SKETCH OF REFERENCE TIES



- Nail and seal in Power Pole NW 121.10'
- Nail and seal in Power Pole NE 50.70'
- Nail and seal in Power Pole SW 67.40'
- X in concrete culvert NE 35.32'
- X in cincrete culvert SE 36.28'

Statement of evidence relative to this corner location is on back of page.

I hereby certify that this document and the data contained herein was prepared by me or under my direct supervision.

Lytle C. Mosey 3-3-1990  
SIGNATURE DATE

Registration No. 119431  
 Land Surveyor,  Professional Engineer  
 County Surveyor,  County Engineer

OFFICE OF THE COUNTY RECORDER  
County of Yellow Medicine

I hereby certify that this document was filed in the Co. Recorders office at 3:10 P.M. on the 1 day of May A.D., 19 90

County Recorder Norman J. Opdahl  
By \_\_\_\_\_, Deputy

DOCUMENT NO. 197345

Statement of Evidence:

Original survey done in the 1860's.

Dug with backhoe found 8"x8"x12" red stone pointed end up with wooden stake beside it. Set 1½" iron pipe with seal.