

CERTIFICATE OF LOCATION OF GOVERNMENT CORNER

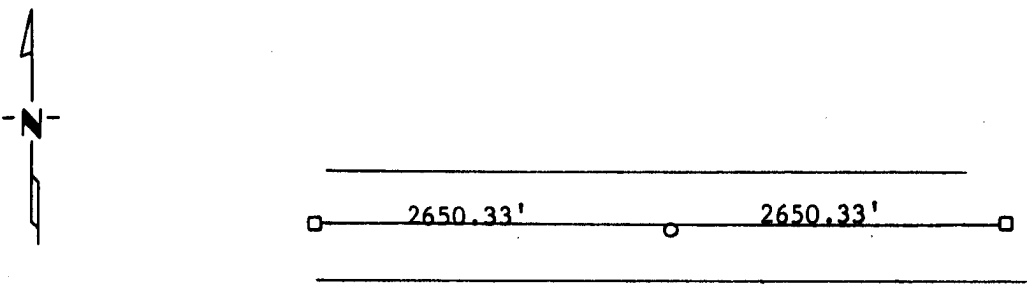
South Quarter Corner of Section 27, Township 115N, Range 40W, 5th P.M.

STATE OF MINNESOTA, County of Yellow Medicine

At the corner location shown on the sketch:

- On _____ found a _____
DATE
- left monument as found, lowered monument, removed monument (explain)
- On 7-28-89 placed a 1 1/4" iron pipe with seal.
DATE

SKETCH OF REFERENCE TIES



Statement of evidence relative to this corner location is on back of page.

I hereby certify that this document and the data contained herein was prepared by me or under my direct supervision.

Angie C. Mearns 3-May-1990
SIGNATURE DATE

Registration No. 11943
 Land Surveyor, Professional Engineer
 County Surveyor, County Engineer

OFFICE OF THE COUNTY RECORDER
County of Yellow Medicine

I hereby certify that this document was filed in the Co. Recorders office at 3:15 P.M. on the 1 day of May A.D., 1990

County Recorder Norman J. Spade
By _____, Deputy

DOCUMENT NO. 197346

Statement of Evidence:

Original survey was done in the 1860's.

South line of Section was established in 1912 by John Nordgaard.

Set South Quarter corner midway and on line as had John Nordgaard,
after digging with a back hoe (Jim Peterson) and finding nothing.