

CERTIFICATE OF LOCATION OF GOVERNMENT CORNER

Northeast Corner of Section 28, Township 114N, Range 45W, 5th P.M.

STATE OF MINNESOTA, County of Yellow Medicine

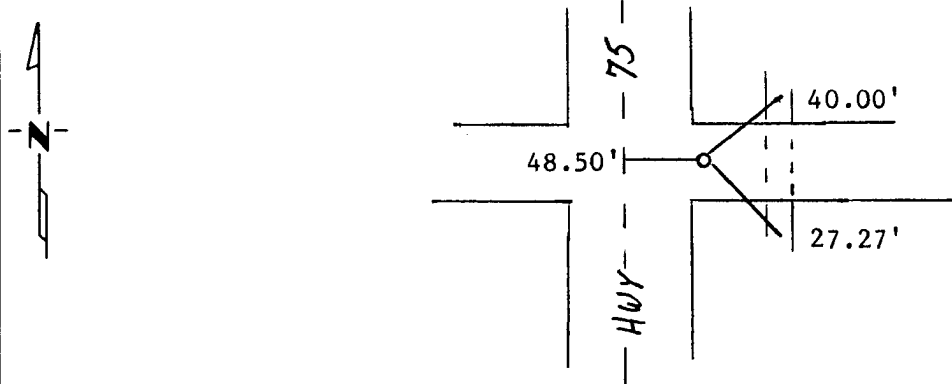
At the corner location shown on the sketch:

On _____ found a _____
DATE

left monument as found, lowered monument, removed monument (explain)

On 08-27-90 placed a 1" iron pipe with seal
DATE

SKETCH OF REFERENCE TIES



PK nail in end of Culvert	NE 40.00'
PK nail in end of culvert	SE 27.27'
Centerline HWY #75	W 48.50'

Statement of evidence relative to this corner location is on back of page.

I hereby certify that this document and the data contained herein was prepared by me or under my direct supervision.

Lytle C. Mowry Aug 29, 1990
SIGNATURE DATE

Registration No. 11943

Land Surveyor, Professional Engineer

County Surveyor, County Engineer

OFFICE OF THE COUNTY RECORDER

County of Yellow Medicine

I hereby certify that this document was filed in the Co. Recorders office at 3:40 P.M. on the 12 day of September A.D., 19 90

County Recorder Norma J. Spall

By _____, Deputy

DOCUMENT NO. 198129

Statement of Evidence:

Original survey done in the 1850's .

Section was remonumented by John Nordgaard in 1901 with 6"x6" Granite Stones on the Corners and the South and West Quarter corners with irons.

In 1941 The State Highway Department moved Highway #75, they recorded a wooden hub 48.5' East of the centerline of Highway #75 as being the Section corner.

On August 27, 1990 we dug with the County Highway Departments backhoe for the corner and found nothing.

One of the County road crew used to own the house to Northeast of the corner he showed us where old Highway #75 was on the property the land is much higher there, the area looks like a total cut area.

I set the corner by projecting the line from the Northeast corner of Section 27 and the North Quarter corner of Section 27 and at equal distance.

John Nordgaard had used this method to set the Quarter corner our corner fell in the location called out by the Minnesota Highway Department being the centerline of the county Road and 48.5 East of the centerline of Highway 75.