

CERTIFICATE OF LOCATION OF GOVERNMENT CORNER

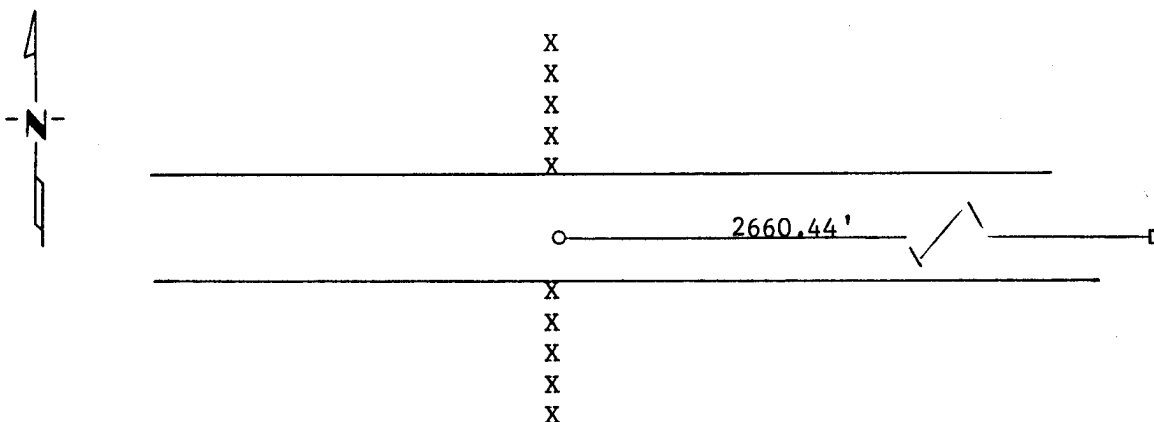
North Quarter _____ Corner of Section 27, Township 114N, Range 45W, 5th P.M.

STATE OF MINNESOTA, County of Yellow Medicine

At the corner location shown on the sketch:

- On 08-21-90 found a 5/8" smooth iron rod with a wooden hub next to it.
DATE
 Rod was 3' below road surface.
 left monument as found, lowered monument, removed monument (explain)
- On 08-21-90 placed a 1" iron pipe with seal on top of 5/8" iron rod.
DATE

SKETCH OF REFERENCE TIES



Statement of evidence relative to this corner location is on back of page.

I hereby certify that this document and the data contained herein was prepared by me or under my direct supervision.

Boyle C. Mooney Aug 29, 1990
SIGNATURE DATE

Registration No. 11943
 Land Surveyor, Professional Engineer
 County Surveyor, County Engineer

OFFICE OF THE COUNTY RECORDER
County of Yellow Medicine

I hereby certify that this document was filed in the Co. Recorders office at 3:45 P.M. on the 12 day of September A.D., 19 90

County Recorder Norman J. Opatow

By _____, Deputy

DOCUMENT NO. 198130

Statement of Evidence:

Original survey done in the 1860's.

In 1901 John Nordgaard Remonumented the area Using 6"x6" Granite stones for the Section corners and irons for the Quarter corners.

On August 21, 1990 we dug by hand and found the iron John Nordgaard set in 1901 3' below road surface, we set a 1" iron pipe above it to raise monument.