

# CERTIFICATE OF LOCATION OF GOVERNMENT CORNER

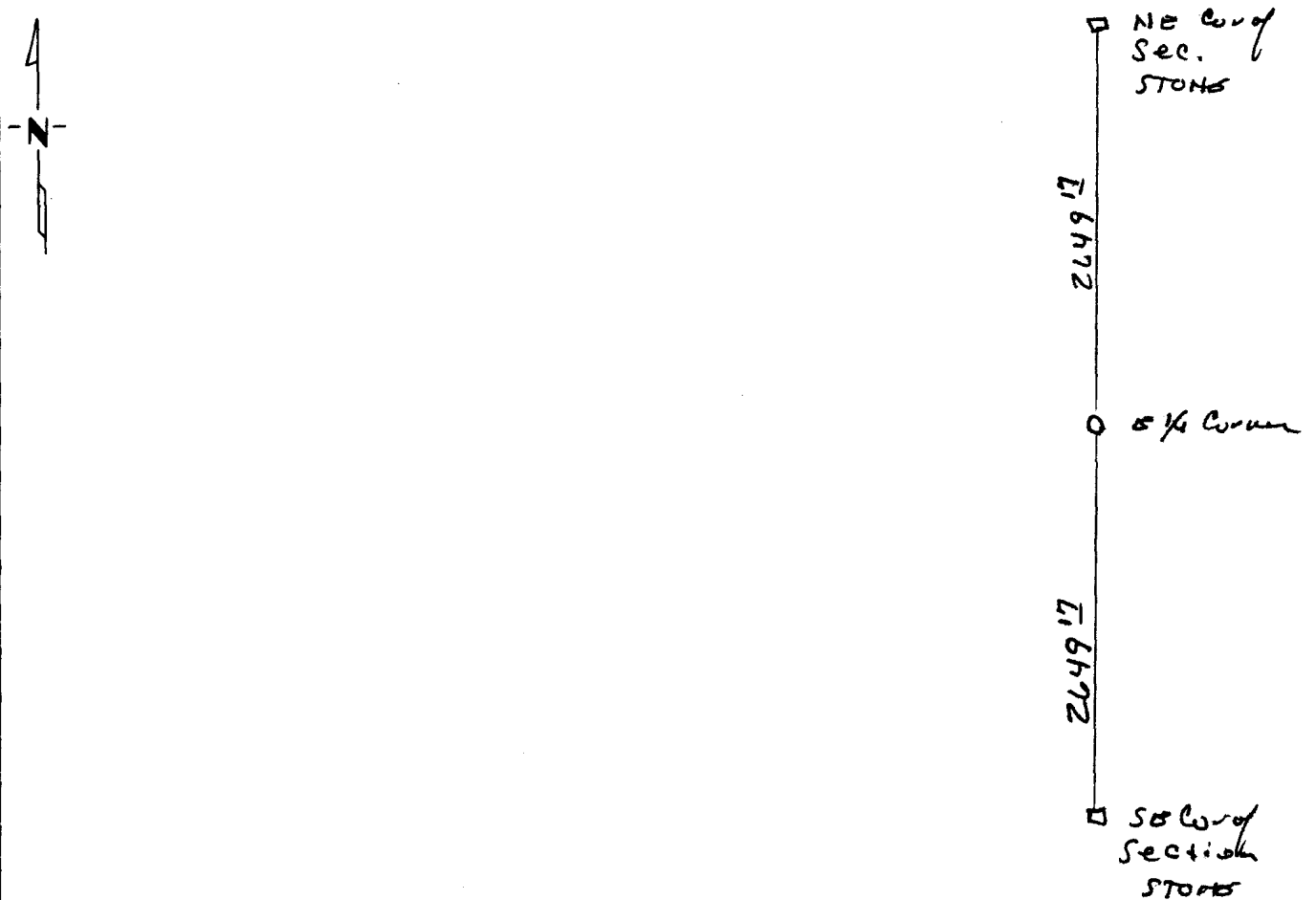
EAST QUARTER \_\_\_\_\_ Corner of Section 29, Township 114 N., Range 39 W, 5th P.M.

STATE OF MINNESOTA, County of YELLOW MEDICINE

At the corner location shown on the sketch:

- On \_\_\_\_\_ found a \_\_\_\_\_  
DATE
- left monument as found,  lowered monument,  removed monument (explain)
- On June 4, 1990 placed a One inch iron pipe with seal  
DATE

## SKETCH OF REFERENCE TIES



Statement of evidence relative to this corner location is on back of page.

RECORDED	<input checked="" type="checkbox"/>
GRANTOR	<input checked="" type="checkbox"/>
GRANTEE	<input checked="" type="checkbox"/>
INDEXED	<input checked="" type="checkbox"/>

I hereby certify that this document and the data contained herein was prepared by me or under my direct supervision.

Lele E. Mooney 6-04-90  
SIGNATURE DATE

Registration No. 11943

- Land Surveyor,  Professional Engineer
- County Surveyor,  County Engineer

OFFICE OF THE COUNTY RECORDER  
County of Yellow Medicine

I hereby certify that this document was filed in the Co. Recorders office at 3:15 P.M. on the 13 day of February A.D., 1991

County Recorder Norman Opelake

By \_\_\_\_\_, Deputy

DOCUMENT NO. 198968

Statement of Evidence:

Original survey done in the 1860's they set the corner midway and on line between section corner stones.

I could not find any record of any other survey. The corner is in a minimum maintenance road the same elevation as the fields.

I had the owners of the east and west side of the roads there they told me the fence for the S $\frac{1}{2}$  of the SE $\frac{1}{4}$  had been there along time and the corner post for the S $\frac{1}{4}$  of the NE $\frac{1}{4}$  had been there as long, I split the distance between these posts ~~it~~ fell 2 $\frac{1}{2}$  feet north of a direct split between the section corner stones.

I set the corner by a direct split.