

# CERTIFICATE OF LOCATION OF GOVERNMENT CORNER

Northeast Corner of Section 31, Township 114N, Range 39W, 5th P.M.

STATE OF MINNESOTA, County of Yellow Medicine

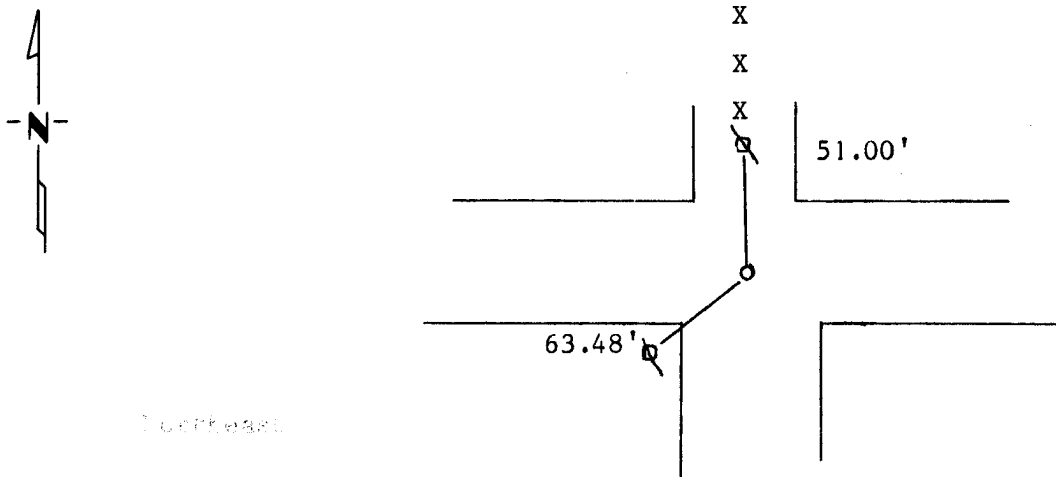
At the corner location shown on the sketch:

On May 31 DATE 1990 found a Square cut stone with 1/2" pipe above it R.L.S.  
seal No. 7469 could not read for sure

left monument as found,  lowered monument,  removed monument (explain)

On May 31 DATE 1990 placed a 5/8" rerod with seal on top of stone at road  
surface.

### SKETCH OF REFERENCE TIES



Nail and seal in Power Pole N 51.00'

Nail and seal in Power Pole SW 63.48'

Statement of evidence relative to this corner location is on back of page.

RECORDED
GRANTOR ✓
GRANTEE ✓
INDEXED

I hereby certify that this document and the data contained herein was prepared by me or under my direct supervision.

Lyle E. Mooney 6-08-1990  
SIGNATURE DATE

Registration No. 11943

Land Surveyor,  Professional Engineer

County Surveyor,  County Engineer

OFFICE OF THE COUNTY RECORDER  
County of Yellow Medicine

I hereby certify that this document was filed in the Co. Recorders office at 3:25 P.M. on the 13 day of February A.D., 1991

County Recorder Norma A. Godeke

By \_\_\_\_\_, Deputy

DOCUMENT NO. 198970

**Statement of Evidence:**

Original survey was done in the 1860,s.

John Nordgaard Remonumented the County in aroud 1905-1930 with 6"x6"  
Granite stones.

County highway department had ties to corner from 1963.

We dug with a jackhammer and found a 1/2" pipe with R.L.S. seal bver  
stone, we could not read number on seal.

We placed a 5/8" rerod with seal at road surface.