

# CERTIFICATE OF LOCATION OF GOVERNMENT CORNER

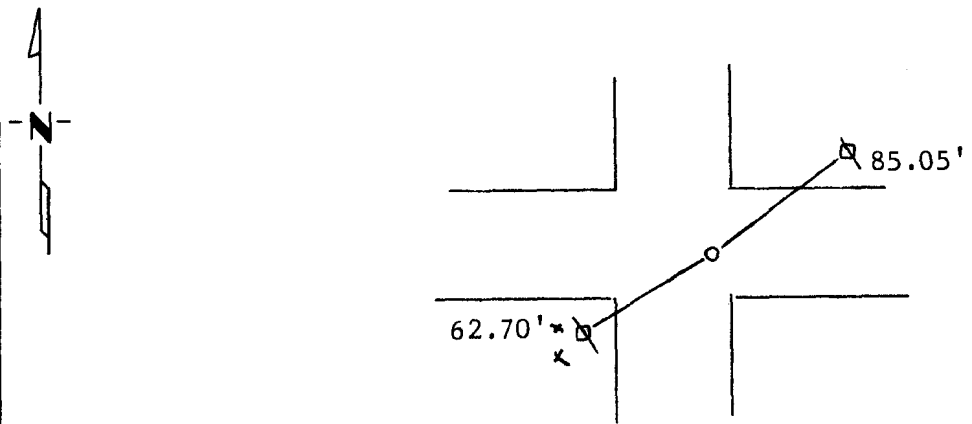
Northeast Corner of Section 32, Township 114N, Range 39W, 5th P.M.

STATE OF MINNESOTA, County of Yellow Medicine

At the corner location shown on the sketch:

- On May 30, 1990 found a Dug with jackhammer found square cut stone 20"  
DATE down.
- left monument as found,  lowered monument,  removed monument (explain)
- On May 30, 1990 placed a 5/8" rerod with seal above stone at road surface,  
DATE Corner is 2' West of East bridge rail.

### SKETCH OF REFERENCE TIES



- Nail and seal in Power Pole NE 85.05'
- Nail and seal in Power Pole SW 62.70'
- Nail and seal in C.F.P. SW 62.25'

Statement of evidence relative to this corner location is on back of page.

RECORDED  
GRANTOR  
GRANTEE  
INDEXED

I hereby certify that this document and the data contained herein was prepared by me or under my direct supervision.

Lytle C. Moseley 6-8-90  
SIGNATURE DATE

Registration No. 11949  
 Land Surveyor,  Professional Engineer  
 County Surveyor,  County Engineer

OFFICE OF THE COUNTY RECORDER  
County of Yellow Medicine

I hereby certify that this document was filed in the Co. Recorders office at 3:30 P.M. on the 13 day of February A.D., 19 91

County Recorder Dennis J. Spadaro  
 By \_\_\_\_\_, Deputy  
 DOCUMENT NO. 198971

Statement of Evidence:

The original survey was done in the 1860,s.

John Nordgaard remonumented the county around 1905-1930 with 6"x6"  
Granite stones.

County highway department had ties to corner from 1963.

We dug wit a jackhammer and found ~~XXXX~~a PK nail on top of stone.

We put a 5/8" rerod with seal at road surface.