

# CERTIFICATE OF LOCATION OF GOVERNMENT CORNER

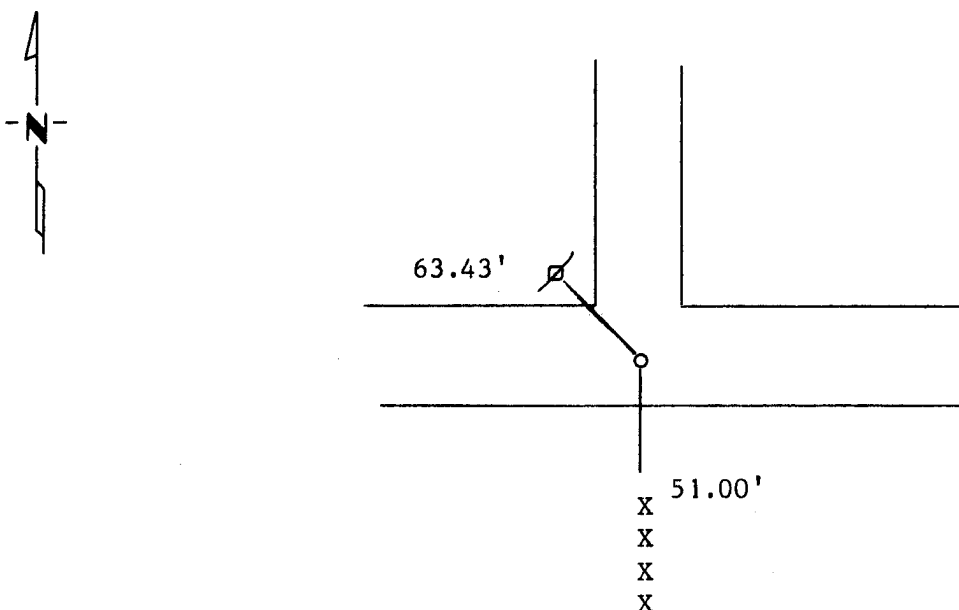
North Quarter \_\_\_\_\_ Corner of Section 32, Township 114N, Range 39W, 5th P.M.

STATE OF MINNESOTA, County of Yellow Medicine

At the corner location shown on the sketch:

- On \_\_\_\_\_ found a \_\_\_\_\_  
DATE
- left monument as found,  lowered monument,  removed monument (explain)
- On May 31, 1990 placed a 5/8" rerod with seal midway and on line, I did not dig  
DATE as nothing was recorded.

## SKETCH OF REFERENCE TIES



Nail and seal in Power Pole NW 63.43'

Nail and seal in end fence post S 51.00'

Statement of evidence relative to this corner location is on back of page.

|           |
|-----------|
| RECORDED  |
| GRANTOR ✓ |
| GRANTEE ✓ |
| INDEXED   |

I hereby certify that this document and the data contained herein was prepared by me or under my direct supervision.

Lytle E. Mooney 6-8-1990  
SIGNATURE DATE

Registration No. 11943

Land Surveyor,  Professional Engineer

County Surveyor,  County Engineer

OFFICE OF THE COUNTY RECORDER  
County of Yellow Medicine

I hereby certify that this document was filed in the Co. Recorders office at 3:35 P.M. on the 13 day of February A.D., 19 91

County Recorder Norman J. Spade

By \_\_\_\_\_, Deputy

DOCUMENT NO. 198972

Statement of Evidence:

Original survey was done in the 1860,s.

John Nordgaard remonumented the county around 1905-1930 with 6"x6"  
Granite stones but to our knowledge he never set ~~any~~  $\frac{1}{4}$  corners.

We did not dig as nothing was ever recorded, we set the corner midway  
and on line.