

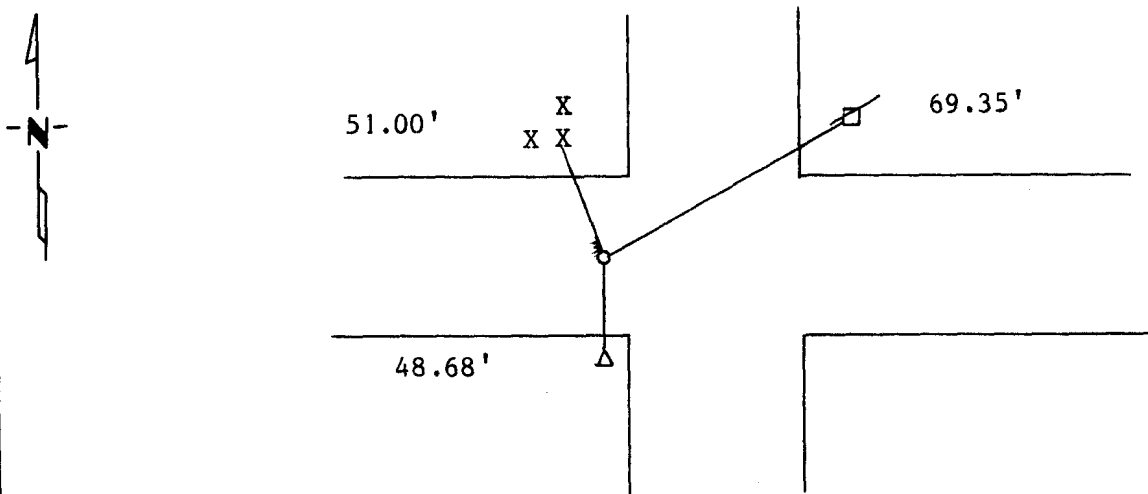
CERTIFICATE OF LOCATION OF GOVERNMENT CORNER

North Quarter Corner of Section 18, Township 114N, Range 40W, 5th P.M.
STATE OF MINNESOTA, County of Yellow Medicine

At the corner location shown on the sketch:

- On _____ found a _____
DATE
- left monument as found, lowered monument, removed monument (explain)
- On 6/16/83 placed a Set 5/8" rorod with Seal. Darin Olsen said it was the
DATE line his father told him was correct going south. BACK

SKETCH OF REFERENCE TIES



Nail and Seal in Fence Post NW 51.00'
 Nail and Seal in Power Pole NE 69.35'
 Nail and Seal in Telephone Pedastel S 48.68'

Statement of evidence relative to this corner location is on back of page.

I hereby certify that this document and the data contained herein was prepared by me or under my direct supervision.

Lyle E. Mooney 5-17-1990
SIGNATURE DATE

Registration No. 11943

- Land Surveyor, Professional Engineer
- County Surveyor, County Engineer

OFFICE OF THE COUNTY RECORDER
County of Yellow Medicine

RECORDED
GRANTOR
GRANTEE
INDEXED

I hereby certify that this document was filed in the Co. Recorders office at 3:45 P.M. on the 13 day of February A.D., 19 91

County Recorder Norman J. Spalding

By _____, Deputy

DOCUMENT NO. 198974

Statement of Evidence:

On line between section corners was 30' South of center line of road.
Distance split was 74' East of field line. I set the corner in the center line of the
highway in the line Darin showed me.