

Y.M. 15-73

Index No. _____

CERTIFICATE OF LOCATION OF GOVERNMENT CORNER

Northeast Corner of Section 29, Township 114N, Range 42W, 5th P.M.

STATE OF MINNESOTA, County of Yellow Medicine

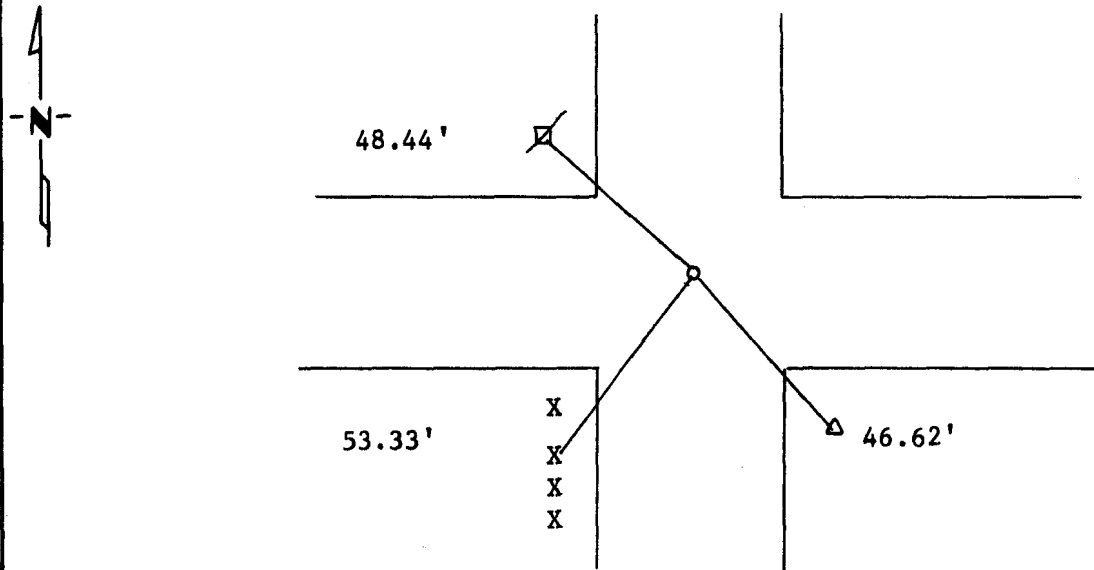
At the corner location shown on the sketch:

On 8/24/83 found a 6" Jasper stone 16" below road surface.
DATE

left monument as found, lowered monument, removed monument (explain)

On 8/24/83 placed a 5/8" rerod on top of stone with seal.
DATE

SKETCH OF REFERENCE TIES



Nail and Seal in Power Pole NW 48.44'
 Nail and Seal in Telephone Pedastel SE 46.62'
 Nail and Seal in Fence Post SW 53.33'

Statement of evidence relative to this corner location is on back of page.

RECORDED
 GRANTOR
 GRANTEE
 INDEXED

I hereby certify that this document and the data contained herein was prepared by me or under my direct supervision.

Lyle E. Mow 5-17-1990
 SIGNATURE DATE

Registration No. 11943

Land Surveyor, Professional Engineer
 County Surveyor, County Engineer

OFFICE OF THE COUNTY RECORDER
 County of Yellow Medicine

I hereby certify that this document was filed in the Co. Recorders office at 4:00 P.M. on the 13 day of February A.D., 19 91

County Recorder Dorend Opdebe

By _____, Deputy

DOCUMENT NO. 198977

Statement of Evidence: