

CERTIFICATE OF LOCATION OF GOVERNMENT CORNER

East Quarter Corner of Section 32, Township 114N, Range 42W, 5th P.M.

STATE OF MINNESOTA, County of Yellow Medicine

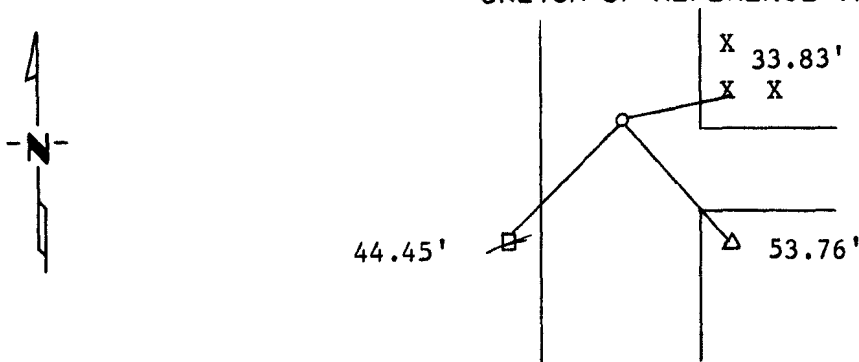
At the corner location shown on the sketch:

On _____ found a _____
DATE

left monument as found, lowered monument, removed monument (explain)

On 4/28.81 placed a 5/8" rered with Seal midway and on line between
DATE
Section Corners.

SKETCH OF REFERENCE TIES



Nail and Seal in Fence Post NE 33.83'
 Nail and Seal in Power Pole SW 44.45'
 Nail and Seal in Telephone Pedastel SE 53.76'

Statement of evidence relative to this corner location is on back of page.

RECORDED
 GRANTOR
 GRANTEE
 INDEXED

I hereby certify that this document and the data contained herein was prepared by me or under my direct supervision.

Lyle C. Mow 5-17-1990
 SIGNATURE DATE

Registration No. 11945

- Land Surveyor, Professional Engineer
 County Surveyor, County Engineer

OFFICE OF THE COUNTY RECORDER
 County of Yellow Medicine

I hereby certify that this document was filed in the Co. Recorders office at 4:20 P.M. on the 13 day of February A.D., 19 91

County Recorder Norman A. Godde

By _____, Deputy

DOCUMENT NO. 198981

Statement of Evidence: