

CERTIFICATE OF LOCATION OF GOVERNMENT CORNER

NORTH QUARTER Corner of Section 10, Township 116 N., Range 40 W., 5 th P.M.

STATE OF MINNESOTA, County of YELLOW MEDICINE

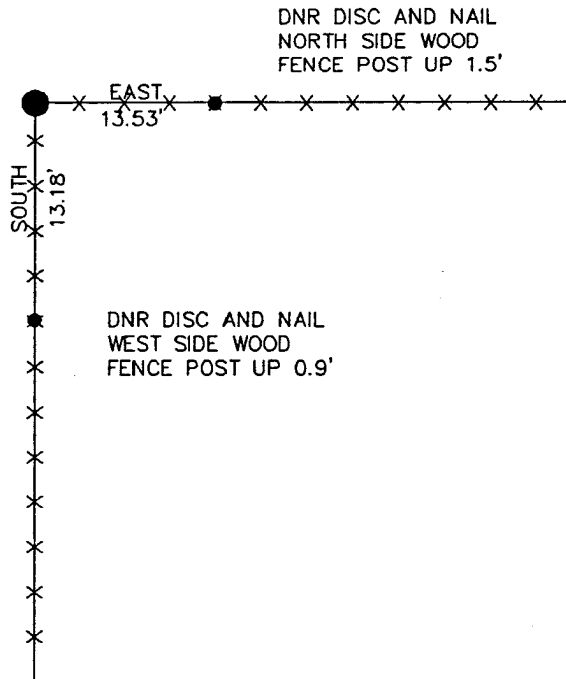
At the corner location shown on the sketch:

On 7/31/91 found a 3/4" IRON ROD UP 0.2'
DATE

left monument as found, lowered monument, removed monument (explain)

On 8/29/91 Placed an ALUMINUM CAP STAMPED "DNR SURVEY MARKER"
DATE
ON TOP OF THE FOUND IRON ROD

SKETCH OF REFERENCE TIES



BEARINGS OBSERVED WITH COMPASS

Statement of evidence relative to this corner location is on back of page. 8/29/91
COW00624.01.00.01

I hereby certify that this document and the data contained herein was prepared by me or under my direct supervision.

Bruce W. Sheppard 9-30-91
SIGNATURE DATE

Registration No. 17003

Land Surveyor, Professional Engineer
 County Surveyor, County Engineer

OFFICE OF THE COUNTY RECORDER
County of Yellow Medicine

I hereby certify that this document was filed in the Co. recorders office at 10:00 A.M. on the 2 day of October A.D., 1991

County Recorder Norman J. Opdahl
By Kay Nordahl, Deputy

DOCUMENT NO. 200404

Me Send copy to Sheppard

North Quarter Corner of Section 10, Township 116 North, Range 40 West

The DNR Bureau of Engineering contacted the following for survey information:

Minnesota Secretary of State's Office
Mn/DOT Offices in St. Paul and Willmar
Yellow Medicine County Offices of the Recorder and Highway Engineer
Montevideo City Engineer's Office

- 1865 U.S. General Land Office notes obtained from the Secretary of State's Office show corner marked with a wood post in a mound with pits as per instructions.
- 1872 A plat of Government Lot 1 of Section 3 obtained from the County Recorder's Office by G. N. Daniels, Surveyor, shows the center of Section 3 but no reference is given to the south quarter corner of Section 3.
- 1874 November, L. R. Moyer's Field Book 3, page 49, obtained from the Montevideo City Engineer's Office shows corner but does not indicate what was found or set. The corner is shown:
40.06 chains (2643.96') from the northeast corner of Section 9
40.09 chains (2645.94') from the center of Section 3
- No Date Page 11 of a Surveyor's Record Book obtained from the County Recorder's Office contains a survey, surveyor not indicated. Survey shows corner but does not indicate what was found or set. The corner is shown:
20 chains (1320.00') from the center of Section 3
- No Date A right-of-way map for U.S. Trunk Highway 212 obtained from the Mn/DOT Office in St. Paul shows the corner at the intersection of fences. A description of a monument at corner or a distance to it is not given.
- 1980 A subdivision of Section 3 obtained from the Mn/DOT Office in Willmar shows corner but does not indicate what was found or set. The corner is shown:
2647.78 feet from the northeast corner of Section 9
2656.20 feet from the center of Section 3
- 1980 Notes about government corners obtained from the Mn/DOT Office in Willmar state that the intersection of fences east and south was used for corner. A monument was not set to mark the location of the corner.
- 1991 July, DNR Bureau of Engineering found a 3/4" diameter iron rod up 0.2 of a foot at corner. The iron rod was found to be:
0.2 of a foot north of a fence east
in line with a fence south

Analysis of the above information led the DNR Bureau of Engineering to conclude that the found iron rod at the intersection of fences marks the obliterated location of the corner.