

CERTIFICATE OF LOCATION OF GOVERNMENT CORNER

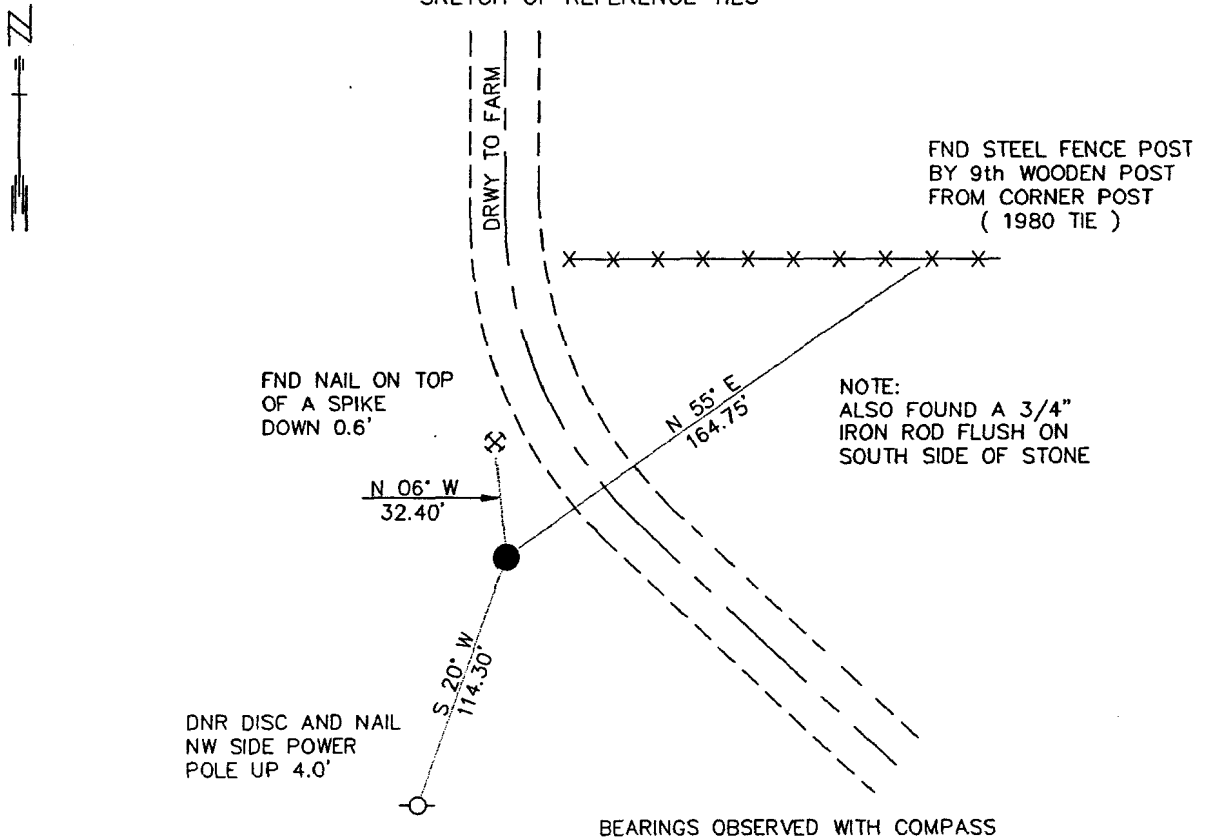
EAST QUARTER Corner of Section 4, Township 116 N., Range 40 W., 5th P.M.

STATE OF MINNESOTA, County of YELLOW MEDICINE

At the corner location shown on the sketch:

- On 7/25/91 found a 6" LONG CAST IRON MONUMENT, FLUSH OVER A
DATE 6" X 8" FIELD STONE DOWN 6"
- left monument as found, lowered monument, removed monument (explain)
- On _____ Placed a _____
DATE

SKETCH OF REFERENCE TIES



BEARINGS OBSERVED WITH COMPASS

Statement of evidence relative to this corner location is on back of page. 8/29/91
COW 00624.01.00.01

I hereby certify that this document and the data contained herein was prepared by me or under my direct supervision.

Bruce W. Shepperd 9-30-91
SIGNATURE DATE

Registration No. 17003
 Land Surveyor, Professional Engineer
 County Surveyor, County Engineer

OFFICE OF THE COUNTY RECORDER
County of Yellow Medicine

I hereby certify that this document was filed in the Co. recorders office at 10:05 A .M. on the 2 day of October A.D., 1991
County Recorder Norman J. Opdahl
By Key Nordahl, Deputy
DOCUMENT NO. 200405

N/C Send copy to Shepperd

The DNR Bureau of Engineering contacted the following for survey information:

Minnesota Secretary of State's Office
Mn/DOT Offices in St. Paul and Willmar
Yellow Medicine County Offices of the Recorder and Highway Engineer
Montevideo City Engineer's Office

- 1865 U.S. General Land Office notes obtained from the Secretary of State's Office show corner marked with a wood post in a mound with pits as per instructions.
- 1872 A plat of Government Lot 1 of Section 3 obtained from the County Recorder's Office by G. N. Daniels, Surveyor, states that the quarter post at this corner is:
40.20 chains (2653.20') from the center of Section 3
- 1874 November, L. R. Moyer's Field Book 3, page 49, obtained from the Montevideo City Engineer's Office shows corner but does not indicate what was found or set. The corner is shown:
40.22 chains (2654.52') from the center of Section 3
39.95 chains (2636.70') from the northeast corner of Section 9
- 1894 December, Page 112 of a Surveyor's Record Book obtained from the County Recorder's Office contains a survey by John Norgaard. Survey states that a stake in a mound, which is said to be the old post located by Moyer, was found at corner.
- 1896 October, L. R. Moyer's Field Book 8, page 74, obtained from the Montevideo City Engineer's Office shows a stone and old quarter post at corner but does not indicate if found or set. The corner is shown:
40.10 chains (2646.60') from the northeast corner of Section 9
35.98 chains (2374.68') from the northeast corner of Section 4
- No Date Page 11 of a Surveyor's Record Book obtained from the County Recorder's Office contains a survey, surveyor not indicated. Survey shows corner but does not indicate what was found or set. The corner is shown:
20.30 chains (1339.80') from the center of Section 3
- 1941 A book that contains ties to government corners obtained from the County Highway Engineer's Office shows that a stone was found at the surface at corner. The following ties are shown to corner:
fourth fence post, south-southeast, 79.9 feet
eighth fence post, east-southeast, 112.2 feet
12" Elm, north, 159.7 feet
- 1980 June, A Certificate of Location of Government Corner signed by Robert C. Jones, RLS #11864, obtained from the County Recorder's Office states that an 18" by 20" by 6" field stone was found down 6" at corner. A 3/4" by 24" long iron pin was set on the south side of the stone and a 6" long Mn/DOT cast iron monument was set over the stone. The following ties are shown to corner:
a) in line with center line of farm driveway north
b) copper nail and disk in southeast side of third wood post from fence corner, north-northeast, 90.27 feet

- c) front face of steel post painted orange by ninth wood post from fence corner, northeast, 164.72 feet
- d) copper nail and disk in southeast side of power pole, southwest, 114.40 feet
- e) southeast side of steel fence post, north-northwest, 117.20 feet

1980 A subdivision of Section 3 obtained from the Mn/DOT Office in Willmar shows that an 18" by 20" by 6" stone was found at corner. The corner is shown:

- 2669.81 feet from the center of Section 3
- 2643.11 feet from the northeast corner of Section 9
- 2373.81 feet from the northeast corner of Section 4

1991 July, DNR Bureau of Engineering found a cast iron monument at corner. Searched for and found one record tie as shown on sketch of reference ties.

Analysis of the above information led the DNR Bureau of Engineering to conclude that the found cast iron monument which was set over a stone marks the original location of the corner as monumented by L. R. Moyer in 1896.