

CERTIFICATE OF LOCATION OF GOVERNMENT CORNER

Northeast Corner of Section 32, Township 115 N, Range 38 W, 5th P.M.

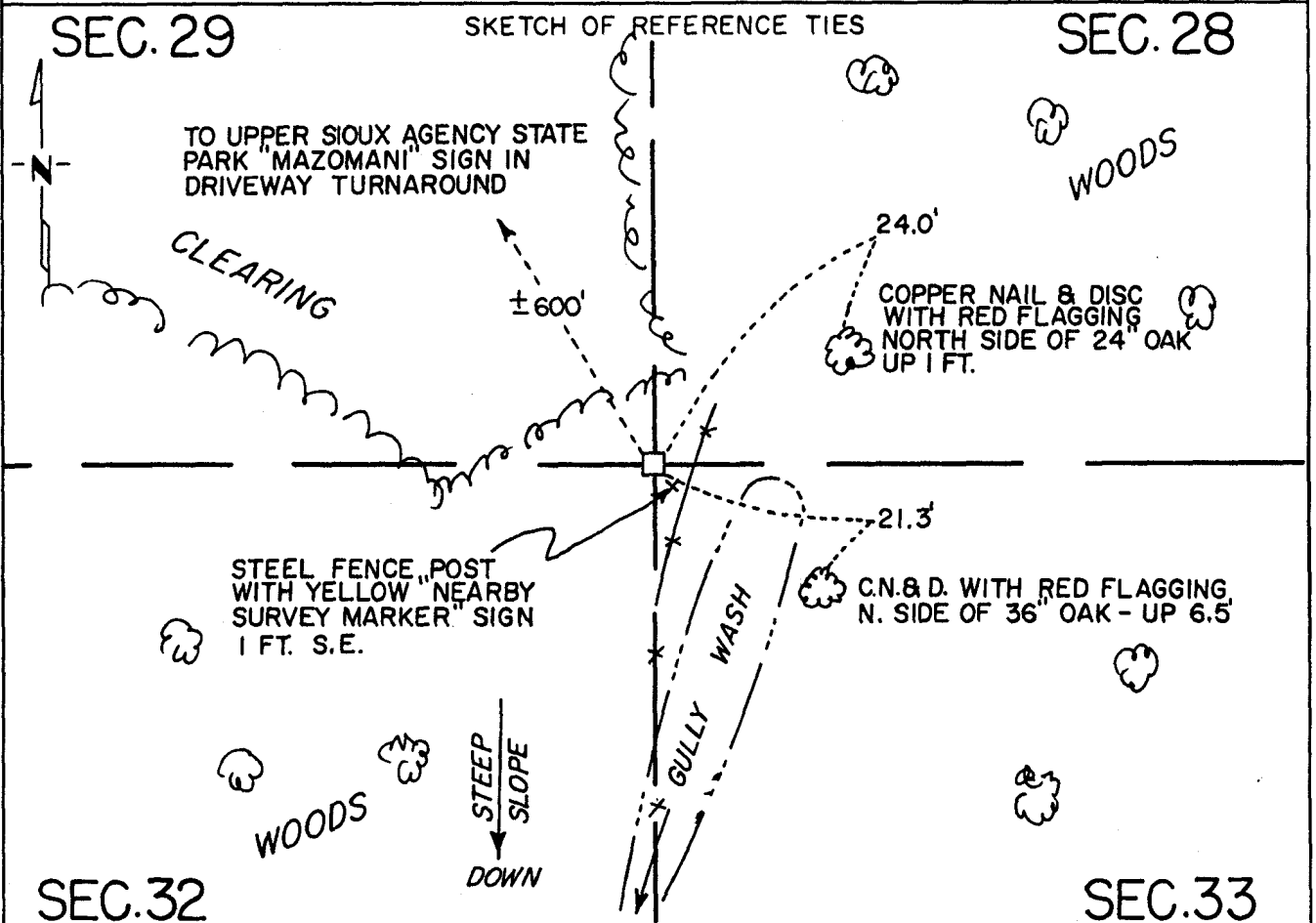
STATE OF MINNESOTA, County of Yellow Medicine

At the corner location shown on the sketch:

On July 17, 1991 found a 6" x 6" square cut granite monument projecting about
DATE 5" above ground

left monument as found, lowered monument, removed monument (explain)

On _____ placed a _____
DATE



Statement of evidence relative to this corner location is on back of page.

I hereby certify that this document and the data contained herein was prepared by me or under my direct supervision.

Robert Jones 11-8-91
SIGNATURE DATE

Registration No. 11864

Land Surveyor, Professional Engineer

County Surveyor, County Engineer

OFFICE OF THE COUNTY RECORDER
County of Yellow Medicine

I hereby certify that this document was filed in the Co. Recorders office at 10:20 A.M. on the 12 day of November A.D., 19 91

County Recorder Normand Gidycz

By _____, Deputy

DOCUMENT NO. 200647

Statement of Evidence:

Northeast Corner Section 32, T 115 N, R 38 W

- 1864 - The original Public Land Survey was completed by Charles E. Davis and James Watson Webb, Jr. A wood post was set in a dirt mound to mark the corner. Pits were dug to build the mound.
- 1901 - John Norgaard, Yellow Medicine County Surveyor, found a stake in the government mound. He set a 6" by 6" by 24" long square cut granite monument so that the top was 3" above ground to perpetuate the corner location. This information is in Surveyor's Book B, page 70 in the Yellow Medicine County Recorder's office.
- 1934 - The Minnesota Highway Department right of way map from this era shows that a stone was found at the corner. The map depicts the east line of Section 32 as crossing the centerline of T.H. 67 about at P.O.T. 302+95 and as being about 1150 feet northerly of the centerline of T.H. 67 as measured along the section line. These distances were scaled on the right of way map.
- 1991 - R. C. Jones, Registered Land Surveyor with Mn/DOT, found a 6" by 6" square cut granite monument projecting about 5" above the ground.

The monument is located about 340 feet north of a curve in a gravel road, which more or less parallels the Yellow Medicine River in this area. It is about 530 feet north of the northwesterly side of the Yellow Medicine River. It is nearly in line with a broken down barbed wire fence located between the monument and the road to the south. It is 1158.88 feet northerly of T.H. 67 P.O.T. 303+05.73 as measured along the section line.

The granite monument is accepted as the corner location because the record evidence indicates that it is a perpetuation of the original government corner.

For additional information, contact the Mn/DOT Surveys Section at Willmar, Mn 56201.