

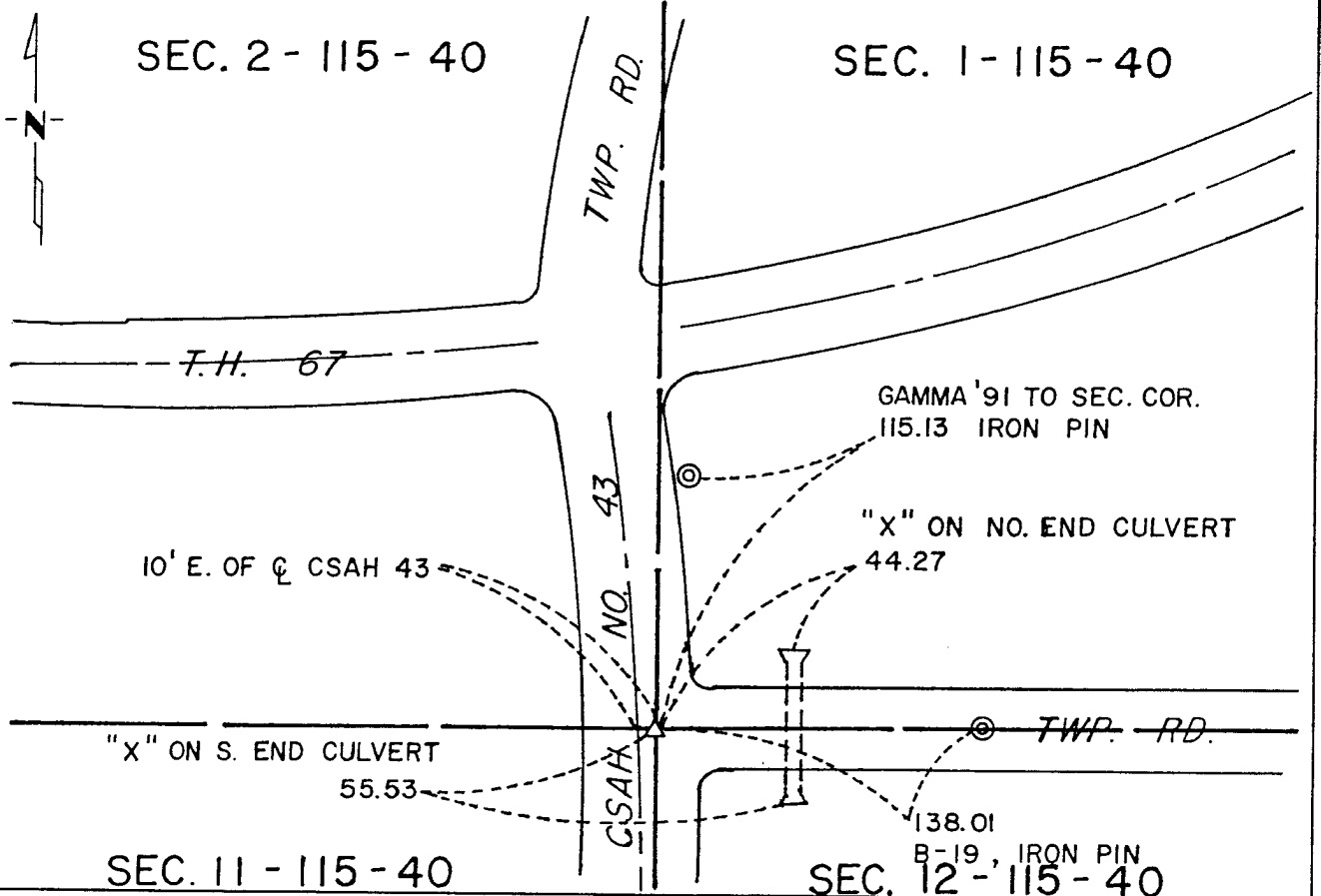
CERTIFICATE OF LOCATION OF GOVERNMENT CORNER

Northeast Corner of Section 11, Township 115, Range 40, _____ P.M.
STATE OF MINNESOTA, County of Yellow Medicine

At the corner location shown on the sketch:

- On MAY found a Brass disc on 6' concrete post, flush
DATE
- left monument as found, lowered monument, removed monument (explain)
- On 9-19-91 placed a 18" Iron pin with aluminum cap stamped SEC. COR. and P.I.
DATE 240' south of C T.H. 67

SKETCH OF REFERENCE TIES



Statement of evidence relative to this corner location is on back of page.

I hereby certify that this document and the data contained herein was prepared by me or under my direct supervision.

Robert Gaus 11-4-91
SIGNATURE DATE

Registration No. 11864

- Land Surveyor, Professional Engineer
- County Surveyor, County Engineer

OFFICE OF THE COUNTY RECORDER
County of Yellow Medicine

I hereby certify that this document was filed in the Co. Recorders office at 10:25 A.M. on the 12 day of November A.D., 19 91

County Recorder Norma J. Guduse

By _____, Deputy

DOCUMENT NO. 200648

Statement of Evidence:

Northeast Corner Section 11, T 115 N, R 40 W

1991 - The concrete bench mark monument that was found in 1976 was recovered in May of 1991 by Matt Schlagel, Land Surveyor in Training with Mn/DOT. The concrete monument was destroyed when the intersection of T.H. 67 with a county highway was reconstructed.

For a complete history of this corner, see Document No. 170327 that was filed with the Yellow Medicine County Recorder on October 4, 1977.