

CERTIFICATE OF LOCATION OF GOVERNMENT CORNER

NORTHEAST Corner of Section 19, Township 115, Range 42, 5th P.M.

STATE OF MINNESOTA, County of YELLOW MEDICINE

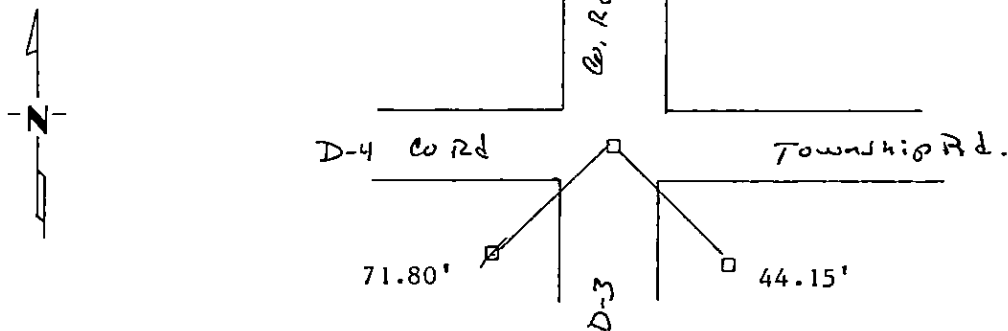
At the corner location shown on the sketch:

On OCT.15/1990 found a 6x6" Granite stone 18" down
DATE

left monument as found, lowered monument, removed monument (explain)

On OCT.15/1990 placed a 1" iron pipe w/seal on top of stone.
DATE

SKETCH OF REFERENCE TIES



Nail and seal in power pole SW. 71.80'
Bent 1 1/2" iron pipe SE. 44.15'

Statement of evidence relative to this corner location is on back of page.

I hereby certify that this document and the data contained herein was prepared by me or under my direct supervision.

Hugh C. Mooney Jan 13, 1997
SIGNATURE DATE

Registration No. 11943

Land Surveyor, Professional Engineer

County Surveyor, County Engineer

OFFICE OF THE COUNTY RECORDER
County of Yellow Medicine

I hereby certify that this document was filed in the Co. Recorders office at 9:20 A.M. on the 8th day of June A.D., 19 93

County Recorder Norman J. Opdahl

By Norman J. Opdahl Deputy

DOCUMENT NO. 204598

Statement of Evidence:

Original Survey done by C. Edie Rain Sept 29, 1864

John nordgarrd resurveyed Yellow Med. County setting
Grante Stones for all the Section Corners early 1900's

Highway department found the stone and set a iron pipe
45 feet SW and SE. as witness corners

I found one of the pipes dug and found the Stone.