

CERTIFICATE OF LOCATION OF GOVERNMENT CORNER

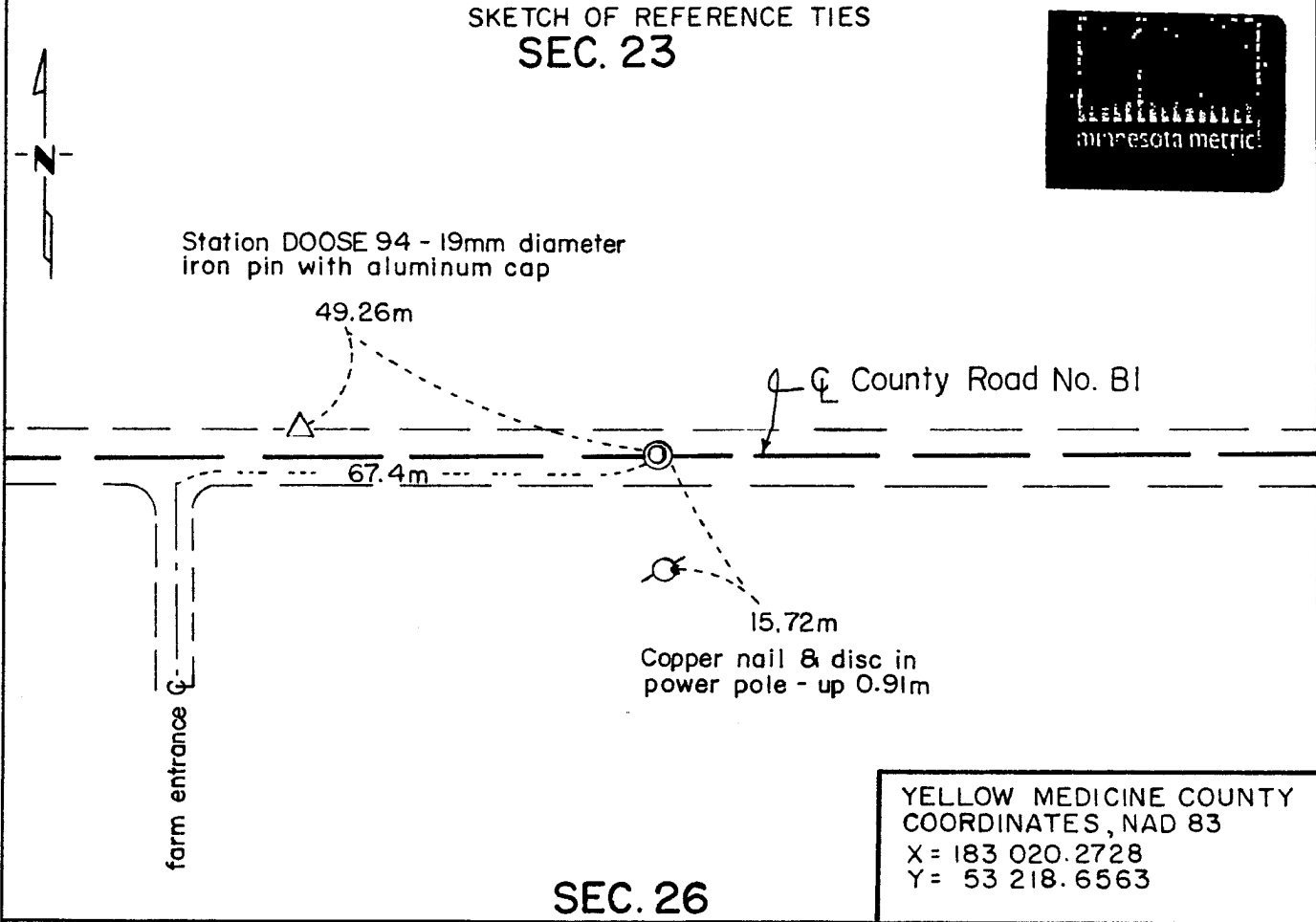
North Quarter _____ Corner of Section 26, Township 115 N, Range 39 W, 5th P.M.

STATE OF MINNESOTA, County of Yellow Medicine

At the corner location shown on the sketch:

- On May 9, 1994 found a nothing
DATE
- left monument as found, lowered monument, removed monument (explain)
- On June 14, 1994 placed a 19mm diameter iron pin with aluminum cap stamped
DATE "N 1/4 26" about 152mm below the road surface

SKETCH OF REFERENCE TIES SEC. 23



Statement of evidence relative to this corner location is on back of page.

I hereby certify that this document and the data contained herein was prepared by me or under my direct supervision.

Robert J. Jans 6-16-94
SIGNATURE DATE

Registration No. 11864

- Land Surveyor, Professional Engineer
- County Surveyor, County Engineer

OFFICE OF THE COUNTY RECORDER
 County of Yellow Medicine

I hereby certify that this document was filed in the Co. Recorders office at 11:10 A.M. on the 17 day of June A.D., 19 94

County Recorder [Signature]

By _____, Deputy

DOCUMENT NO. 206967

Statement of Evidence:

North Quarter Corner Section 26, T 115 N, R 39 W

- 1864 - The original Public Land Survey was completed by Charles E. Davis and James Watson Webb, Jr. A wood post was set in a dirt mound to mark the corner. Pits were dug as per instructions.
- 1874 - O. Quam, Yellow Medicine County Surveyor, found post. Survey Book A, page 10
- 1892 - Jonah Peterman, Yellow Medicine County Surveyor, found government corner (probably the wood post) Survey Book A, page 60
- 1914 - John Norgaard, Yellow Medicine County Surveyor, could not find the corner. He established the corner at equal distance between the section corners. He did not state what was set to mark the corner.
- 1988 - Duane Bonnema, Registered Land Surveyor, apparently did not find anything marking this corner. He set a capped 3/4" diameter iron monument equidistant between the section corners. It was located at the centerline of east/west County Road No. B1.
- 1992 - A Yellow Medicine County Highway Department survey crew found a railroad spike about 3" below the road surface. It was located at County Road No. B1 P.I. station 79+87.84, which is 0.24 ft. west and 3.19 ft. north of the lost location. The county road was rebuilt in 1992.
- 1994 - Matt Schlagel, Land Surveyor in Training with Mn/DOT, searched for this corner but did not find anything. The corner monumentation was probably destroyed when the county road was rebuilt.

A 19mm diameter iron pin with an aluminum cap stamped "N 1/4 26" was set 152mm below the road surface. It is located at the prorated distance for County Road No. B1 P.I. station 79+87.84. This position is accepted as the corner location because it is only 0.073m west and 0.972m north of the lost location.

For additional information, contact the Mn/DOT Surveys Section at Willmar, Mn 56201.