

CERTIFICATE OF LOCATION OF GOVERNMENT CORNER

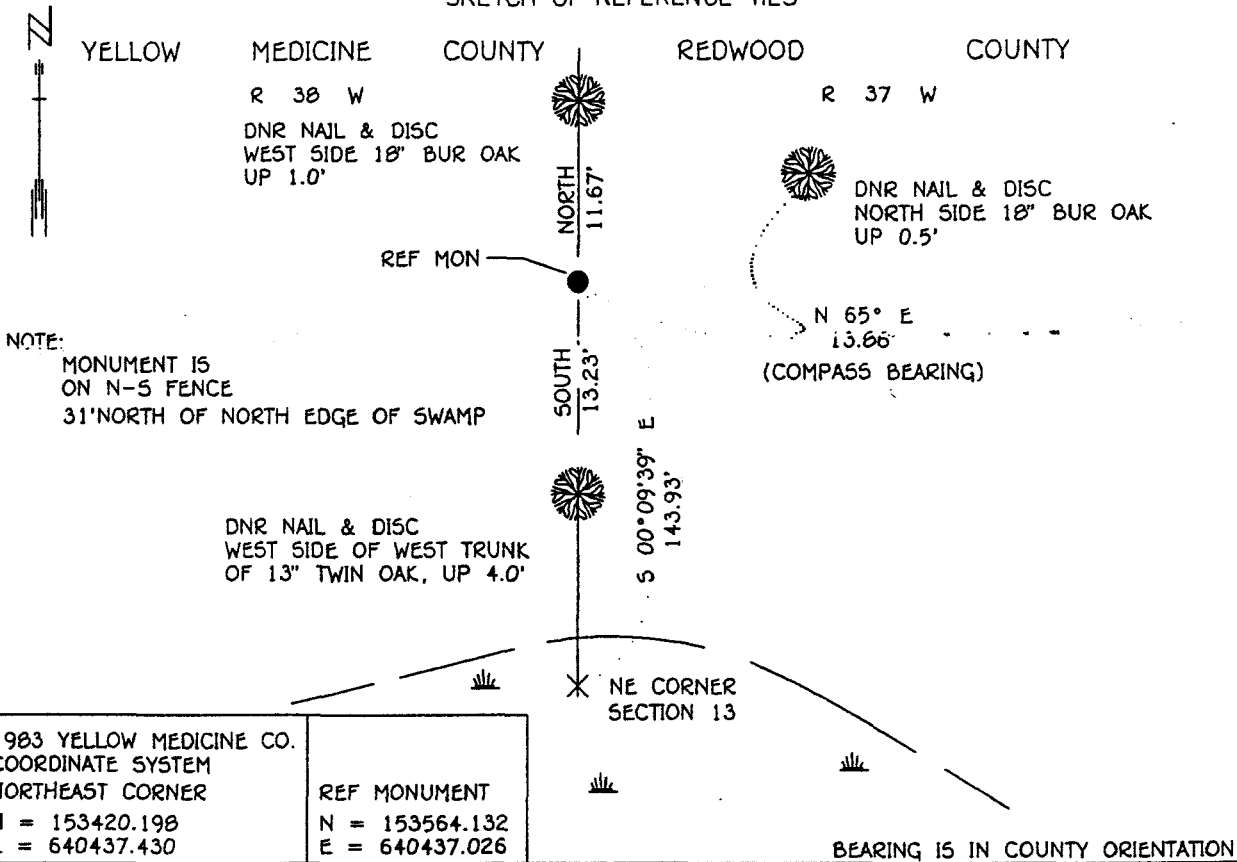
NORTHEAST Corner of Section 13, Township 114 N, Range 38 W, 5th P.M.

STATE OF MINNESOTA, County of YELLOW MEDICINE

At the corner location shown on the sketch:

- On _____ found a _____
DATE
- left monument as found, lowered monument, removed monument (explain)
- On 3-11-94 Placed a 3/4" IRON ROD WITH PLASTIC CAP, UP 1.0'
DATE

SKETCH OF REFERENCE TIES



NOTE:
MONUMENT IS
ON N-S FENCE
31' NORTH OF NORTH EDGE OF SWAMP

1983 YELLOW MEDICINE CO. COORDINATE SYSTEM NORTHEAST CORNER N = 153420.198 E = 640437.430	REF MONUMENT N = 153564.132 E = 640437.026
---	--

BEARING IS IN COUNTY ORIENTATION

Statement of evidence relative to this corner location is on back of page.

SNA01027.00.00.01
J.B.M. MARCC '94

I hereby certify that this document and the data contained herein was prepared by me or under my direct supervision.

Lowell R. Pommeroy 4-22-94
SIGNATURE DATE

Registration No. 17005
 Land Surveyor, Professional Engineer
 County Surveyor, County Engineer

OFFICE OF THE COUNTY RECORDER
County of Yellow Medicine

I hereby certify that this document was filed in the Co. recorders office at 9:40 A.M. on the 22 day of June A.D., 1994

County Recorder Normand Oudall
By _____, Deputy
DOCUMENT NO. 206997

Northeast Corner Section 13, Township 114 North, Range 38 West

The DNR Bureau of Engineering contacted the following offices for information on this corner:

MN. Secretary of State
Yellow Medicine County Recorder and Highway Engineer
Redwood County Recorder and Highway Engineer

- 1857 The U.S. General Land Office field notes in the Secretary of State's Office describe this corner as a set post from which a:
Br. Oak 12 in. diam. bears N 1° W 262 lks.
Br. Oak 8 in. diam. bears N 7° E 297 lks.
Aspen 8 in. diam. bears S 8° W _____
Aspen 8 in. diam. bears S 17° E 163 lks.
- 1897 Surveyor's Record Book, on page 139, on file in the Yellow Medicine County Recorder's Office contains a survey by John Norgaard, County Surveyor. Survey does not describe this corner, but it is shown to measure:
2648 ft. from the east quarter corner Section 12
- 1901 Surveyor's Record Book B, on page 135, on file in the Yellow Medicine County Recorder's Office, contains a collection of what was found at government section corners by John Norgaard, County Surveyor, in a re-monumentation survey. Norgaard states: "Found stake as correspond with the stump of the Govt B.T. Br. Oak 12" N 1° W 262 links, other B.T. gone." Set a 6" by 6" by 24" jasper granite stone at this location, top of monument 5" above ground.
- 1926 Surveyor's Record Book, on page 495, on file in the Yellow Medicine County Recorder's Office contains a survey by John Norgaard, County Surveyor. Survey does not describe this corner, but it is shown to measure:
2676 ft. from the north quarter corner Section 13
2693 ft. from the east quarter corner Section 13
5352 ft. from the northeast corner Section 14
- 1993 The DNR Bureau of Engineering conducted a search for this corner and found the corner area to be under 6 to 10 feet of water. This area is in a granite quarry, prone to seasonal flooding, making the corner search difficult. Did not find the government bearing trees or any type of corner monument. Computed a position for this corner based on the Norgaard's 1926 survey and found it to measure:
2716.87 ft. from the east quarter corner Section 13
5347.88 ft. from the northeast corner Section 14
5269.33 ft. from the northeast corner Section 12

Analysis of the available information led the DNR Bureau of Engineering to conclude that the position computed per the 1926 survey marks the location of the corner.