

CERTIFICATE OF LOCATION OF GOVERNMENT CORNER

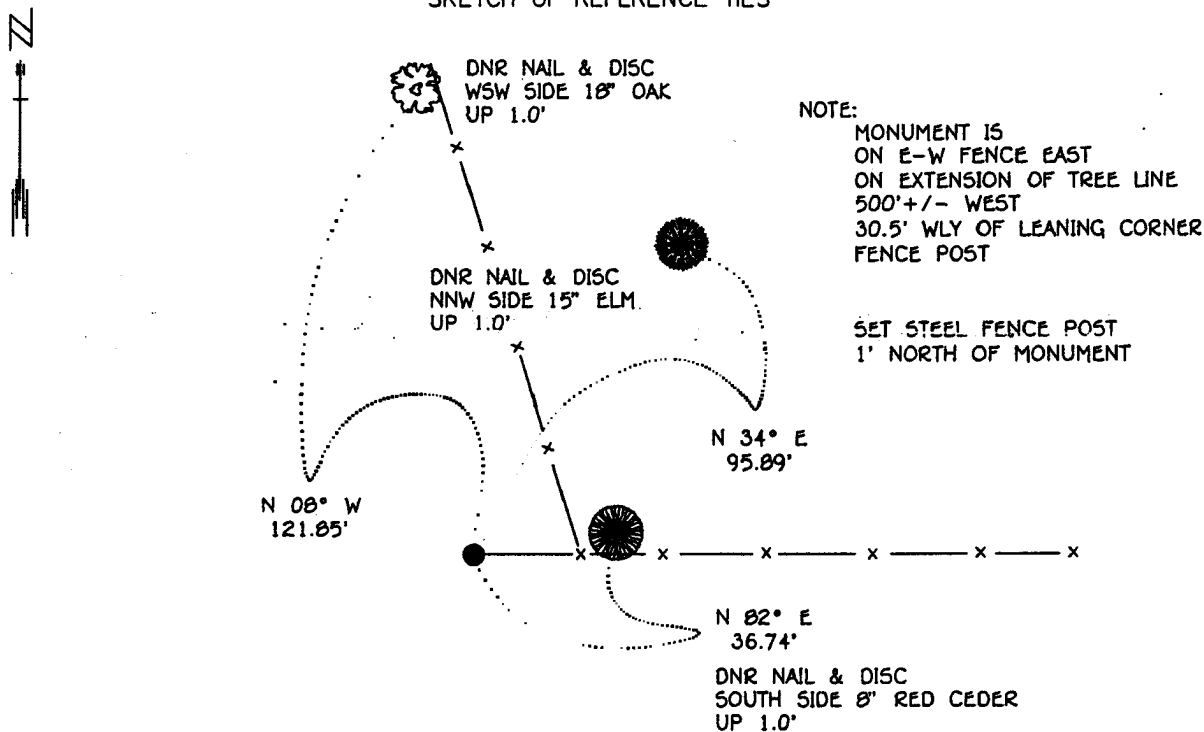
NORTH QUARTER Corner of Section 13, Township 114 N, Range 30 W, 5th P.M.

STATE OF MINNESOTA, County of YELLOW MEDICINE

At the corner location shown on the sketch:

- On _____ found a _____
DATE
- left monument as found, lowered monument, removed monument (explain)
- On 1-27-94 Placed a 3/4" x 24" REBAR WITH ALUMINUM CAP STAMPED
DATE "DNR SURVEY MARKER", UP 0.20'

SKETCH OF REFERENCE TIES



1983 YELLOW MEDICINE CO.
COORDINATE SYSTEM
N = 153459.676
E = 637763.779

BEARINGS OBSERVED WITH COMPASS

Statement of evidence relative to this corner location is on back of page.

SNA01027.00.00.01
J.B.M. MAR '94

I hereby certify that this document and the data contained herein was prepared by me or under my direct supervision.

Lowell R. Pannarone 4-22-94
SIGNATURE DATE

Registration No. 17005

- Land Surveyor, Professional Engineer
 County Surveyor, County Engineer

OFFICE OF THE COUNTY RECORDER

County of Yellow Medicine

I hereby certify that this document was filed in the Co. recorders office at 9:45 A.M. on the 22 day of June A.D., 1994

County Recorder Ronald Quade

By _____, Deputy

DOCUMENT NO. 206998

North Quarter Corner Section 13, Township 114 North, Range 38 West

The DNR Bureau of Engineering contacted the following offices for information on this corner:
MN. Secretary of State
Yellow Medicine County Recorder and Highway Engineer

1864 The U.S. General Land Office field notes in the Secretary of State's Office describe this corner as a post in mound with pits.

1926 Surveyor's Record Book, on page 495, on file in the Yellow Medicine County Recorder's Office contains a survey by John Norgaard, County Surveyor. Survey does not describe this corner, but it is shown to measure:

2676 ft. from the northeast corner Section 13

2676 ft. from the northwest corner Section 13

1993 The DNR Bureau of Engineering conducted a search for this corner and located a east-west fence line near the corner area. A corner fence post on this east-west fence and a fence line running northwest was found to measure:

2704.72 ft. from the northwest corner section 13

A check on the total mile distance of the north line of Section 13 was found to be 5347.88 compared to the 1926 distance of 5352. A position for this corner was computed per the 1926 survey and was found to be:

2673.94 ft. from adjoining section corners

4.73 ft. south of the east-west fence.

As the fence is old and marks a well defined line it was concluded to establish the position for this corner per the 1926 survey, and on the east-west fence line. It is believed that the fence was built to the 1926 survey. The corner fence post for the fence to the northwest appears to be for convenience only.