

CERTIFICATE OF LOCATION OF GOVERNMENT CORNER

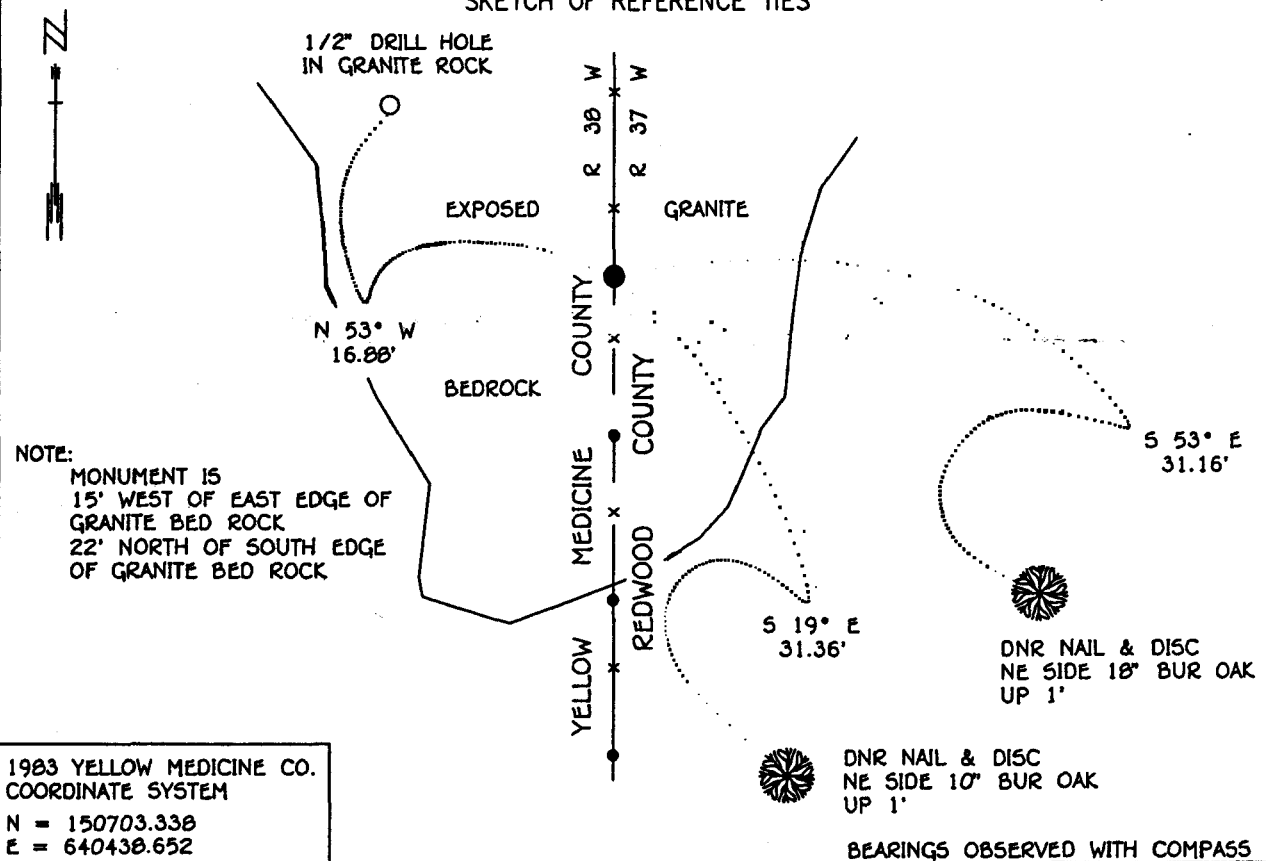
EAST QUARTER Corner of Section 13 ,Township 114 N ,Range 38 W , 5th P.M.

STATE OF MINNESOTA, County of YELLOW MEDICINE

At the corner location shown on the sketch:

- On 1-25-94 found a 7/8" OUTSIDE DIAMETER IRON PIPE WITH A 1 1/2" x 2" STEEL TUBE OVER IT
DATE IMBEDEDDED IN EXPOSED GRANITE ROCK
- left monument as found, lowered monument, removed monument (explain)
- On _____ Placed a _____
DATE _____

SKETCH OF REFERENCE TIES



Statement of evidence relative to this corner location is on back of page.

SNA01027.00.00.01
J.B.M. FEB '94

I hereby certify that this document and the data contained herein was prepared by me or under my direct supervision.

Lowell R. Panneman 4-22-94
SIGNATURE DATE

Registration No. 17005

- Land Surveyor, Professional Engineer
- County Surveyor, County Engineer

OFFICE OF THE COUNTY RECORDER
County of Yellow Medicine

I hereby certify that this document was filed in the Co. recorders office at 9:50 A.M. on the 22 day of June A.D., 1994

County Recorder Normand Gravelle
By _____, Deputy

DOCUMENT NO. 206999

East Quarter Corner Section 13, Township 114 North, Range 38 West

The DNR Bureau of Engineering contacted the following offices for information on this corner:

**MN. Secretary of State
Yellow Medicine County Recorder and Highway Engineer
Redwood County Recorder and Highway Engineer**

- 1857** The U.S. General Land Office field notes in the Secretary of State's Office describe this corner as a set post from which a:
 Br. Oak 12 in. diam. bears S 2° W 200 lks.
 Br. Oak 6 in. diam. bears S 23 1/2° E 262 lks.
- 1901** Surveyor's Record Book B, on file in the Yellow Medicine County Recorder' Office, contains a collection of what was found at government section corners by John Norgaard, County Surveyor, in a re-monumentation survey. Quarter corner were not set in this survey, however the plat of this survey, on page 27 of this record book, shows this corner measures:
 2654 ft. from the northeast corner Section 24
- 1926** Surveyor's Record Book, on page 495, on file in the Yellow Medicine County Recorder's Office contains a survey by John Norgaard, County Surveyor. Survey does not describe this corner, but it is shown to measure:
 2693 ft. from the northeast corner Section 13
 2652 ft. from the northeast corner Section 24
- 1993** The DNR Bureau of Engineering conducted a search for this corner and found a 7/8" iron rod with steel tube over it, used as a end steel fence post on a north-south fence. The iron rod is imbedded in exposed granite bedrock. Searched for but did not find the government bearing trees. The iron rod marks a change in fence material, wood posts to the north, steel posts to the south. The iron rod was found to measure:
 2675.51 ft. from the northeast corner Section 24
 2716.87 ft. from the northeast corner Section 13

Analysis of the available information led the DNR Bureau of Engineering to conclude that the iron rod on the north-south fence line marks the location of the corner.