

CERTIFICATE OF LOCATION OF GOVERNMENT CORNER

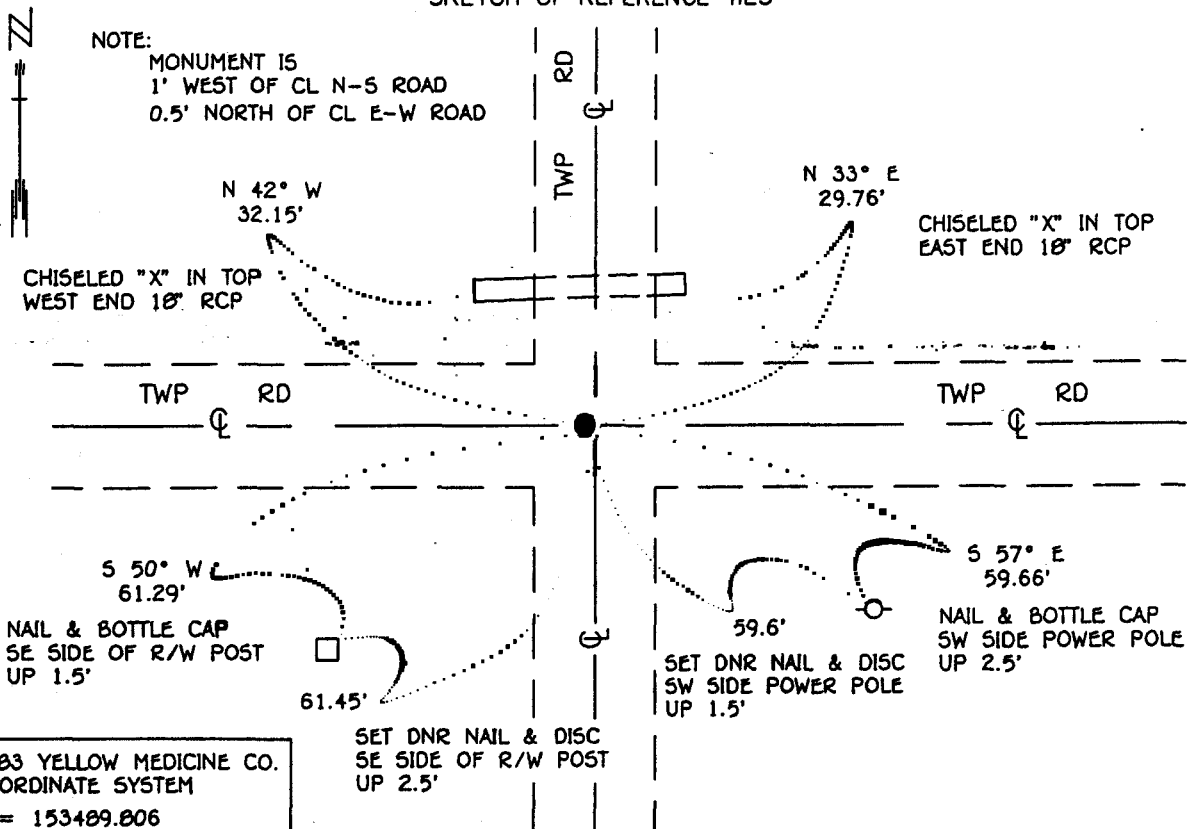
NORTHEAST Corner of Section 14, Township 114 N, Range 38 W, 5th P.M.

STATE OF MINNESOTA, County of YELLOW MEDICINE

At the corner location shown on the sketch:

- On 7-19-93 found a 60d SPIKE, DOWN 0.5', OVER A 6" x 6" CUT STONE
DATE DOWN 38"
- left monument as found, lowered monument, removed monument (explain)
- On 7-19-93 Placed a 3/4" x 24" REBAR WITH ALUMINUM CAP STAMPED
DATE "DNR SURVEY MARKER", OVER STONE, DOWN 0.2'

SKETCH OF REFERENCE TIES



BEARINGS OBSERVED WITH COMPASS

Statement of evidence relative to this corner location is on back of page.

SNA01027.00.00.01
J.B.M. FEB '94

I hereby certify that this document and the data contained herein was prepared by me or under my direct supervision.

Lowell R. Pommeroy 4-22-94
SIGNATURE DATE

Registration No. 17005

- Land Surveyor, Professional Engineer
- County Surveyor, County Engineer

OFFICE OF THE COUNTY RECORDER

County of Yellow Medicine

I hereby certify that this document was filed in the Co. recorders office at 9:55 A. .M. on the 22 day of June A.D., 1994

County Recorder D. Marshall

By _____, Deputy

DOCUMENT NO. 207000

Northeast Corner Section 14, Township 114 North, Range 38 West

**The DNR Bureau of Engineering contacted the following offices for information on this corner:
MN. Secretary of State
Yellow Medicine County Recorder and Highway Engineer**

- 1864** The U.S. General Land Office field notes in the Secretary of State's Office describe this corner as a post in mound with pits.
- 1901** Surveyor's Record Book B, on page 139, on file in the Yellow Medicine County Recorder's Office, contains a collection of what was found at government section corners by John Norgaard, County Surveyor, in a re-monumentation survey. Norgaard states: "Found stone at the intersection of roads set by me 6 years ago in the government mound. Set top of monument level with ground." Set a 6" by 6" by 24" jasper granite stone at this location.
- 1926** Surveyor's Record Book, on page 495, on file in the Yellow Medicine County Recorder's Office contains a survey by John Norgaard, County Surveyor. Survey does not describe this corner, but it is shown to measure:
2676 ft. from the north quarter corner Section 13
- 1966** Section corner tie book, on file in the County Highway Engineer's Office, shows six reference ties to this corner. A note is made that the monument at the corner is 30" deep.
- 1967** Transit & Topog field book C.P. 67-a1, on file in the County Highway Engineer's Office, describes the corner as such: "Located 6"x 6"x 2' granite monument 30" below surface. Placed bolt 1" below surface & tied as shown". Three reference ties are shown to this corner. This information is also shown on the alignment map for this project. Here the corner is labeled as a spike. From stationing this corner measures:
5331.8 ft. from the northeast corner Section 23
- 1993** July 19, the DNR Bureau of Engineering conducted a search for this corner and located ties of record. At the cross of these ties, dug a 2 ft. by 2 ft. hole to a depth of 38" and found a 6" by 6" cut granite stone. Placed a DNR Survey Marker over the stone.

Analysis of the available information led the DNR Bureau of Engineering to conclude that the found stone marks the location of the corner.