

CERTIFICATE OF LOCATION OF GOVERNMENT CORNER

EAST QUARTER Corner of Section 14, Township 114 N, Range 38 W, 5th P.M.

STATE OF MINNESOTA, County of YELLOW MEDICINE

At the corner location shown on the sketch:

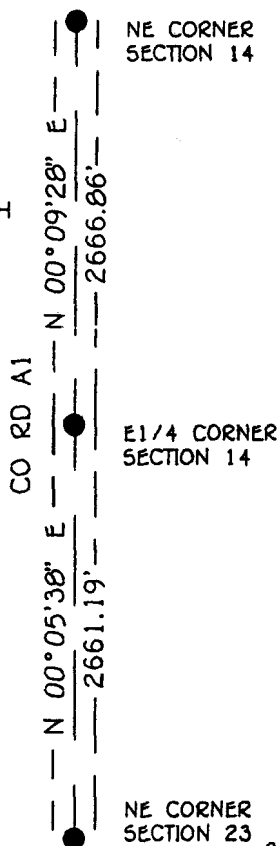
- On _____ found a _____
DATE
- left monument as found, lowered monument, removed monument (explain)
- On 2-14-94 Placed a 3/4" x 12" REBAR WITH ALUMINUM CAP STAMPED
DATE "DNR SURVEY MARKER"

SKETCH OF REFERENCE TIES



NOTE:
 MONUMENT IS
 ON CL OF N-5 ROAD
 IN LINE WITH FIELD DIVISION EAST
 IN LINE WITH TREE LINE WEST
 282' SOUTH OF CL E-W CO. DITCH

GOOD TIES NOT AVAILABLE



1983 YELLOW MEDICINE CO.
 COORDINATE SYSTEM
 N = 150822.957
 E = 635082.656

BEARINGS ARE IN COUNTY ORIENTATION

Statement of evidence relative to this corner location is on back of page.

SNAD1027.00.00.01
 J.B.M. FEB '94

I hereby certify that this document and the data contained herein was prepared by me or under my direct supervision.

Lowell R. Rommerson 4-22-94
 SIGNATURE DATE

Registration No. 17005

- Land Surveyor, Professional Engineer
 County Surveyor, County Engineer

OFFICE OF THE COUNTY RECORDER
 County of Yellow Medicine

I hereby certify that this document was filed in the Co. recorders office at 10:00 A.M. on the 22 day of June A.D., 1994

County Recorder Norman J. Coudelle
 By _____, Deputy

DOCUMENT NO. 207001

East Quarter Corner Section 14, Township 114 North, Range 38 West

**The DNR Bureau of Engineering contacted the following offices for information on this corner:
MN. Secretary of State
Yellow Medicine County Recorder and Highway Engineer**

- 1864 The U.S. General Land Office field notes in the Secretary of State's Office describe this corner as a post in mound with pits.**
- 1926 Surveyor's Record Book, on page 495, on file in the Yellow Medicine County Recorder's Office contains a survey by John Norgaard, County Surveyor. Survey does not describe this corner, but it is shown to measure:
2645 ft. from the northeast corner Section 23**
- 1993 July 21, the DNR Bureau of Engineering conducted a search for this corner and located the intersection of a north-south road and occupation lines east and west. The area of the corner is in a cut section of road. This intersection of occupation was found to measure:
2661.19 ft. from the northeast corner Section 23
2666.86 ft. from the northeast corner Section 14**

Analysis of the available information led the DNR Bureau of Engineering to conclude that the intersection of the north-south road and occupation lines east and west marks the location of the corner. As this is a cut section of road, any evidence of a monument would probably have been destroyed.