

# CERTIFICATE OF LOCATION OF GOVERNMENT CORNER

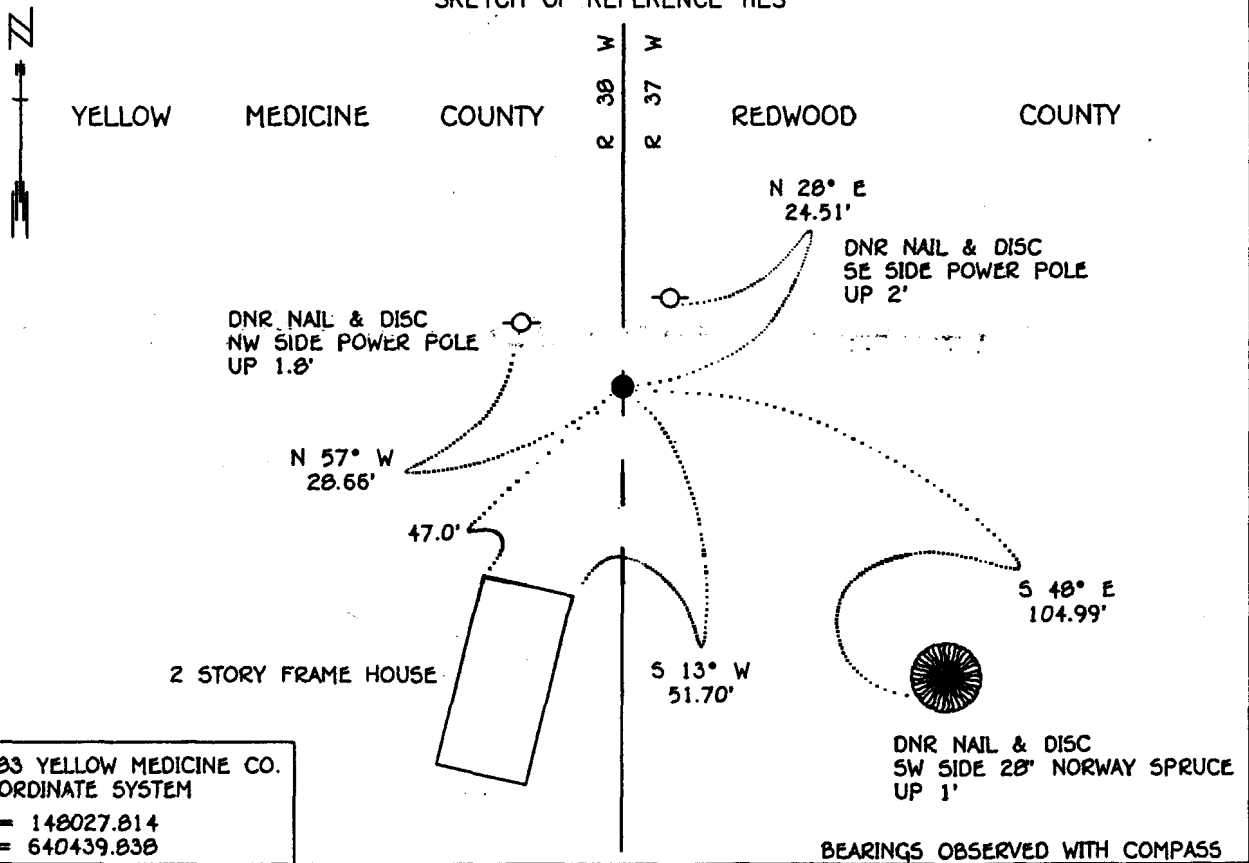
NORTHEAST Corner of Section 24, Township 114 N, Range 38 W, 5<sup>th</sup> P.M.

STATE OF MINNESOTA, County of YELLOW MEDICINE

At the corner location shown on the sketch:

- On \_\_\_\_\_ found a \_\_\_\_\_  
DATE
- left monument as found,       lowered monument,       removed monument (explain)
- On 1-25-94 Placed a 3/4" x 24" REBAR WITH ALUMINUM CAP STAMPED  
DATE "DNR SURVEY MARKER", DOWN 0.20'

### SKETCH OF REFERENCE TIES



Statement of evidence relative to this corner location is on back of page.

SNA01027.00.00.01  
J.B.M. FEB '94

I hereby certify that this document and the data contained herein was prepared by me or under my direct supervision.

Lowell R. Pomeroy 4-22-94  
SIGNATURE DATE

Registration No. 17005

- Land Surveyor;       Professional Engineer
- County Surveyor,       County Engineer

OFFICE OF THE COUNTY RECORDER  
County of Yellow Medicine

I hereby certify that this document was filed in the Co. recorders office at 10:05 A.M. on the 22 day of June A.D., 1994

County Recorder Normand Audette

By \_\_\_\_\_, Deputy

DOCUMENT NO. 207002

**Northeast Corner Section 24, Township 114 North, Range 38 West**

**The DNR Bureau of Engineering contacted the following offices for information on this corner:**

**MN. Secretary of State**

**Yellow Medicine County Recorder and Highway Engineer**

**Redwood County Recorder and Highway Engineer**

**1857 The U.S. General Land Office field notes in the Secretary of State's Office describe this corner as a set post, built mound of earth and dug trench per instructions.**

**1901 Surveyor's Record Book B, on page 135, on file in the Yellow Medicine County Recorder's Office, contains a collection of what was found at government section corners by John Norgaard, County Surveyor, in a re-monumentation survey. Norgaard states: "Found stake located by me 5 years ago on line and at equal proportional distance between the East 1/4 post Section 13 and the Southeast corner Section 24. Set top of monument level with ground." Set a 6" by 6" by 24" jasper granite stone at this location. A plat of this survey shows this corner measures:**

**2654 ft. from the east quarter corner Section 13**

**5308 ft. from the southeast corner Section 24**

**1926 Surveyor's Record Book, on page 495, on file in the Yellow Medicine County Recorder's Office contains a survey by John Norgaard, County Surveyor. Survey does not describe this corner, but it is shown to measure:**

**SE corner house 51.7 ft, NW corner house 47.0 ft.**

**2652 ft. from the east quarter corner Section 13**

**2703 ft. from the north quarter corner Section 24**

**1993 July, the DNR Bureau of Engineering conducted a search for this corner, but found no evidence of a monument. Located a two story frame house near the corner area, which according to the residents, is fairly old. Used the ties from the 1926 survey to search for a monument, but did not find anything. Set a point for the corner based on the 1926 ties of record, however this position did not agree with Norgaard's distances to adjoining government corners. On an assumption that the distance from the southeast corner was supposed to be from the northeast corner, a point for the corner was set at this position, (using the northwest and northeast corners of the house.) this position yielded distances of:**

**5306.05 ft. from the southeast corner Section 24**

**2710.83 ft. from the north quarter corner Section 24**

**2675.51 ft. from the east quarter corner Section 13**

**Analysis of the available information led the DNR Bureau of Engineering to conclude that the position established from the 1926 tie distances from the northwest and northeast corners of the house marks the location of the corner. This position is at a best fit location of Norgaard's distances to adjoining corners.**