

CERTIFICATE OF LOCATION OF GOVERNMENT CORNER

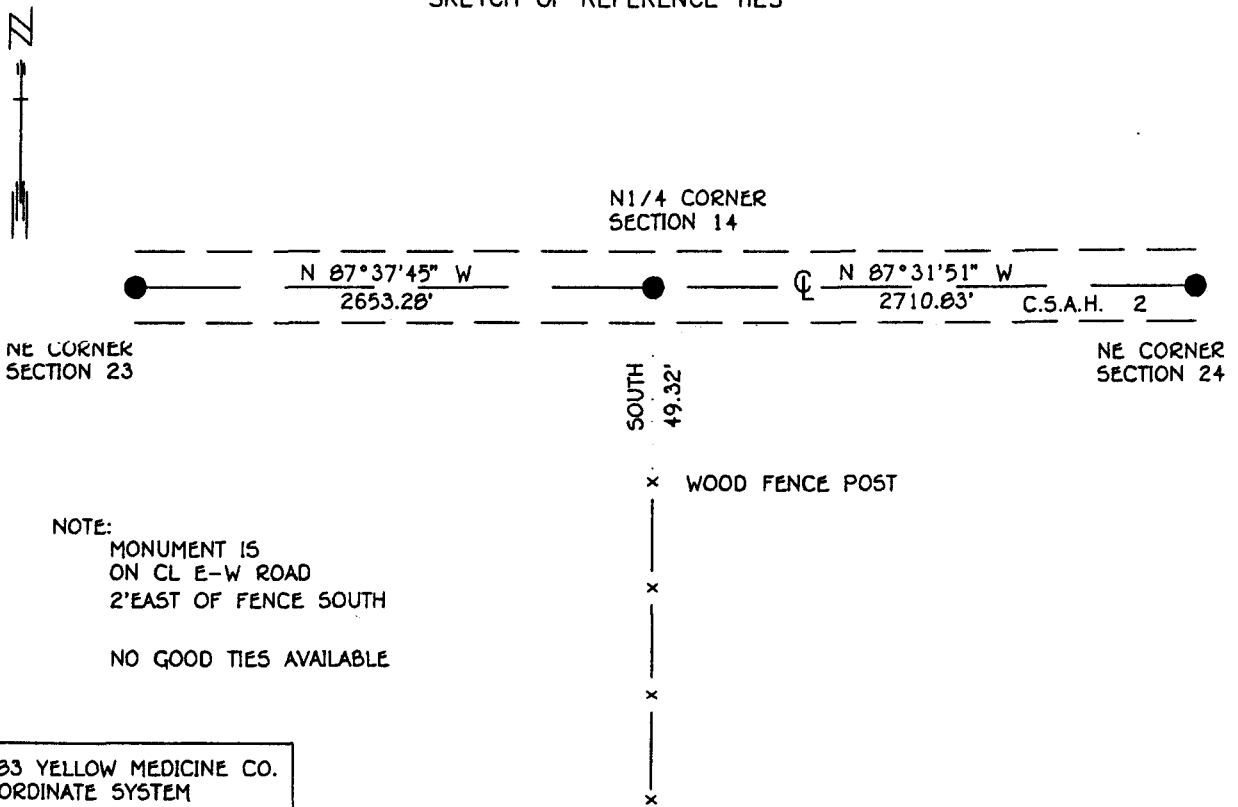
NORTH QUARTER Corner of Section 24, Township 114 N, Range 38 W, 5th P.M.

STATE OF MINNESOTA, County of YELLOW MEDICINE

At the corner location shown on the sketch:

- On _____ found a _____
DATE _____
- left monument as found, lowered monument, removed monument (explain)
- On 2-14-94 Placed a 3/4" x 12" REBAR WITH ALUMINUM CAP STAMPED
DATE "DNR SURVEY MARKER", FLUSH

SKETCH OF REFERENCE TIES



NOTE:
MONUMENT IS
ON CL E-W ROAD
2' EAST OF FENCE SOUTH

NO GOOD TIES AVAILABLE

1983 YELLOW MEDICINE CO.
COORDINATE SYSTEM
N = 148144.597
E = 637731.526

BEARINGS OBSERVED WITH COMPASS

Statement of evidence relative to this corner location is on back of page.

SNA01027.00.00.01
J.B.M. FEB '94

I hereby certify that this document and the data contained herein was prepared by me or under my direct supervision.

Lowell R. Pomeroy 4-22-94
SIGNATURE DATE

Registration No. 17005

- Land Surveyor, Professional Engineer
 County Surveyor, County Engineer

OFFICE OF THE COUNTY RECORDER
County of Yellow Medicine

I hereby certify that this document was filed in the Co. recorders office at 10:10 A.M. on the 22 day of June A.D., 1994

County Recorder Anna S. Gustafson
By _____, Deputy
DOCUMENT NO. 207003

North Quarter Corner Section 24, Township 114 North, Range 38 West

**The DNR Bureau of Engineering contacted the following offices for information on this corner:
MN. Secretary of State
Yellow Medicine County Recorder and Highway Engineer**

- 1864** The U.S. General Land Office field notes in the Secretary of State's Office describe this corner as a post in mound with pits.
- 1926** Surveyor's Record Book, on page 495, on file in the Yellow Medicine County Recorder's Office contains a survey by John Norgaard, County Surveyor. Survey describes this corner as a stone set by Norgaard 20 years ago. The corner measures:
2 ft east of a fence line south
27.5 ft. north of telephone line
2648 ft. from the northeast corner Section 23
2703 ft. from the northeast corner Section 24
- 1960** The alignment map for County State Aid Highway #2, on file in the County Highway Engineer's Office, show a 1" by 2" hub set at a assumed position for this corner. Corner is shown at the projected intersection of roads west and north and fence line south. From highway stationing this corner is shown to measure:
2676.4 ft. from the northeast corner Section 23
- 1993** July, the DNR Bureau of Engineering conducted a search for this corner and located the intersection of an east-west road and fence line south. Per the 1926 survey set a point for the corner 2 ft. east of the fence line and measured:
1326.64 ft. to a fence line north
2653.28 ft. from the northeast corner Section 23
2710.83 ft. from the northeast corner Section 24

Analysis of the available information led the DNR Bureau of Engineering to conclude that the point set per the 1926 survey marks the location of the corner. Construction of County State Aid Highway #2 has destroyed any evidence of a corner monument.