

# CERTIFICATE OF LOCATION OF GOVERNMENT CORNER

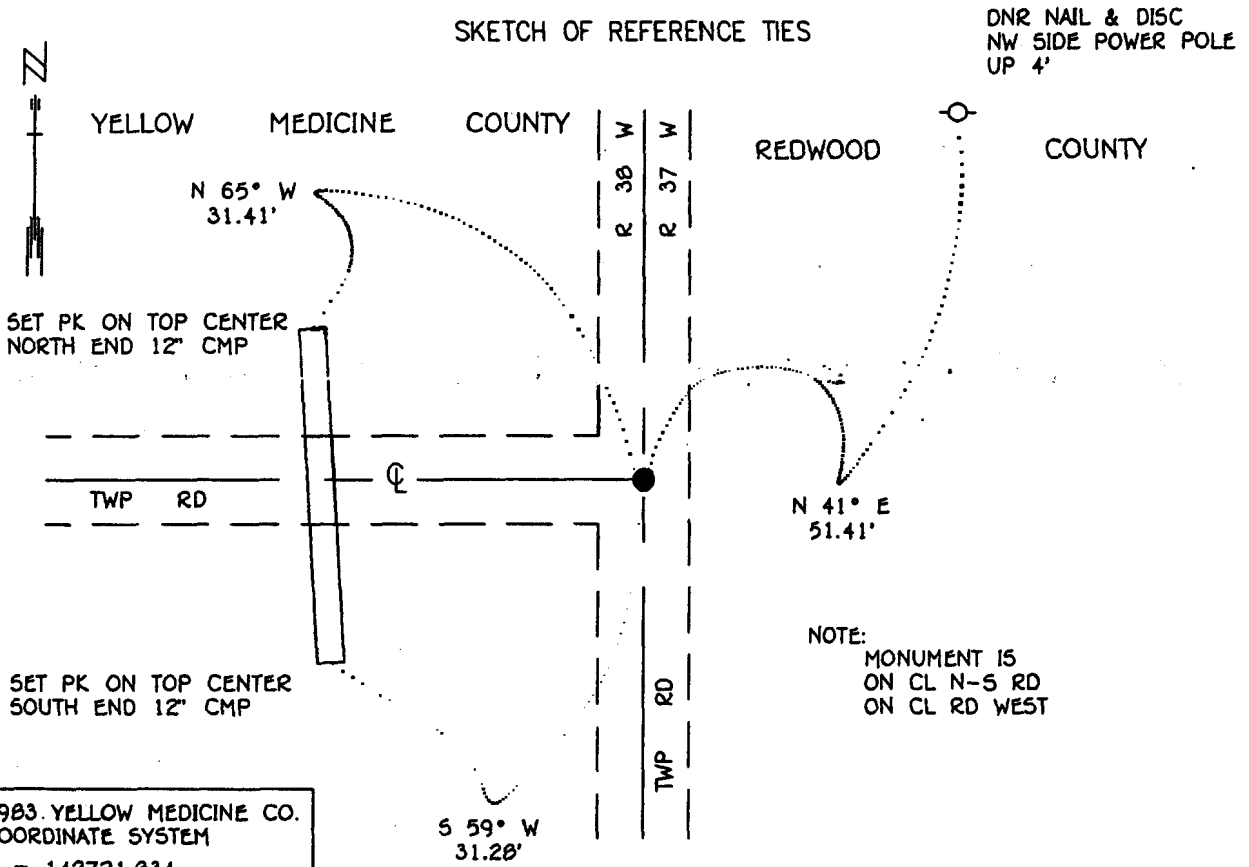
NORTHEAST Corner of Section 25, Township 114 N, Range 38 W, 5<sup>th</sup> P.M.

STATE OF MINNESOTA, County of YELLOW MEDICINE

At the corner location shown on the sketch:

- On 7-19-93 found a IRREGULAR 6" x 8" x 1.5" STONE, DOWN 1.5"  
DATE
- left monument as found,  lowered monument,  removed monument (explain)
- On 7-19-93 Placed a 3/4" x 6" IRON ROD OVER STONE, DOWN 0.3'  
DATE

### SKETCH OF REFERENCE TIES



1983 YELLOW MEDICINE CO.  
COORDINATE SYSTEM  
N = 142721.834  
E = 640413.243

BEARINGS OBSERVED WITH COMPASS

Statement of evidence relative to this corner location is on back of page.

SNA01027.00.00.01  
J.B.M. FEB '94

I hereby certify that this document and the data contained herein was prepared by me or under my direct supervision.

Lowell R. Pomeroy 4-22-94  
SIGNATURE DATE

- Registration No. 17005
- Land Surveyor,  Professional Engineer
  - County Surveyor,  County Engineer

OFFICE OF THE COUNTY RECORDER  
County of Yellow Medicine

I hereby certify that this document was filed in the Co. recorders office at 10:15 A.M. on the 22 day of June A.D., 1994

County Recorder Ronald J. ...  
By \_\_\_\_\_, Deputy

DOCUMENT NO. 207004

**Northeast Corner Section 25, Township 114 North, Range 38 West**

**The DNR Bureau of Engineering contacted the following offices for information on this corner:**

**MN. Secretary of State  
Redwood County Recorder and Highway Engineer  
Yellow Medicine County Recorder and Highway Engineer**

- 1857** The U.S. General Land Office field notes in the Secretary of State's Office describe this corner as a post in mound with pits.
- 1901** Surveyor's Record Book B, on page 135, on file in the Yellow Medicine County Recorder' Office, contains a collection of what was found at government section corners by John Norgaard, County Surveyor, in a re-monumentation survey. Norgaard states: "Found stone set by me 5 years ago in the government mound. Set top of monument level with ground." Set a 6" by 6" by 24" jasper granite stone at this location. A plat of this survey shows this corner measures:  
5306 ft. from the northeast corner Section 26  
5308 ft. from the northeast corner Section 24
- 1993** July 19, the DNR Bureau of Engineering conducted a search for this corner and found a 6" by 8" by 18" stone, down 1.5 ft. Removed and probed under said stone in all directions, but found nothing further. Reset stone in same location now down 1.0 Ft. Stone was found to measure:  
5306.05 ft. from the northeast corner Section 24  
5325.40 ft. from the northeast corner Section 26  
at the intersection of roads north-south and east

**Analysis of the available information led the DNR Bureau of Engineering to conclude that the found stone marks the location of the corner.**