

CERTIFICATE OF LOCATION OF GOVERNMENT CORNER

NORTHEAST Corner of Section 26, Township 114 N, Range 38 W, 5th P.M.

STATE OF MINNESOTA, County of YELLOW MEDICINE

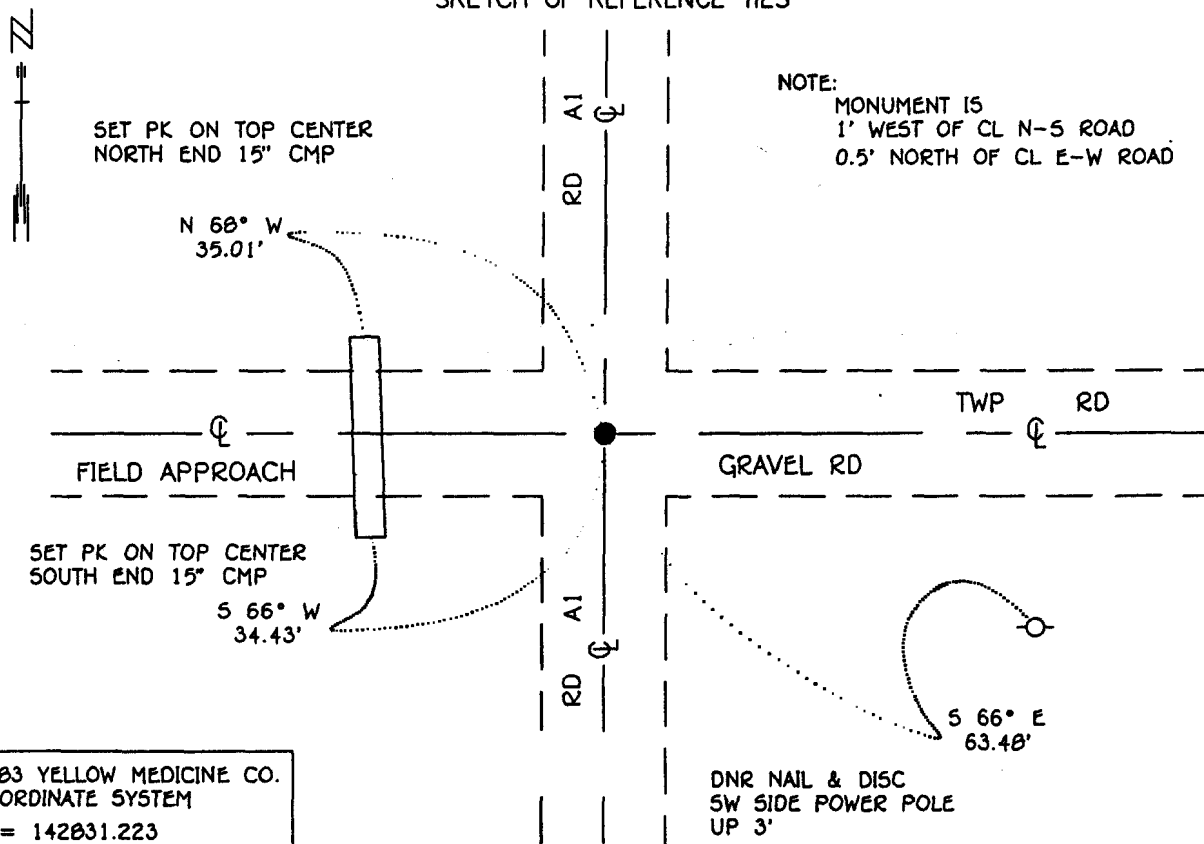
At the corner location shown on the sketch:

On 7-21-93 found a 6" x 6" CUT STONE, DOWN 1.4'
DATE

left monument as found, lowered monument, removed monument (explain)

On 7-21-93 Placed a 3/4" x 12" IRON ROD WITH ALUMINUM CAP STAMPED
DATE "DNR SURVEY MARKER", OVER STONE, DOWN 0.3'

SKETCH OF REFERENCE TIES



1983 YELLOW MEDICINE CO.
COORDINATE SYSTEM
N = 142831.223
E = 635088.967

BEARINGS OBSERVED WITH COMPASS

Statement of evidence relative to this corner location is on back of page.

SNAD1027.00.00.01
J.B.M. FEB '94

I hereby certify that this document and the data contained herein was prepared by me or under my direct supervision

Lowell B. Pommeroy 4-22-94
SIGNATURE DATE

Registration No. 17005

- Land Surveyor, Professional Engineer
- County Surveyor, County Engineer

OFFICE OF THE COUNTY RECORDER
County of Yellow Medicine

I hereby certify that this document was filed in the Co. recorders office at 10:20 A.M. on the 22 day of June A.D., 1994

County Recorder Armand Odell
By _____, Deputy
DOCUMENT NO. 207005

Northeast Corner Section 26, Township 114 North, Range 38 West

The DNR Bureau of Engineering contacted the following offices for information on this corner:

MN. Secretary of State

Yellow Medicine County Recorder and Highway Engineer

1864 The U.S. General Land Office field notes in the Secretary of State's Office describe this corner as a post in mound with pits.

**1901 Surveyor's Record Book B, on page 141, on file in the Yellow Medicine County Recorder' Office, contains a collection of what was found at government section corners by John Norgaard, County Surveyor, in a re-monumentation survey. Norgaard states: "Found stone at the intersection of road as used by me 5 years ago in the subdivision of adjoining sections. Set top of monument level with ground." Set a 6" by 6" by 24" jasper granite stone at this location. A plat of this survey shows this corner measures:
5306 ft. from the northeast corner Section 25
5338 ft. from the northeast corner Section 23**

**1993 July 21, the DNR Bureau of Engineering conducted a search for this corner at the intersection of roads north-south and east-west. Found a nail down 0.2 ft. over a 6" carriage bolt, down 0.8 ft. Both were over a 6" by 6" cut granite stone down 1.4 ft. Set a DNR Survey Marker over the stone which was found to measure:
5325.40 ft. from the northeast corner Section 25
5330.55 ft. from the northeast corner Section 23**

Analysis of the available information led the DNR Bureau of Engineering to conclude that the found stone marks the location of the corner.