

CERTIFICATE OF LOCATION OF GOVERNMENT CORNER

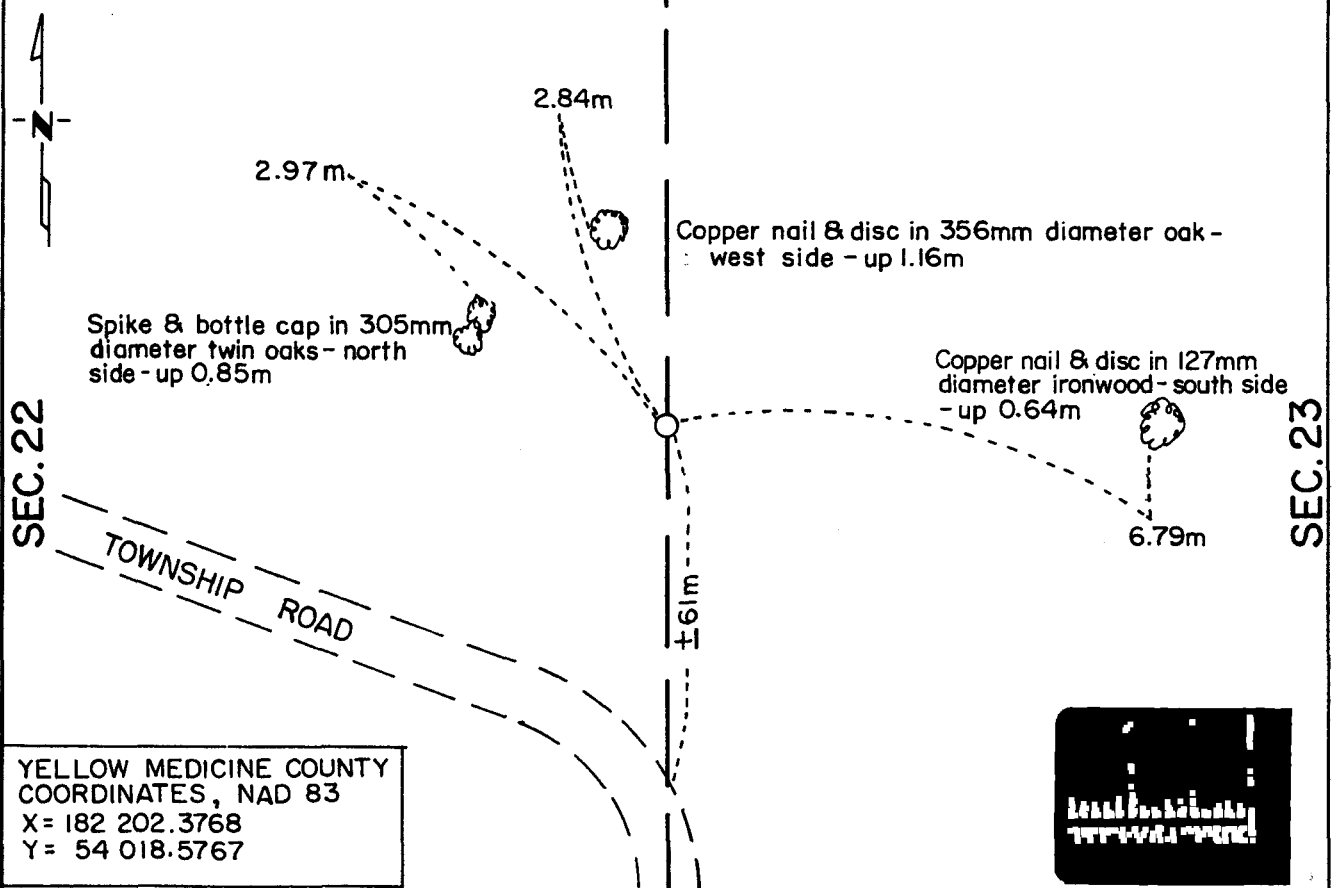
East Quarter Corner of Section 22, Township 115 N, Range 39 W, 5th P.M.

STATE OF MINNESOTA, County of Yellow Medicine

At the corner location shown on the sketch:

- On May 9, 1994 found a 32mm diameter iron pipe projecting above ground 305mm
DATE
- left monument as found, lowered monument, removed monument (explain)
- On _____ placed a _____
DATE

SKETCH OF REFERENCE TIES



Statement of evidence relative to this corner location is on back of page.

I hereby certify that this document and the data contained herein was prepared by me or under my direct supervision.

Robert Jones 6-7-94
SIGNATURE DATE

Registration No. 11864

- Land Surveyor, Professional Engineer
- County Surveyor, County Engineer

OFFICE OF THE COUNTY RECORDER
 County of Yellow Medicine

I hereby certify that this document was filed in the Co. Recorders office at 10:25 A .M. on the 22 day of June A.D., 19 94

County Recorder Norman J. Casch
 By _____, Deputy

DOCUMENT NO. 207006

Statement of Evidence:

East Quarter Corner Section 22, T 115 N, R 39 W

- 1864 - The original Public Land Survey was completed by Charles E. Davis and James Watson Webb, Jr. A wood post was set to mark the corner with reference to two bearing trees.
- 1892 - Jonah Peterman, Yellow Medicine County Surveyor, "found" (probably the wood post). Survey Book A, page 60
- 1988 - Duane Bonnema, Registered Land Surveyor, found a 1 1/4" diameter iron pipe about in line with the north/south portion of a township road to the south.
- 1994 - Matt Schlagel, Land Surveyor in Training with Mn/DOT, recovered the 32mm diameter iron pipe as located by Bonnema in 1988.

The iron pipe is accepted as the corner location because of the lack of any better evidence. It is not known who set the pipe nor when it was set. It is 4.67m south and 2.37m west of the lost location.

For additional information, contact the Mn/DOT Surveys Section at Willmar, Mn 56201.