

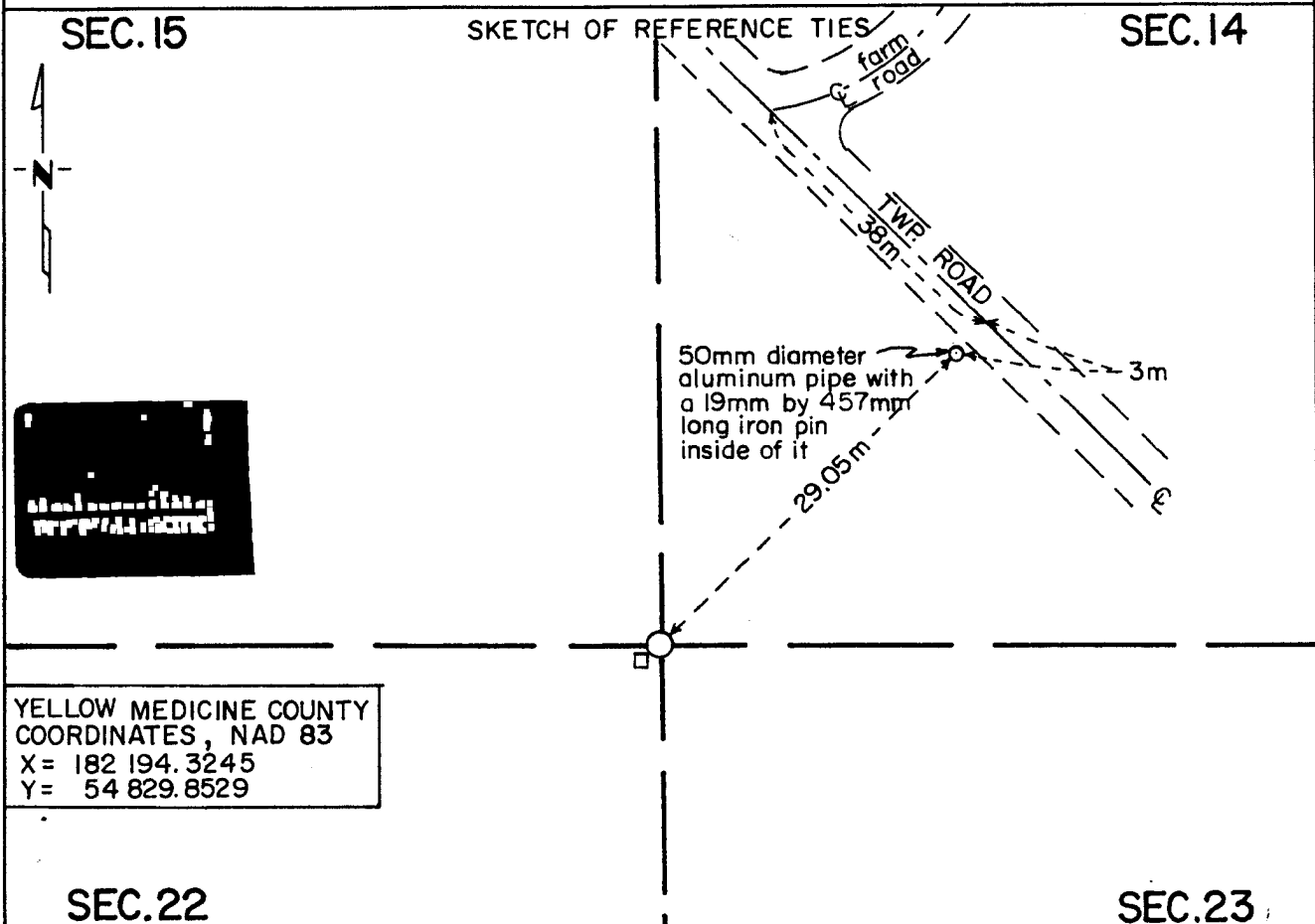
CERTIFICATE OF LOCATION OF GOVERNMENT CORNER

Northeast Corner of Section 22, Township 115 N, Range 39 W, 5th P.M.

STATE OF MINNESOTA, County of Yellow Medicine

At the corner location shown on the sketch:

- On May 1994 found a 64mm diameter aluminum B.L.M. monument with a
DATE
178mm square granite monument on the southwest side of it
- left monument as found, lowered monument, removed monument (explain)
- On _____ placed a _____
DATE



YELLOW MEDICINE COUNTY
 COORDINATES, NAD 83
 X= 182 194.3245
 Y= 54 829.8529

Statement of evidence relative to this corner location is on back of page.

I hereby certify that this document and the data contained herein was prepared by me or under my direct supervision.

Robert Gaus

SIGNATURE

6-6-94

DATE

Registration No. 11864

Land Surveyor, Professional Engineer

County Surveyor, County Engineer

OFFICE OF THE COUNTY RECORDER
 County of Yellow Medicine

I hereby certify that this document was filed in the Co. Recorders office at 10:30 A.M. on the 22 day of June A.D., 19 94

County Recorder Harold Oudall

By _____, Deputy

DOCUMENT NO. 207007

Statement of Evidence:

Northeast Corner Section 22, T 115 N, R 39 W

For the complete history prior to 1994, see Document No. 192968, which is a Certificate of Location of Government Corner filed in the Yellow Medicine County Recorder's Office on April 20, 1988 by Lowell Pommerening, RLS 17005, who works for the Minnesota Department of Natural Resources.

1994 - Matt Schlagel, Land Surveyor in Training with Mn/DOT, recovered the B.L.M. aluminum monument with a 178mm square granite monument on the southwest side of it. The B.L.M. reference tie was also recovered. The reference tie has been slightly damaged and tilted. It is a 50mm diameter aluminum pipe with a 19mm diameter by 457mm long iron pin inside of it. The reference tie is now 29.05m northeast of the section corner instead of 145 links (29.17m), as called for in the B.L.M. survey notes.

This position for the corner has been accepted in the past by the old County Surveyors, Mn/DOT, the B.L.M., and Mn/DNR.

For additional information, contact the Mn/DOT Surveys Section at Willmar, Mn 56201.