

CERTIFICATE OF LOCATION OF GOVERNMENT CORNER

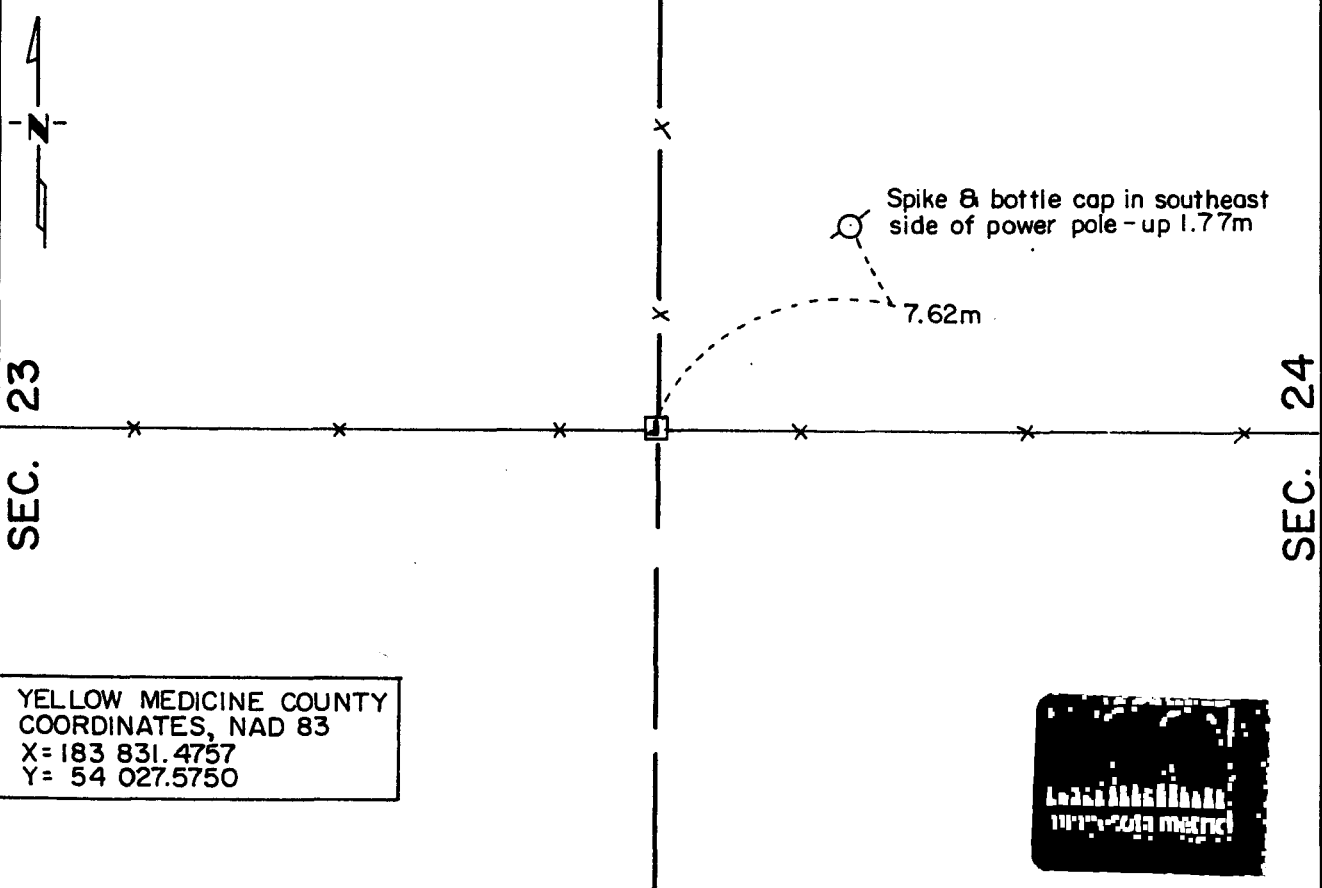
East Quarter _____ Corner of Section 23, Township 115 N, Range 39 W, 5th P.M.

STATE OF MINNESOTA, County of Yellow Medicine

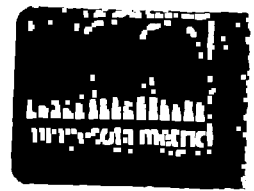
At the corner location shown on the sketch:

- On May 9, 1994 found a large angle iron, serving as a fence corner, set in a 305mm
DATE square concrete pad
- left monument as found, lowered monument, removed monument (explain)
- On May 9, 1994 ~~placed~~ attached a yellow DO NOT DISTURB NEARBY SURVEY
DATE MARKER sign to the angle iron

SKETCH OF REFERENCE TIES



YELLOW MEDICINE COUNTY
 COORDINATES, NAD 83
 X= 183 831.4757
 Y= 54 027.5750



Statement of evidence relative to this corner location is on back of page.

I hereby certify that this document and the data contained herein was prepared by me or under my direct supervision.

Robert Jones
SIGNATURE

6-7-94
DATE

Registration No. 11864

Land Surveyor, Professional Engineer

County Surveyor, County Engineer

OFFICE OF THE COUNTY RECORDER
 County of Yellow Medicine

I hereby certify that this document was filed in the Co. Recorders office at 10:35 A .M. on the 22 day of June A.D., 19 94

County Recorder Norman A. Opdahl

By _____, Deputy

DOCUMENT NO. 207008

Statement of Evidence:

East Quarter Corner Section 23, T 115 N, R 39 W

- 1864 - The original Public Land Survey was completed by Charles E. Davis and James Watson Webb, Jr. A wood post was set in a dirt mound to mark the corner. Pits were dug as per instructions.
- 1874 - O. Quam, Yellow Medicine County Surveyor, "found post". Survey Book A, page 10
- 1892 - Johah Peterman, Yellow Medicine County Surveyor, "found" (probably the wood post). Survey Book A, page 60
- 1988 - Duane Bonnema, Registered Land Surveyor, found a large angle iron set in a 1 foot square concrete pad at a fence corner. There was a wooden lath attached to the angle iron. The landowner claims he set the fence corner at the quarter corner position as determined by Byron Dahle, Registered Land Surveyor. The fences run north, east, and west from the corner.
- 1994 - Matt Schlagel, Land Surveyor in Training with Mn/DOT, found the large angle iron serving as a fence corner as described by Bonnema in 1988. A yellow "DO NOT DISTURB NEARBY SURVEY MARKER" sign was attached to the angle iron.

The angle iron is accepted as the corner location for lack of any better evidence. It is 3.96m north and 0.85m west of the lost location.

For additional information, contact the Mn/DOT Surveys Section in Willmar, Mn 56201.