

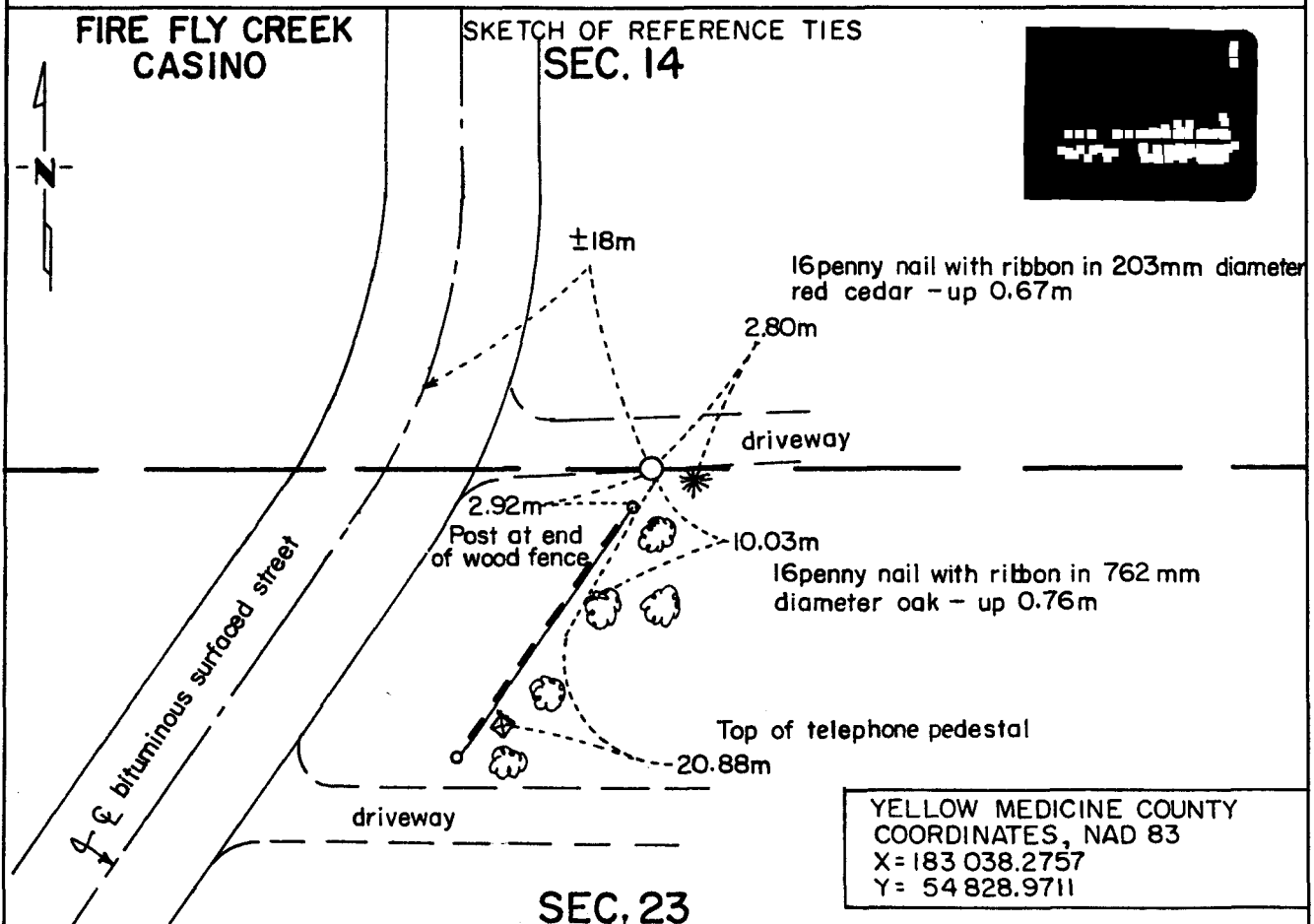
# CERTIFICATE OF LOCATION OF GOVERNMENT CORNER

North Quarter Corner of Section 23, Township 115 N, Range 39 W, 5 th P.M.

STATE OF MINNESOTA, County of Yellow Medicine

At the corner location shown on the sketch:

- On Feb.15, 1994 found a 64mm diameter aluminum B.L.M. monument (magnetic)  
DATE about 40mm below ground surface
- left monument as found,  lowered monument,  removed monument (explain)
- On \_\_\_\_\_ placed a \_\_\_\_\_  
DATE



Statement of evidence relative to this corner location is on back of page.

I hereby certify that this document and the data contained herein was prepared by me or under my direct supervision.

Robert C. Jans 6-8-94  
SIGNATURE DATE

Registration No. 11864

- Land Surveyor,  Professional Engineer
- County Surveyor,  County Engineer

OFFICE OF THE COUNTY RECORDER

County of Yellow Medicine

I hereby certify that this document was filed in the Co. Recorders office at 10:40 A .M. on the 22 day of June A.D., 19 94

County Recorder Damon S. Opdale

By \_\_\_\_\_, Deputy

DOCUMENT NO. 207009

Statement of Evidence:

North Quarter Corner Section 23, T 115 N, R 39 W

- 1864 - The original Public Land Survey was completed by Charles E. Davis and James Watson Webb, Jr. A wood post was set to mark the corner. Reference was made to two bearing trees.
- 1892 - Jonah Peterman, Yellow Medicine County Surveyor, found the stumps of the witness trees. Survey Book A, page 60 He also states that he found the quarter post 42.04 chains east of the N.W. corner. Survey Book A, page 85
- 1913 - John Norgaard, Yellow Medicine County Surveyor, used a fence corner which was said to be the quarter corner about 14 years ago. Survey Book A, page 292
- 1979 - Stephen D. Douglas, Cadastral Surveyor with BLM survey group no. 126 found no remaining evidence of the original corner. Any later monumentation has been destroyed by construction at the Indian settlement. Set the corner by proportioning the distances shown in the county records. Set a 2 1/2" diameter by 30" long aluminum post 29" into the ground with cap marked:

T 115 N R 39 W  
1/4 S 14  
S 23

It was referenced to two bearing trees.

- 1988 - Duane Bonnema, Registered Land Surveyor, recovered the BLM aluminum monument and set additional reference ties.
- 1994 - Matt Schlagel, Land Surveyor in Training with Mn/DOT, recovered the BLM aluminum monument and set additional reference ties.

The aluminum monument is accepted as the corner location basically because it was set by a cadastral surveyor working for the U.S. Department of Interior, Bureau of Land Management. Their survey notes are on file in the Minnesota Secretary of State's office.

For additional information, contact the Mn/DOT Surveys Section in Willmar, Mn 56201.