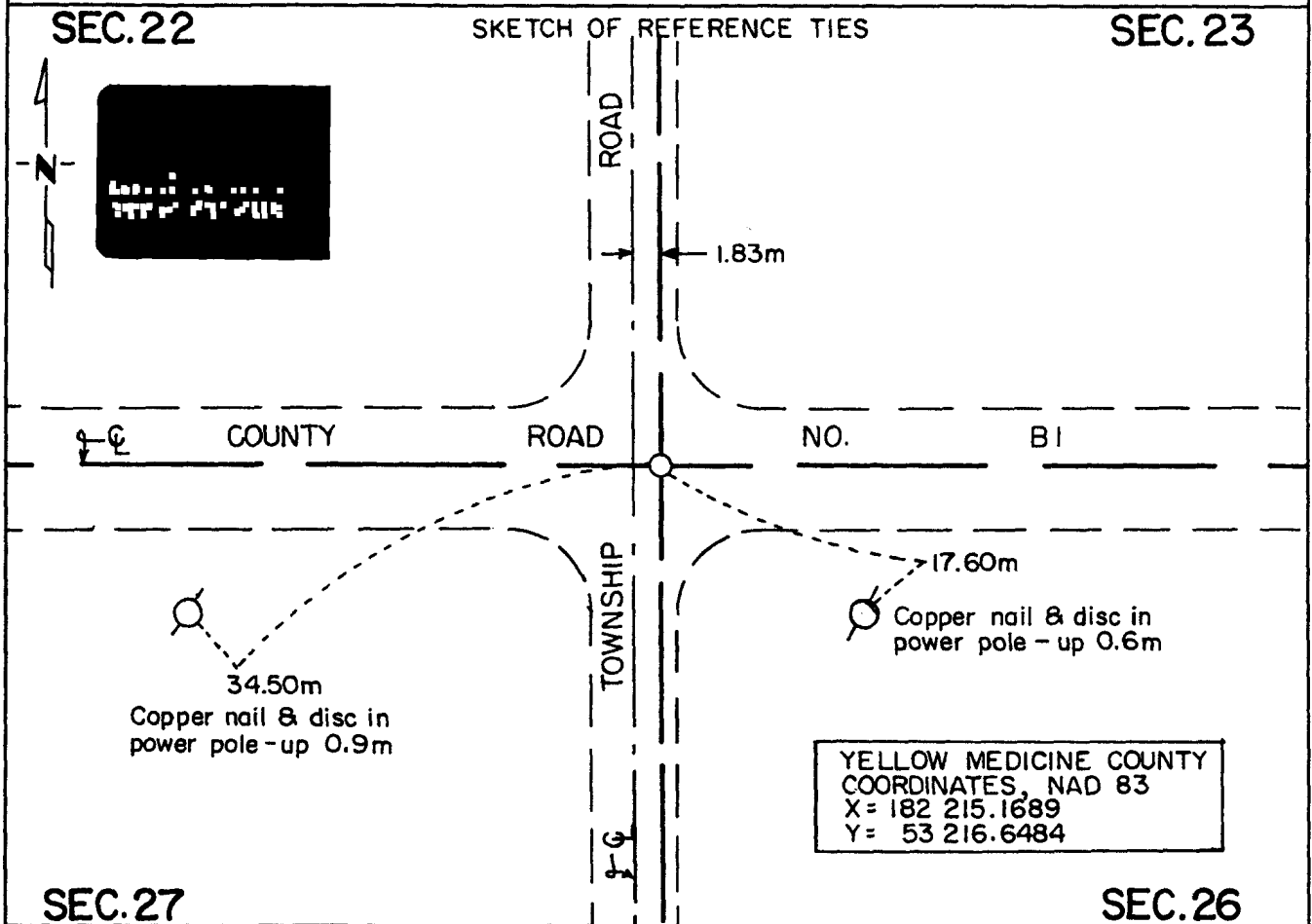


CERTIFICATE OF LOCATION OF GOVERNMENT CORNER

Northeast Corner of Section 27, Township 115 N, Range 39 W, 5th P.M.
STATE OF MINNESOTA, County of Yellow Medicine

At the corner location shown on the sketch:

- On Feb. 11, 1994 found a 19mm diameter iron pipe about 270mm below road surface
DATE
- left monument as found, lowered monument, removed monument (explain)
- On _____ placed a _____
DATE



Statement of evidence relative to this corner location is on back of page.

I hereby certify that this document and the data contained herein was prepared by me or under my direct supervision.

Robert Jones SIGNATURE 6-7-94 DATE

Registration No. 1864

- Land Surveyor, Professional Engineer
- County Surveyor, County Engineer

OFFICE OF THE COUNTY RECORDER

County of Yellow Medicine

I hereby certify that this document was filed in the Co. Recorders office at 10:50 A .M. on the 22 day of June A.D., 19 94

County Recorder Norman J. Anderson

By _____, Deputy

DOCUMENT NO. 207011

Statement of Evidence:

Northeast Corner Section 27, T 115 N, R 39 W

- 1864 - The original Public Land Survey was completed by Charles E. Davis and James Watson Webb, Jr. A wood post was set in a dirt mound to mark the corner. Pits were dug as per instructions.
- 1892 - Jonah Peterman, Yellow Medicine County Surveyor, found original government corner. Survey Book A, page 59
- 1901 - John Norgaard, Yellow Medicine County Surveyor, found stone at the intersection of roads, which was set by Peterman in the government mound. Set top of 6" square jasper stone monument level with the ground. Survey Book 3, page 77
- 1983 - Byron Dahle, Registered Land Surveyor, found a 6" square by 36" long stone at the intersection of roads. Set a 3/4" diameter iron pin over it.
- 1988 - Duane Bonnema, Registered Land Surveyor, found a 3/4" diameter iron pin 0.30' below the road surface. It was located 2' south of the centerline of County Road B1 running east/west and 3' east of the centerline of a north/south township road.
- 1992 - A Yellow Medicine County Highway Department survey crew found a monument with an "RLS" cap on it about 2" below the surface of County Road No. B1. It was located at County Road No. B1 P.I. station 53+46.46. It was shown to be near the intersection of the centerline of a north/south township road with the centerline of the county road.
- 1994 - Matt Schlagel, Land Surveyor in Training with Mn/DOT, found a 19mm diameter iron pipe about 270mm below the road surface. It was located on the centerline of County Road No. B1 east/west and about 1.83m east of the centerline of a north/south township road.

The iron pipe is accepted as the corner location because there is a continuous chain of evidence indicating that it perpetuates the location of the original government corner.

For additional information, contact the Mn/DOT Surveys Section at Willmar, Mn 56201.