

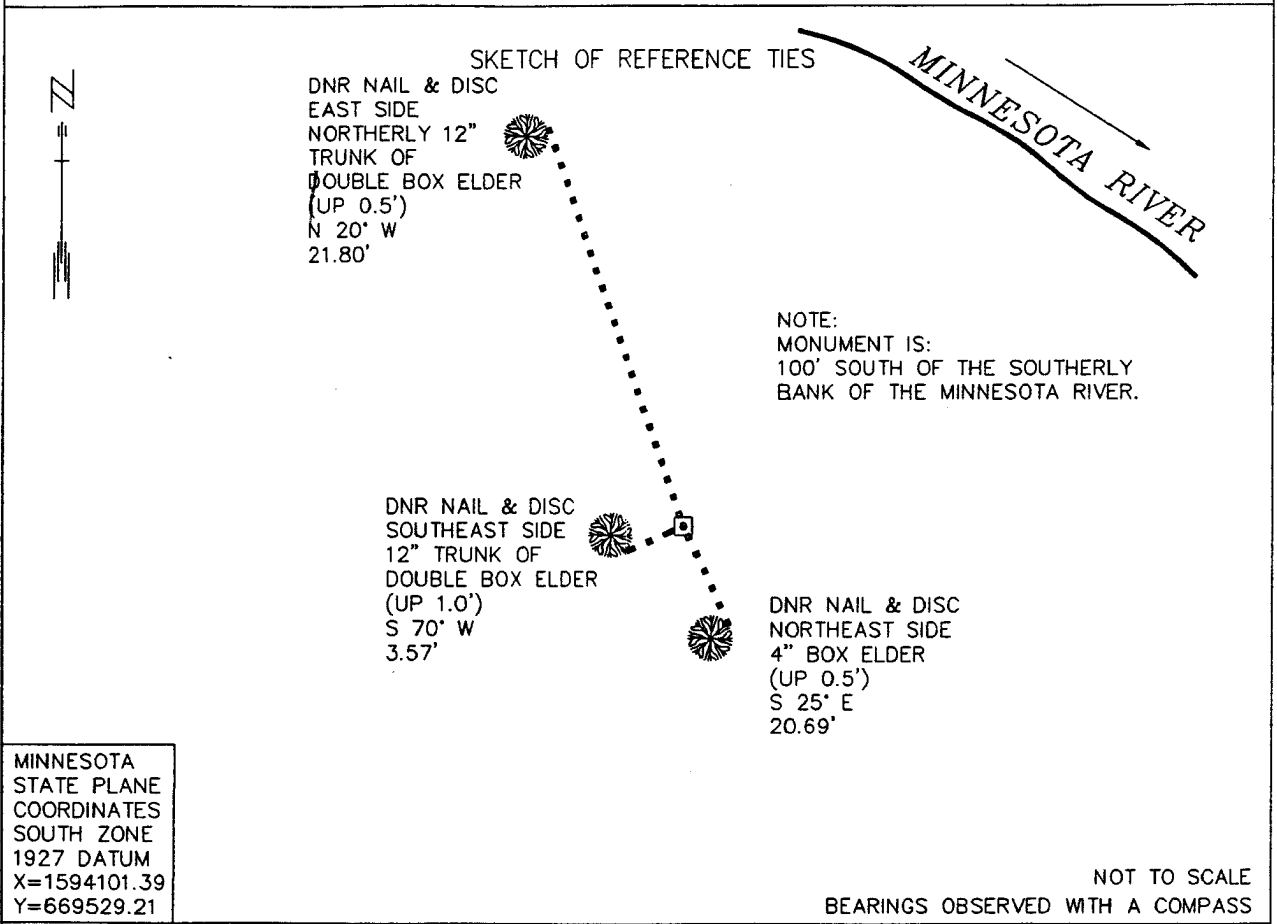
CERTIFICATE OF LOCATION OF GOVERNMENT CORNER

#5 MEANDER Corner of Section 29, Township 116 N, Range 39 W, 5th P.M.

STATE OF MINNESOTA, County of YELLOW MEDICINE

At the corner location shown on the sketch:

- On _____ found a _____
DATE
- left monument as found, lowered monument, removed monument (explain)
- On 10/28/93 Placed a 3/4" x 24" REBAR WITH ALUMINUM CAP STAMPED: "DNR SURVEY MARKER"
DATE
FLUSH WITH GROUND. SET A STEEL FENCE POST 0.5' EAST OF MONUMENT.



Statement of evidence relative to this corner location is on back of page. DATE 01/04/93
FILE COW00624

I hereby certify that this document and the data contained herein was prepared by me or under my direct supervision.

Bruce W. Sheppard 1/10/94
SIGNATURE DATE

Registration No. 17003

Land Surveyor, Professional Engineer
 County Surveyor, County Engineer

OFFICE OF THE COUNTY RECORDER
County of Yellow Medicine

I hereby certify that this document was filed in the Co. recorders office at 8:15 A.M. on the 25 day of July A.D., 1994

County Recorder Norman J. Grotche
By _____, Deputy
DOCUMENT NO. 207218

Meander Corner Number 5 of Section 29, Township 116 North, Range 39 West, Page 1 of 2

The DNR Bureau of Engineering contacted the following for survey information:

Minnesota Secretary of State's Office
Yellow Medicine County Recorder's Office
Yellow Medicine County Highway Engineer's Office
Montevideo City Engineer's Office
K.B. MacKichan and Associates, Inc. of Redwood Falls
Bonnema Surveys of Willmar
West Central Land Services, Inc. of Willmar

- 1865 U.S General Land Office notes obtained from the Secretary of State's Office show corner marked a wood post in a mound with pits as per instructions. The corner is shown:
36.78 chains(2427.48') from the northeast corner of Section 32
- 1891 June, L.R. Moyer's Field Book 7, page 32, obtained from the Montevideo City Engineer's Office shows a 24" by 16" by 5" stone at corner but does not indicate if found or set. The corner is shown:
2425.5 feet from the northeast corner of Section 32
1105.5 feet from a 12" by 10" by 8" stone at the east sixteenth corner of the southeast quarter of Section 29
- 1892 June, L.R. Moyer's Field Book 7, page 24, obtained from the Montevideo City Engineer's Office shows a symbol for a monument at corner but does not indicate what was found or set. The corner is shown:
2425.5 feet from the northeast corner of Section 32
1105.5 feet from a post that is on the east line of Section 29
- 1898 AUDITOR'S SUBDIVISION NO. 1 as surveyed by John Norgaard, County Surveyor, obtained from the County Recorder's Office shows corner but does not indicate what was found or set. The corner is shown:
2427.5 feet from the northeast corner of Section 32
- 1913 June, page 294 of a Surveyor's Record Book obtained from the County Recorder's Office contains a survey, by John Norgaard, County Surveyor. Survey does not show corner but a point on the east line of Section 29 and on the center line of a road is shown:
2070 feet from the northeast corner of Section 32
- 1933 February, page 352 of a Surveyor's Record Book obtained from the County Recorder's Office contains a survey, by John Norgaard, County Surveyor. Survey shows the east line of Section 29 but no information is given about the Meander Corner.

Meander Corner Number 5 of Section 29, Township 116 North, Range 39 West, Page 2 of 2

No A Certificate of Survey for land in Sections 29 and 32 obtained from West Central Land
Date Services, Inc. shows that an iron monument was found on the east line of Section 29, 505.17
feet from the southeast corner.

Survey also shows that a plastic capped iron pipe was set on the northerly extension of a line from the southeast corner of Section 29 thur the found monument 505.17 feet north. The iron pipe is shown:

1570.36 feet from the southeast corner of Section 29
on the center line of a northwest-southeast Township Road
in line with a fence south

No information is given about the meander corner.

1993 October, DNR Bureau of Engineering visited the area of the corner and searched for but found no occupation lines.

Also, visited the area of the east sixteenth corner of the southeast quarter of Section 29 and found numerous boulders that have been placed by quarry operations, therefore did NOT search for record stone.

Searched for and found the record iron pipe on the center line of a road and on the east line of Section 29. The iron pipe was found to be:

2075.83 feet from the northeast corner of Section 32

Computed a position for the meander corner as follows:

- A) on the northerly extension of a line from the northeast corner of Section 32 thru the found iron pipe on the center line of road
- B) 2427.48 feet (GLO distance) from the northeast corner of Section 32

Conducted a field search for the record stone at the computed position for the meander corner as follows:

probed an 8 foot east-west by 10 feet north-south area to a depth of 2 to 3 feet - no stones were found

Analysis of the above information led the DNR Bureau of Engineering to conclude that the computed position using the northeast corner of Section 32 and a found iron pipe on the center of road and on the east line of Section 29 marks the location of the corner. Set a DNR Survey Marker to mark the location of the corner.