

CERTIFICATE OF LOCATION OF GOVERNMENT CORNER

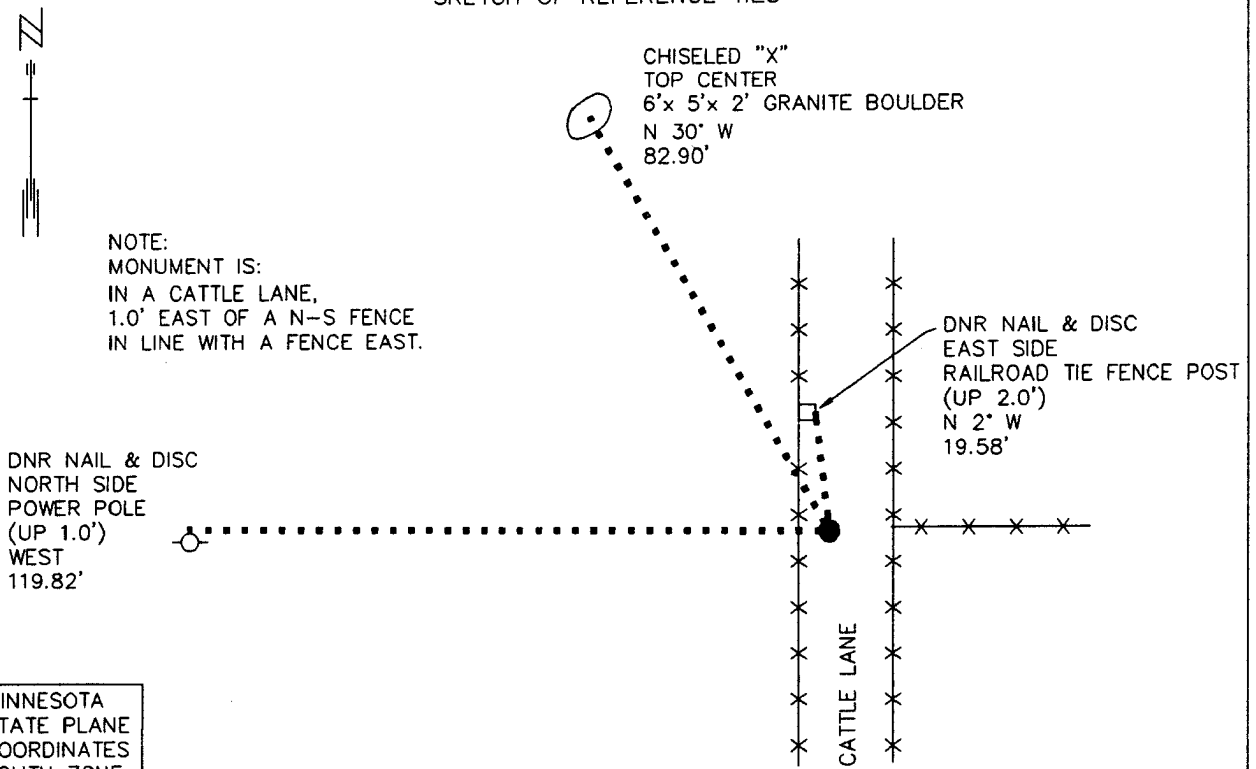
NORTH QUARTER Corner of Section 32, Township 116 N, Range 39 W, 5th P.M.

STATE OF MINNESOTA, County of YELLOW MEDICINE

At the corner location shown on the sketch:

- On 10/28/93 found a 1/2" I.D. IRON PIPE (DOWN 0.4') WITH A STEEL FENCE POST 0.1' NORTH
DATE
- left monument as found, lowered monument, removed monument (explain)
- On _____ Placed a _____
DATE

SKETCH OF REFERENCE TIES



MINNESOTA
STATE PLANE
COORDINATES
SOUTH ZONE
1927 DATUM
X=1591391.50
Y=667095.39

NOT TO SCALE
BEARINGS OBSERVED WITH A COMPASS

Statement of evidence relative to this corner location is on back of page.

DATE 01/04/93
FILE COW00624

I hereby certify that this document and the data contained herein was prepared by me or under my direct supervision.

Bruce W. Sheppard 1/10/94
SIGNATURE DATE

Registration No. 17003

- Land Surveyor, Professional Engineer
- County Surveyor, County Engineer

OFFICE OF THE COUNTY RECORDER

County of Yellow Medicine

I hereby certify that this document was filed in the Co. recorders office at 8:25 A.M. on the 25 day of July A.D., 1994

County Recorder Norman A. Godeke
By _____, Deputy

DOCUMENT NO. 207220

The DNR Bureau of Engineering contacted the following for survey information:

Minnesota Secretary of State's Office
Yellow Medicine County Recorder's Office
Yellow Medicine County Highway Engineer's Office
Montevideo City Engineer's Office
K.B. MacKichan and Associates, Inc. of Redwood Falls
Bonnema Surveys of Willmar
West Central Land Services, Inc. of Willmar

- 1865 U.S General Land Office notes obtained from the Secretary of State's Office show corner marked a wood post in a mound with pits as per instructions.
- 1891 June, L.R. Moyer's Field Book 7, page 32, obtained from the Montevideo City Engineer's Office shows corner but does not indicate what was found or set. The corner is shown:
2656.5 feet from the northeast corner of Section 32
1328.25 feet from the north sixteenth corner of the northeast quarter of Section 32
- 1892 June, page 62 of a Surveyor's Record Book obtained from the County Recorder's Office contains a survey, surveyor not indicated. Survey shows corner but does not indicate what was found or set. The corner is shown:
40.20 chains(2653.20') from the northeast corner of Section 32
20.10 chains(1326.60') from the north sixteenth corner of the northeast quarter of Section 32
- 1893 June, L.R. Moyer's Field Book 7, page 118, obtained from the Montevideo City Engineer's Office shows a post pit and mound at corner but does not indicate if found or set. The corner is shown:
40.26 chains(2657.16') from the northeast corner of Section 32
20.13 chains(1328.58') from the north sixteenth corner of the northeast quarter of Section 32
- 1900 Surveyor's Record Book B contains John Norgaard's, County Surveyor, remonumentation notes for section corners in Yellow Medicine County. Page 53 states that the north quarter corner of Section 32 was used to reestablish the northeast corner of Section 31. A description of what was found or set at the quarter corner is not given.
- 1912 November, page 277 of a Surveyor's Record Book obtained from the County Recorder's Office contains a survey, by John Norgaard, County Surveyor. Norgaard states that he found a stake and stone at corner which he set several years.

North Quarter Corner of Section 32, Township 116 North, Range 39 West, Page 2 of 2

1915 Page 352 of a Surveyor's Record Book obtained from the County Recorder's Office contains a survey, by John Norgaard, County Surveyor. Survey states that a stone in a government mound was found at corner. The corner is shown:

2642 feet from the center of Section 29

No A Certificate of Survey for land in Sections 29 and 32 obtained from West Central Land
Date Services, Inc. shows that an iron monument was found at corner. The corner is shown:

2653.20 feet from the northeast corner of Section 32

1326.60 feet from an iron monument found at the north sixteenth corner of the northeast quarter of Section 32

2646.45 feet from an iron monument found at the center of Section 29
in line with fences north, south and east

1993 October, DNR Bureau of Engineering found a 1/2 inch diameter pipe at corner. Searched for but did not find the record stone - area is covered with numerous sized stones. The iron pipe was found to be:

1 foot east of a north-south fence

in line with a fence east

1326.39 feet from an iron pipe found at the north sixteenth corner of the northeast quarter of Section 32

Analysis of the above information led the DNR Bureau of Engineering to conclude that the found iron pipe marks the location of the corner.