

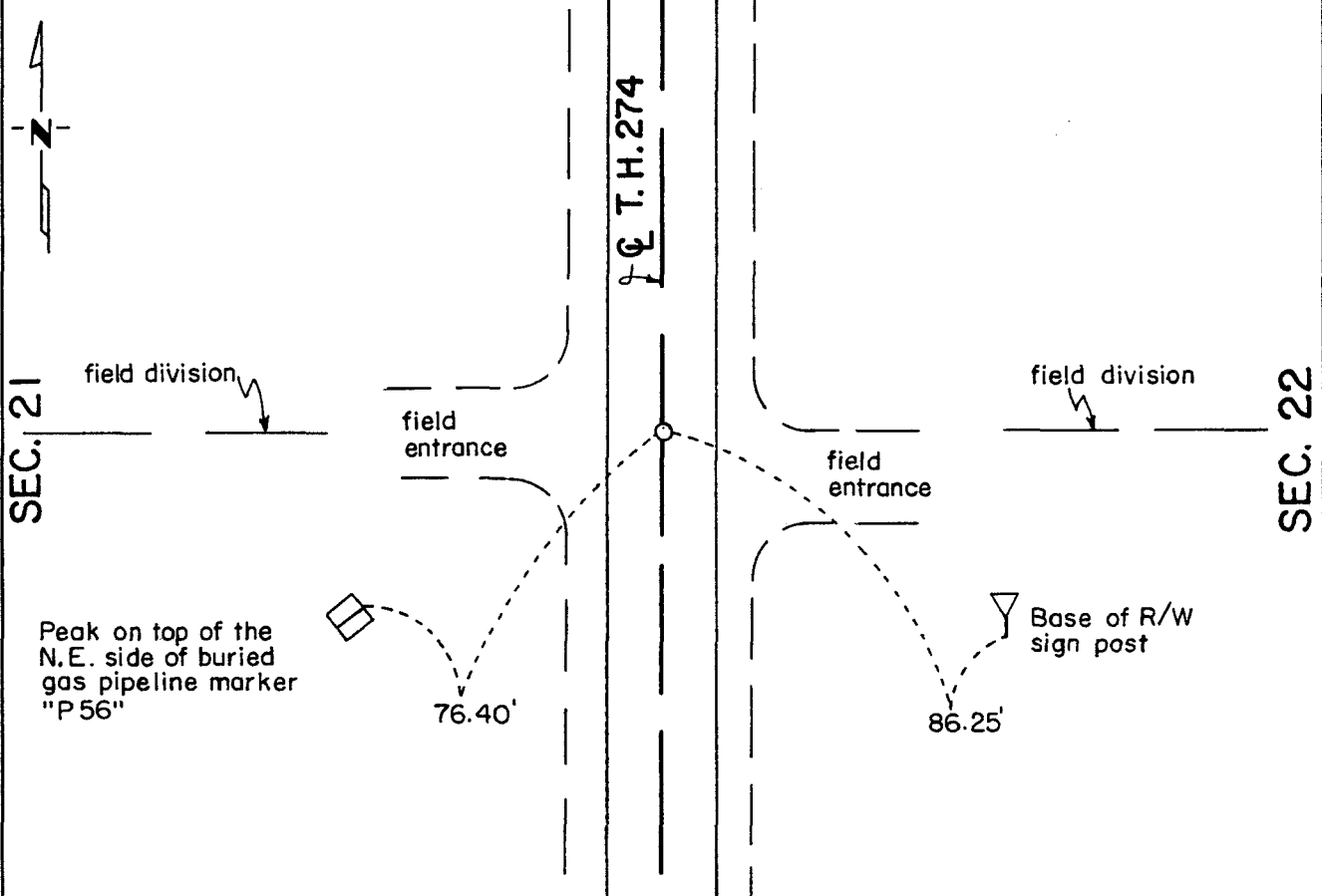
CERTIFICATE OF LOCATION OF GOVERNMENT CORNER

East Quarter _____ Corner of Section 21, Township 115 N, Range 39 W, 5th P.M.
 STATE OF MINNESOTA, County of Yellow Medicine

At the corner location shown on the sketch:

- On Sept. 9, 1994 found a P.K. nail at highway surface
DATE
- left monument as found, lowered monument, removed monument (explain)
- On _____ placed a _____
DATE

SKETCH OF REFERENCE TIES



Statement of evidence relative to this corner location is on back of page.

I hereby certify that this document and the data contained herein was prepared by me or under my direct supervision.

Robert G. Jans Oct. 12, 1994
SIGNATURE DATE

Registration No. 11864
 Land Surveyor, Professional Engineer
 County Surveyor, County Engineer

OFFICE OF THE COUNTY RECORDER

County of Yellow Medicine

I hereby certify that this document was filed in the Co. Recorders office at 10:10 A.M. on the 14 day of October A.D., 19 94

County Recorder *Norman G. Godes*
 By _____, Deputy
 DOCUMENT NO. 207692

Statement of Evidence:

East Quarter Corner Sec. 21-115-39

- 1864 - The original Public Land Survey was completed by Charles E. Davis and J. W. Webb Jr. A wood post was set in a dirt mound to mark the corner. Pits were also dug.
- 1914 - John Norgaard, Yellow Medicine County Surveyor, did not find the corner. He set the corner on line with a fence line to the east according to a survey he did several years prior to 1914. Surveyor's Record, page 338 in the County Recorder's office.
- 1963 - The Minnesota Highway Department right of way map shows that an iron pin was found. It was located at T.H. 274 P.O.T. 395+50.3 and in line with fence lines east and west. According to highway stationing, it was 2655.2 ft. south of the northeast corner of the section and 2662.9 ft. north of the southeast corner of the section.
- 1968 - T.H. 274 was reconstructed. There was a 2 ft. to 3 ft. deep subcut in the area of this corner. Any old evidence of the corner was probably destroyed by this construction.
- 1971 - Minnesota Highway Department survey notes clearly show that the position of this corner was not perpetuated with any type of monument.
- 1993 - Byron Dahle, Registered Land Surveyor, did a section subdivision survey. He established this corner at the centerline of T.H. 274 and in line with field divisions east and west. He shows the corner to be 2653.02 ft. south of the northeast corner of the section and 2663.39 ft. north of the southeast corner of the section. This position is 1.3 ft. north of the prorated distances shown on the highway right of way map.
- 1994 - R. C. Jones, Registered Land Surveyor with Mn/DOT, found a P.K. nail at the surface of T.H. 274. It is at the centerline of the highway and in line with field divisions east and west. Reference ties were set.

The P.K. nail is accepted as the corner location because it fits long standing occupation lines which have been regarded as the quarter section lines for at least 80 years. It is 0.27 ft. east and 5.18 ft. north of the lost location.

For additional information, contact the Mn/DOT Surveys Section at Willmar, Mn 56201.