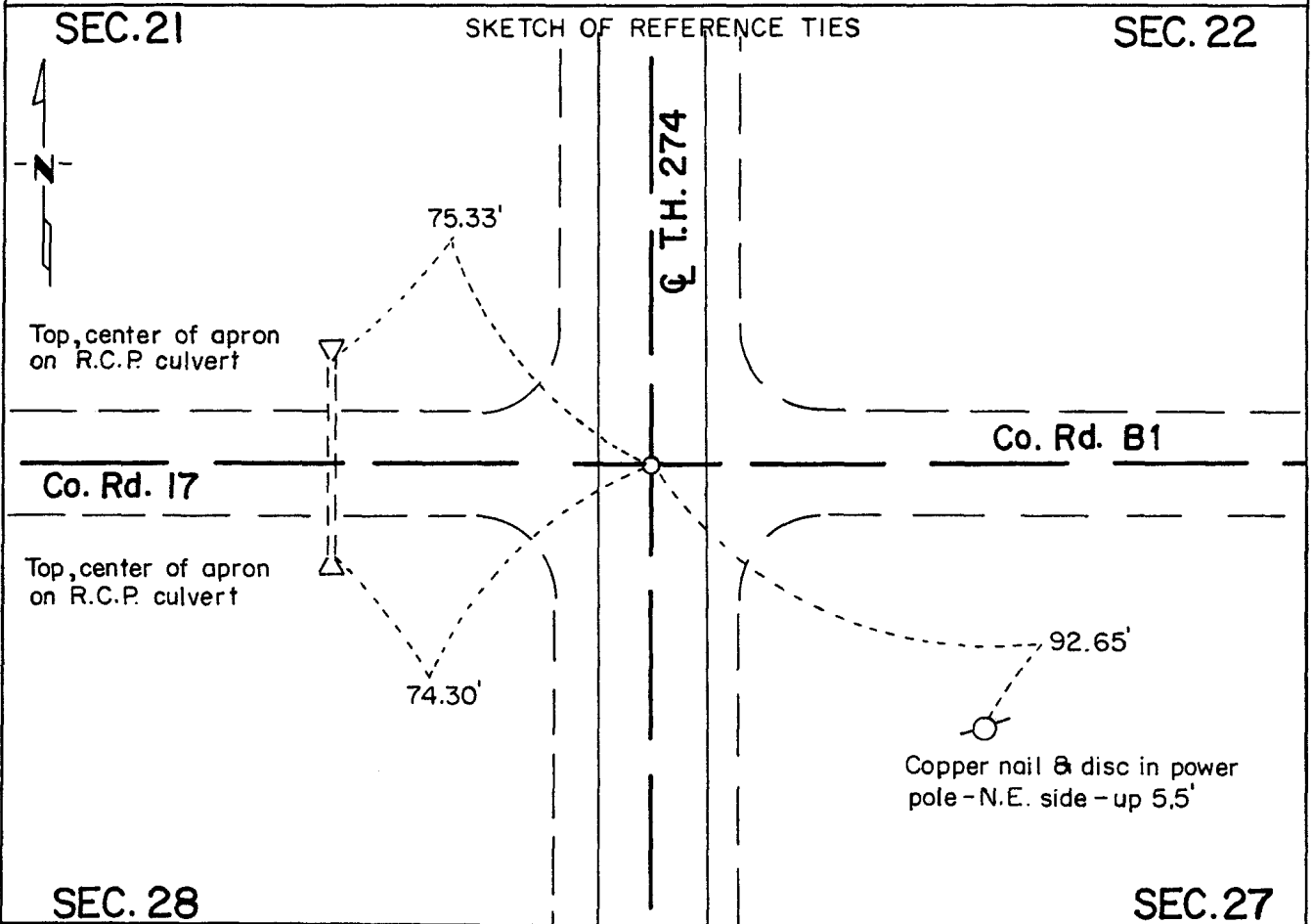


CERTIFICATE OF LOCATION OF GOVERNMENT CORNER

Northeast _____ Corner of Section 28, Township 115 N, Range 39 W, 5th P.M.
STATE OF MINNESOTA, County of Yellow Medicine

At the corner location shown on the sketch:

- On Sept. 9, 1994 found a P.K. nail at highway surface over iron pin
DATE
- left monument as found, lowered monument, removed monument (explain)
- On _____ placed a _____
DATE



Statement of evidence relative to this corner location is on back of page.

I hereby certify that this document and the data contained herein was prepared by me or under my direct supervision.

Robert G. Gano SIGNATURE Oct. 12, 1994 DATE

Registration No. 11864
 Land Surveyor, Professional Engineer
 County Surveyor, County Engineer

OFFICE OF THE COUNTY RECORDER
County of Yellow Medicine

I hereby certify that this document was filed in the Co. Recorders office at 10:15 A.M. on the 14 day of October A.D., 19 94

County Recorder *Normand Goodale*
By _____, Deputy

DOCUMENT NO. 207693

Statement of Evidence:

Northeast Corner Section 28-115-39

- 1864 - The original Public Land Survey was completed by Charles E. Davis and J. W. Webb Jr. A wood post was set in a mound of dirt to mark the corner. Pits were also dug.
- 1901 - John Norgaard, Yellow Medicine County Surveyor, found a stone at the intersection of roads. It was set by adjoining landowners in the government mound when the corner was plain to see. A 6" by 6" by 2 ft. long jasper stone monument was set level with the ground. Survey Book B, page 77 in the County Recorder's office.
- 1963 - The Minnesota Highway Department right of way map shows that an iron pin was found at T.H. 274 P.I. 368+87.4 and that a cast iron monument was set at the corner. This was located at the centerline of an east/west road.
- 1968 - T.H. 274 was reconstructed. There was a 3 ft. subcut in the area of this corner. It appears that all old evidence of the corner was probably destroyed by the construction.
- 1971 - Minnesota Highway Department survey notes show that a 3/4" diameter iron pin was set at T.H. 274 P.I. 368+87.4.
- 1993 - Byron Dahle, Registered Land Surveyor, found the iron pin and set a P.K. nail at the road surface.
- 1994 - R. C. Jones, Registered Land Surveyor with Mn/DOT, found the P.K. nail at the road surface. It is located at the centerline of T.H. 274, the centerline of Co. Rd. 17 to the west, and the centerline of Co. Rd. B 1 to the east.

The P.K. nail is accepted as the corner location because it fits the location shown on the right of way map and it also fits the location described by Norgaard.

For additional information, contact the Mn/DOT Surveys Section at Willmar, Mn 56201.