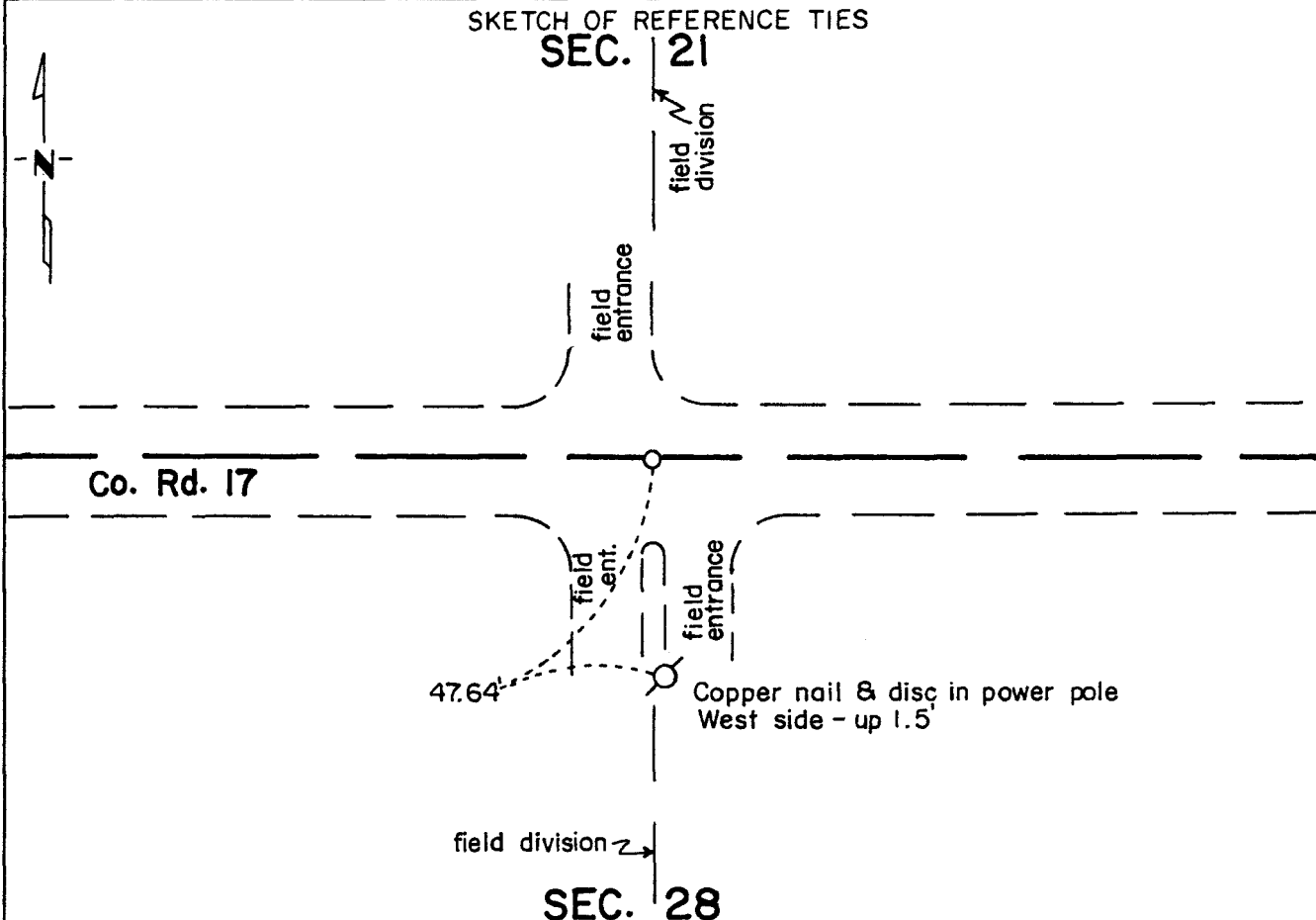


# CERTIFICATE OF LOCATION OF GOVERNMENT CORNER

North Quarter \_\_\_\_\_ Corner of Section 28, Township 115 N, Range 39 W, 5th P.M.  
STATE OF MINNESOTA, County of Yellow Medicine

At the corner location shown on the sketch:

- On Sept. 9, 1994 found a 3/4" diameter iron pipe with a surveyor's cap on top a  
DATE few inches below the road surface
- left monument as found,  lowered monument,  removed monument (explain)
- On \_\_\_\_\_ placed a \_\_\_\_\_  
DATE



Statement of evidence relative to this corner location is on back of page.

I hereby certify that this document and the data contained herein was prepared by me or under my direct supervision.

Robert C. Jones Oct. 12, 1994  
SIGNATURE DATE

Registration No. 11864

- Land Surveyor,  Professional Engineer
- County Surveyor,  County Engineer

OFFICE OF THE COUNTY RECORDER

County of Yellow Medicine

I hereby certify that this document was filed in the Co. Recorders office at 10:20 A.M. on the 14 day of October A.D., 19 94

County Recorder Norman J. Anderson

By \_\_\_\_\_, Deputy

DOCUMENT NO. 207694

Statement of Evidence:

North Quarter Corner Section 28-115-39

- 1864 - The original Public Land Survey was completed by Charles E. Davis and J. W. Webb Jr. A wood post was set in a mound of dirt to mark the corner. Pits were also dug.
- 1901 - John Norgaard, Yellow Medicine County surveyor, did work in this area. However, he did not refer to this corner in his old notes.
- 1960 - The Yellow Medicine County Highway Department worked on County Road No. 17. Nothing was found at the corner. It's position was assumed to be at the centerline of the road and in line with field divisions north and south. It is not known whether anything was set to monument the assumed position at that time.
- 1993 - Byron Dahle, Registered Land Surveyor, did a section subdivision survey. He set a 3/4" diameter iron pipe with a surveyor's cap on top to mark the corner at the center of the county road and in line with field divisions north and south. His survey shows the corner to be 2693.46 ft. east of the southwest corner of the section and 2689.17 ft. west of the southeast corner of the section.
- 1994 - R. C. Jones, Registered Land Surveyor with Mn/DOT, found the 3/4" diameter iron pipe a few inches below the road surface. A P.K. nail was set above the iron at the road surface and one reference tie was set. No other objects were available for reference ties.

The iron pipe is located at the centerline of Co. Rd. 17 and in line with field divisions north and south. It is also on line with a power pole line to the north.

The iron pipe is accepted as the corner location because it fits long standing occupation lines and it is only 2.58 ft. east of the lost location. It is 40.11 ft. north of the lost location. However, it is in the center of a road that has been in existence since at least 1901. The road was probably constructed on the section line.

For additional information, contact the Mn/DOT Surveys Section at Willmar, Mn 56201.