

CERTIFICATE OF LOCATION OF GOVERNMENT CORNER

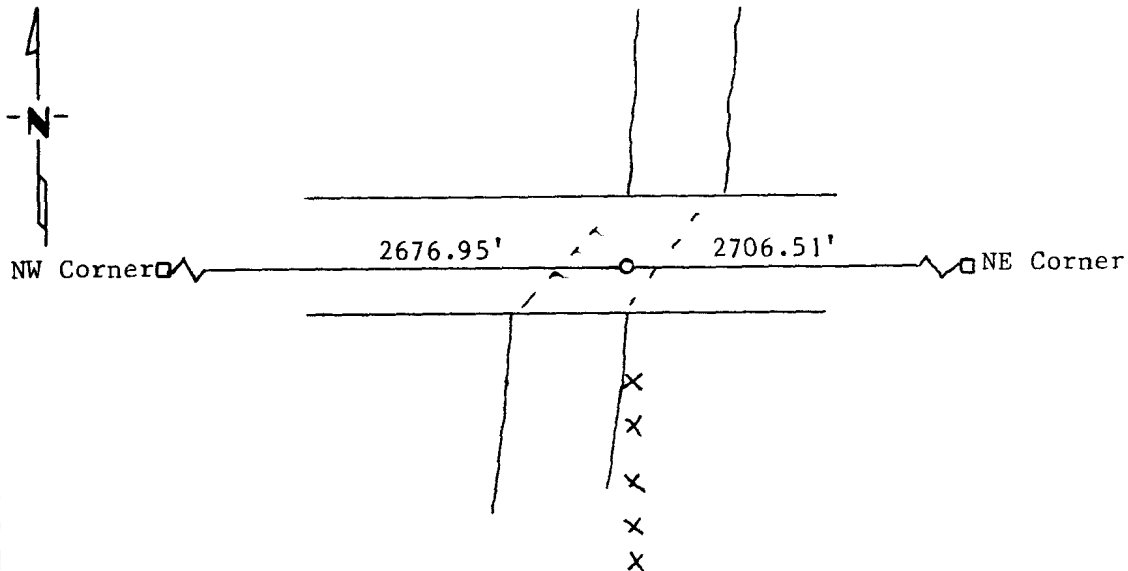
North Quarter _____ Corner of Section 23, Township 114N, Range 43W, 5th P.M.

STATE OF MINNESOTA, County of Yellow Medicine

At the corner location shown on the sketch:

- On _____ found a _____
DATE
- left monument as found, lowered monument, removed monument (explain)
- On 3/30/89 placed a 1 1/2" iron pipe on line and with old wooden fence line
DATE
to South Collens the farmer in NW 1/4 said ditch to South was all on his land.

SKETCH OF REFERENCE TIES



Statement of evidence relative to this corner location is on back of page.

I hereby certify that this document and the data contained herein was prepared by me or under my direct supervision.

Lyle E. Messing Jan 10, 1991
SIGNATURE DATE

Registration No. 11943
 Land Surveyor, Professional Engineer
 County Surveyor, County Engineer

OFFICE OF THE COUNTY RECORDER

County of Yellow Medicine

I hereby certify that this document was filed in the Co. Recorders office at 3:00 P.M. on the 2nd day of February A.D., 19 95

County Recorder Norman J. Opdahl

By Kay Nordahl, Deputy

DOCUMENT NO. 208535

Statement of Evidence: