

CERTIFICATE OF LOCATION OF GOVERNMENT CORNER

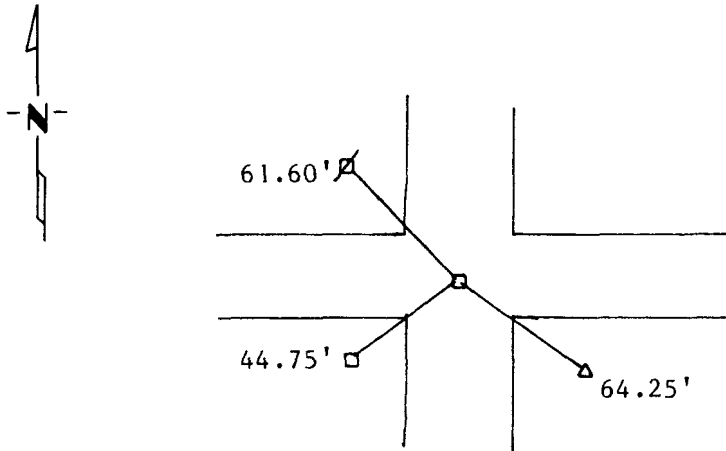
NORTH EAST _____ Corner of Section 18, Township 115, Range 42, 5th P.M.

STATE OF MINNESOTA, County of YELLOW MEDICINE

At the corner location shown on the sketch:

- On 10/15/1990 found a 6x6" cut Granite stone
DATE
- left monument as found, lowered monument, removed monument (explain)
- On 10/15/1990 placed a Iron pipe on top of it.
DATE

SKETCH OF REFERENCE TIES



Nail and seal in power pole NW. 61.60'
 1 1/2" iron pipe SW. 44.75'
 Top center of Telephone pedestal SE. 64.25'

Statement of evidence relative to this corner location is on back of page.

I hereby certify that this document and the data contained herein was prepared by me or under my direct supervision.

Leyle C. Mooney 10-16-91
SIGNATURE DATE

Registration No. 119430
 Land Surveyor, Professional Engineer
 County Surveyor, County Engineer

OFFICE OF THE COUNTY RECORDER

County of Yellow Medicine

I hereby certify that this document was filed in the Co. Recorders office at 3:10 P.M. on the 2nd day of February A.D., 1995

County Recorder Norman J. Opdahl

By Kay Nordahl, Deputy

DOCUMENT NO. 208537

Statement of Evidence: