

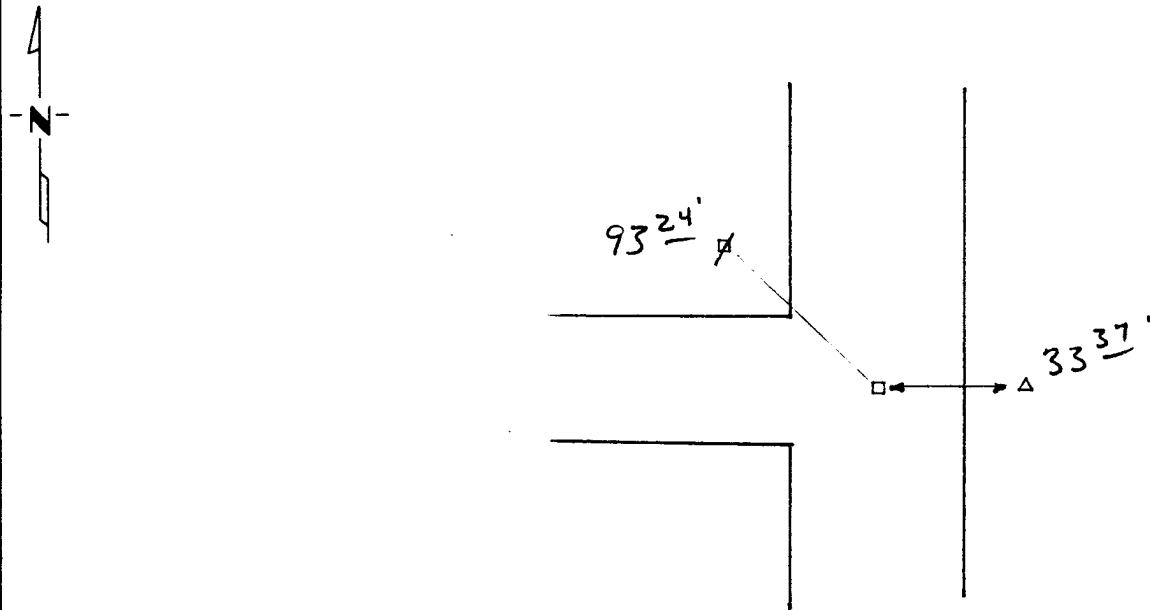
CERTIFICATE OF LOCATION OF GOVERNMENT CORNER

East Quarter _____ Corner of Section 3, Township 114, Range 38, _____ P.M.
 STATE OF MINNESOTA, County of Yellow Medicine

At the corner location shown on the sketch:

- On Oct. 26, 1994 found a large field stone 12" down - placed a 5/8" iron stake
DATE w/seal #11943 next to stone
- left monument as found, lowered monument, removed monument (explain)
- On Oct. 26, 1994 placed a 1" iron pipe w/seal #11943 over stone at the surface
DATE

SKETCH OF REFERENCE TIES



Nail & seal in power pole NW 93.24'
 Nail & seal in telephone ped. post E 33.37

Statement of evidence relative to this corner location is on back of page.

I hereby certify that this document and the data contained herein was prepared by me or under my direct supervision.

Lyle C. Mooney Feb 7-1995
SIGNATURE DATE

Registration No. 11843

- Land Surveyor, Professional Engineer
- County Surveyor, County Engineer

OFFICE OF THE COUNTY RECORDER
 County of Yellow Medicine

I hereby certify that this document was filed in the Co. Recorders office at 3:30 P.M. on the 31 day of May A.D., 19 95

County Recorder Diamond Oxell

By _____, Deputy

DOCUMENT NO. 209237

Statement of Evidence: