

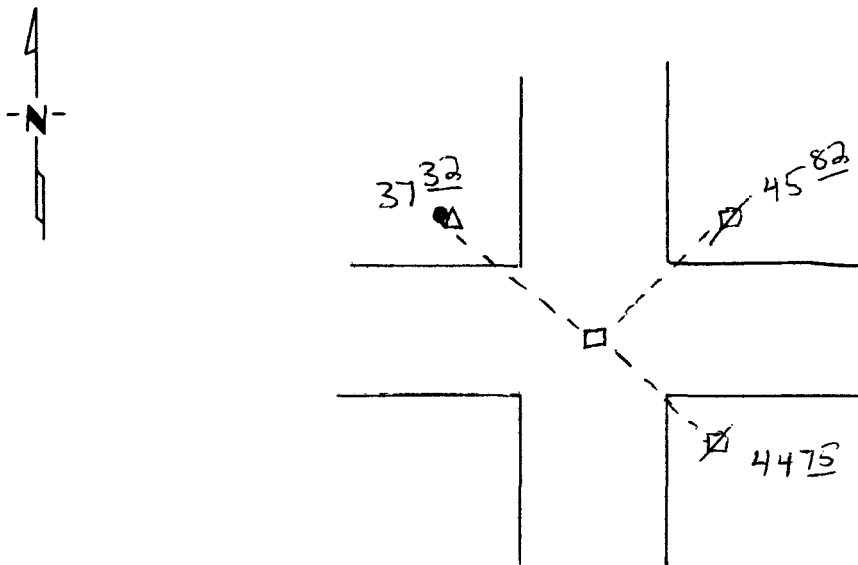
CERTIFICATE OF LOCATION OF GOVERNMENT CORNER

Northeast _____ Corner of Section 36, Township 115, Range 42, 5th P.M.
STATE OF MINNESOTA, County of Yellow Medicine

At the corner location shown on the sketch:

- On May 5, 1995 found a 6"x6"x24" square cut granite stone with 2 small field stones next to it, 3' down
DATE
- left monument as found, lowered monument, removed monument (explain)
- On May 5, 1995 placed a 1" iron pipe w/seal #11943 over stone at the road surface.
DATE

SKETCH OF REFERENCE TIES



Nail & seal in power pole SE 44.75'
 Nail & seal in power pole NE 45.82'
 Nail & seal in tele. pedestal post NW 37.32'

Statement of evidence relative to this corner location is on back of page.

I hereby certify that this document and the data contained herein was prepared by me or under my direct supervision.

Ryle E. Mooney 5-995
 SIGNATURE DATE
 Registration No. 11943
 Land Surveyor, Professional Engineer
 County Surveyor, County Engineer

OFFICE OF THE COUNTY RECORDER
County of Yellow Medicine

I hereby certify that this document was filed in the Co. Recorders office at 9:40 A.M. on the 30 day of June A.D., 19 95

County Recorder Roman J. Spidahl
By _____, Deputy

DOCUMENT NO. 209403

Statement of Evidence: