

# CERTIFICATE OF LOCATION OF GOVERNMENT CORNER

East Quarter \_\_\_\_\_ Corner of Section 28, Township 115, Range 45, 5th P.M.

STATE OF MINNESOTA, County of Yellow Medicine

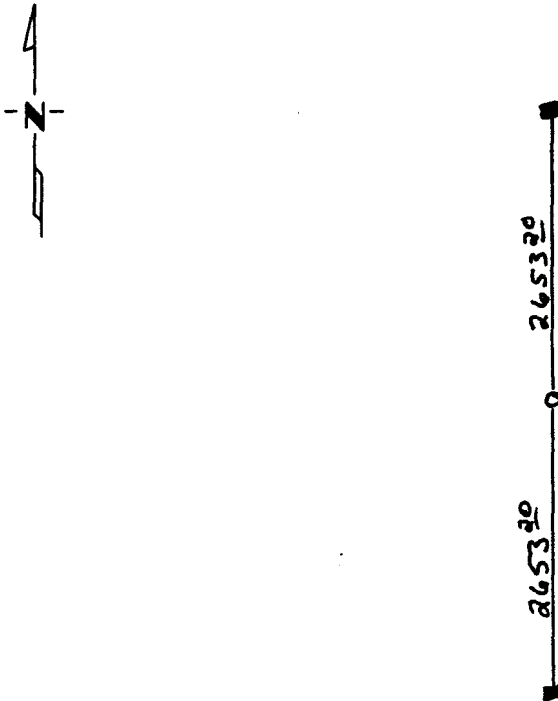
At the corner location shown on the sketch:

On \_\_\_\_\_ found a \_\_\_\_\_  
DATE

left monument as found,  lowered monument,  removed monument (explain)

On Dec. 27, 1994 placed a 5/8" iron stake w/seal #11943 midway and on line.  
DATE

## SKETCH OF REFERENCE TIES



Statement of evidence relative to this corner location is on back of page.

I hereby certify that this document and the data contained herein was prepared by me or under my direct supervision.

Lyle C Mosley 4-10-95  
SIGNATURE DATE

Registration No. 11943  
 Land Surveyor,  Professional Engineer  
 County Surveyor,  County Engineer

### OFFICE OF THE COUNTY RECORDER

County of Yellow Medicine

I hereby certify that this document was filed in the Co. Recorders office at 10:05 A.M. on the 30 day of June A.D., 19 95

County Recorder Donna L. Ordahl

By \_\_\_\_\_, Deputy

DOCUMENT NO. 209408

Statement of Evidence:

John Norgaard (County Surveyor who resurveyed Yellow Medicine County in the early 1900s) always established the quarter corners midway and on line between the section corners.

This was a blacktop road with no record of a corner, I did not dig but set the corner midway and on line, the corner is in line with a quarter line fence to the east.

The corner is along the east side of the road, because the road curves around a building site.