

CERTIFICATE OF LOCATION OF GOVERNMENT CORNER

NORTHEAST Corner of Section 25, Township 115 N, Range 39 W, 5th P.M.

STATE OF MINNESOTA, County of YELLOW MEDICINE

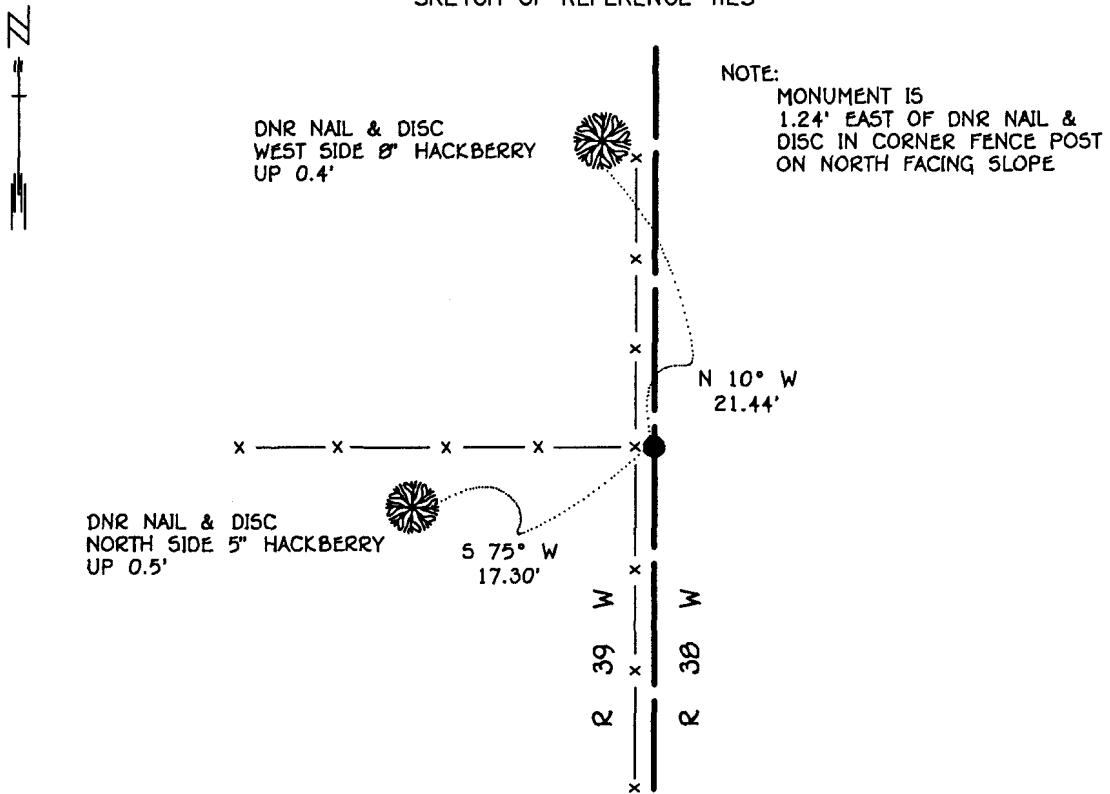
At the corner location shown on the sketch:

On 6-20-95 found a 6" x 6" CUT JASPER GRANITE STONE, UP 0.3'
DATE

left monument as found, lowered monument, removed monument (explain)

On _____ Placed a _____
DATE

SKETCH OF REFERENCE TIES



BEARINGS OBSERVED WITH COMPASS

Statement of evidence relative to this corner location is on back of page.

JBM OCT '95
SPK00277.00.00.01

I hereby certify that this document and the data contained herein was prepared by me or under

my direct supervision
Rene W. Shupard 11/6/95
SIGNATURE DATE

License Number 17003

Land Surveyor, Professional Engineer
 County Surveyor, County Engineer

OFFICE OF THE COUNTY RECORDER
County of Yellow Medicine

I hereby certify that this document was filed in the Co. recorders office at 9:30 A.M. on the 7 day of November A.D., 1995

County Recorder Arnaud Opdahl
By _____, Deputy

DOCUMENT NO. 210266

The DNR Bureau of Engineering contacted the following for survey information:

Minnesota Secretary of State's Office
Mn/DOT Offices in St. Paul and Willmar
Yellow Medicine County Recorder's Office
Yellow Medicine County Highway Engineer's Office
Montevideo City Engineer's Office
Bonnema Surveys of Willmar
Moseng and Zieske Surveying, Inc. of Marshall
Michael Nyberg, RLS #13145, of Carlos
West Central Land Services, Inc. of Willmar
K.B. MacKichan and Associates, Inc. of Redwood Falls

- 1857 U.S. General Land Office notes obtained from the Secretary of State's Office show that a wood post was set to mark corner with the following bearing trees marked:
24" Lind, North 43° West, 18 links (11.88 feet)
10" Lind, North 46 1/2° East, 20 links (13.20 feet)
10" Lind, South 80° East, 20 links (13.20 feet)
10" Br. Oak, South 31 1/2° West, 23 links (15.18 feet)
- 1864 U.S. General Land Office notes obtained from the Secretary of State's Office show that the wood post that was set in 1857 was found at corner. The 1857 bearing trees were all cut down so new bearing trees were taken:
20" Lind, North 75° West, 35 links (23.10 feet)
18" Lind, South 9° West, 16 links (10.56 feet)
18" Lind, North 12° East, 83 links (54.78 feet)
16" Elm, South 80° East, 25 links (16.50 feet)
- 1897 Surveyor's Record Book, page 129, obtained from the County Recorder's Office, contains a survey by John Norgaard, County Surveyor. Survey shows corner but does not indicate what was found or set. The corner is shown:
2656 feet from the east quarter corner of Section 25
- 1901 Surveyor's Record Book B, pages 70 and 72, obtained from the County Recorder's Office, contains a collection of what was found or set at government corners by John Norgaard, County Surveyor, in a township re-monumentation survey. Norgaard states "located from stump of government B.T. Elm 15" South 80° East 16.5 feet, other B.T.s gone". A 6" by 6" by 24" jasper granite stone was set at this location, top of monument 4" above ground.
- 1916 Surveyor's Record Book, page 373, obtained from the County Recorder's Office, contains a survey by John Norgaard, County Surveyor. Survey shows corner but does not indicate what was found or set. The corner is shown:
2656 feet from the east quarter corner of Section 25
- No Date A right-of-way map for State Trunk Highway Number 67 obtained from Mn/DOT in St. Paul shows that a stone was found at corner.

- 1977 May, a subdivision of Section 30 shown on Certificate of Surveys in the northeast quarter of Section 30 and in the east half of Section 19 obtained from West Central Land Services, Inc. shows corner but does not indicate what was found or set. The corner is shown:
2644.49 feet from the east quarter corner of Section 25
5288.98 feet from the northeast corner of Section 36
- 1978 May, DNR Bureau of Engineering found a 6" by 6" cut jasper granite stone at corner. Searched for but found no evidence of the GLO bearing trees. The following ties were taken to corner:
1 foot east of a corner fence post with fences north, south and west
nail and DNR disc up 6 feet on the northwest side of an 18" Triple Ash, northeast, 36.30 feet
nail and DNR disc up 3 feet on the north side of a 30" Elm, east-southeast, 19.62 feet
nail and DNR disc up 1.5 feet on the south side of a 30" Elm, west-southwest, 35.15 feet
nail and DNR disc up 2.5 feet on the northwest side of a 24" Elm, northwest, 32.83 feet
- 1995 June 20, DNR Bureau of Engineering found a 6" by 6" cut jasper granite stone at corner. Searched for and found the 1978 tie trees in poor condition (Elms are dead and Ash is leaning), took new ties as shown on sketch of reference ties. The stone was found to be:
2645.05 feet from the east quarter corner of Section 25
5290.10 feet from the northeast corner of Section 36

Analysis of the above information led the DNR Bureau of Engineering to conclude that the found stone which was set in 1901 from the stump of a government bearing tree marks the original position of the corner.