

CERTIFICATE OF LOCATION OF GOVERNMENT CORNER

NORTHEAST Corner of Section 36, Township 115 N, Range 39 W, 5th P.M.

STATE OF MINNESOTA, County of YELLOW MEDICINE

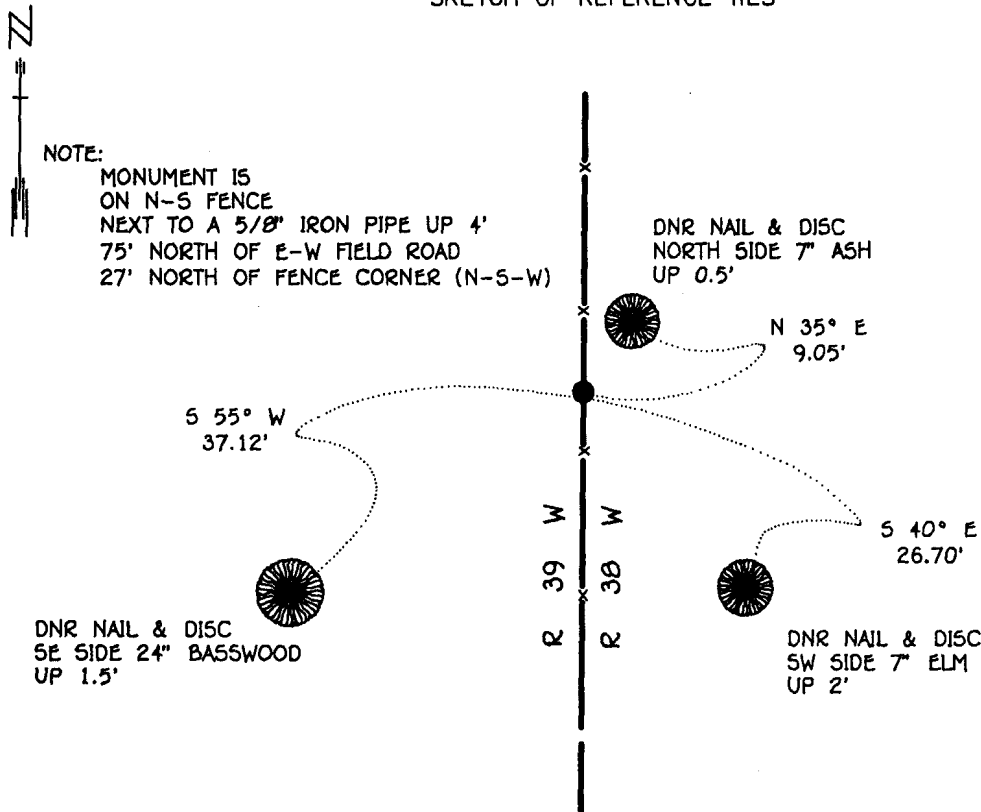
At the corner location shown on the sketch:

On 6-20-95 found a 6" x 6" CUT JASPER GRANITE STONE, FLUSH
DATE

left monument as found, lowered monument, removed monument (explain)

On _____ Placed a _____
DATE

SKETCH OF REFERENCE TIES



BEARINGS OBSERVED WITH COMPASS

Statement of evidence relative to this corner location is on back of page.

JBM OCT '95
SPK.00277.00.00.01

I hereby certify that this document and the data contained herein was prepared by me or under

my direct supervision
Bruce W. Shippert 11/6/95
SIGNATURE DATE

License Number 17003

Land Surveyor, Professional Engineer
 County Surveyor, County Engineer

OFFICE OF THE COUNTY RECORDER

County of Yellow Medicine

I hereby certify that this document was filed in the Co. recorders office at 9:40 A.M. on the 7 day of November A.D., 1995

County Recorder Norman J. Cudde

By _____, Deputy

DOCUMENT NO. 210268

The DNR Bureau of Engineering contacted the following for survey information:

Minnesota Secretary of State's Office
Mn/DOT Offices in St. Paul and Willmar
Yellow Medicine County Recorder's Office
Yellow Medicine County Highway Engineer's Office
Montevideo City Engineer's Office
Bonnema Surveys of Willmar
Moseng and Zieske Surveying, Inc. of Marshall
Michael Nyberg, RLS #13145, of Carlos
West Central Land Services, Inc. of Willmar
K.B. MacKichan and Associates, Inc. of Redwood Falls

- 1857 U.S. General Land Office notes obtained from the Secretary of State's Office show that a wood post was set to mark corner with the following bearing trees marked:
16" Elm, North 75 1/2° West, 33 links (21.78 feet)
17" Elm, South 75 1/2° East, 19 links (12.54 feet)
7" Elm, North 68 1/2° East, 11 links (7.26 feet)
20" Lind, South 74 1/2° West, 50 links (33.00 feet)
- 1895 Surveyor's Record Book, page 520, obtained from the County Recorder's Office, contains a survey by John Norgaard, County Surveyor. Survey states that all the government corners in Section 31 were found.
- 1897 Surveyor's Record Book, page 128, obtained from the County Recorder's Office, contains a survey by John Norgaard, County Surveyor. Survey shows corner but does not indicate what was found or set. The corner is shown:
2660 feet from the east quarter corner of Section 36
- 1897 Surveyor's Record Book, page 129, obtained from the County Recorder's Office, contains a survey by John Norgaard, County Surveyor. Survey shows corner but does not indicate what was found or set. The corner is shown:
2656 feet from the east quarter corner of Section 25
- 1901 Surveyor's Record Book B, pages 70 and 72, obtained from the County Recorder's Office, contain a collection of what was found or set at government corners by John Norgaard, County Surveyor, in a township re-monumentation survey. Norgaard states "located from the stump of government B.T. Lind 20" South 74 1/2° West 33 feet, other B.T.'s gone. A 6" by 6" by 24" jasper granite stone was set at this location, top of monument 3" above ground.
- 1929 Surveyor's Record Book, page 520, obtained from the County Recorder's Office, contains a survey by John Norgaard, County Surveyor. Survey shows corner but does not indicate what was found or set. The corner is shown:
2902 feet from the north quarter corner of Section 31

- 1977 May, a subdivision of Section 30 shown on Certificate of Surveys in the northeast quarter of Section 30 and in the east half of Section 19 obtained from West Central Land Services, Inc. shows corner but does not indicate what was found or set. The corner is shown:
2644.49 feet from the east quarter corner of Section 25
2887.13 feet from the north quarter corner of Section 31
- 1977 May, a Certificate of Survey in the south half of Section 31 and notes obtained from Moseng and Zieske Land Surveying, Inc. show that a stone was found at corner. The following ties are shown to corner:
27 feet north of a corner fence post with fences north, south and west
nail and bottle cap in 12" Elm, northeast, 14.30 feet
nail and bottle cap in 24" Ash, southwest, 37.0 feet
next to a five foot stainless steel pipe
2881.64 feet from the north quarter corner of Section 31
2664.13 feet from the east quarter corner of Section 36
- 1995 June 20, DNR Bureau of Engineering found a 6" by 6" cut jasper granite stone at corner. Searched for but found no evidence of the nail and bottle caps set in trees in 1977. The stone was found to be:
2645.05 feet from the east quarter corner of Section 25
2887.52 feet from the north quarter corner of Section 31
5290.10 feet from the northeast corner of Section 25

Analysis of the above information led the DNR Bureau of Engineering to conclude that the found stone which was set in 1901 from the stump of a government bearing tree marks the original position of the corner.