

# CERTIFICATE OF LOCATION OF GOVERNMENT CORNER

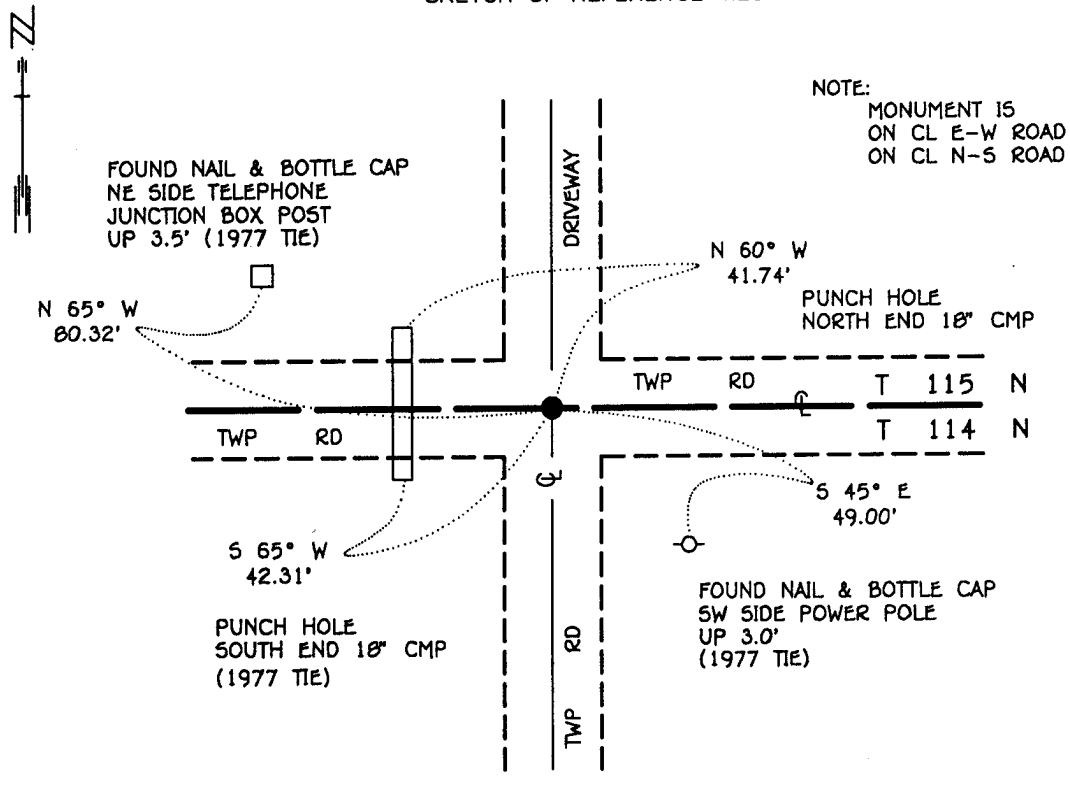
NORTHEAST Corner of Section 6, Township 114 N, Range 30 W, 5<sup>th</sup> P.M.

STATE OF MINNESOTA, County of YELLOW MEDICINE

At the corner location shown on the sketch:

- On 6-21-95 found a 1/2" REBAR, DOWN 0.4'  
DATE
- left monument as found,     lowered monument,     removed monument (explain)
- On \_\_\_\_\_ Placed a \_\_\_\_\_  
DATE

### SKETCH OF REFERENCE TIES



BEARINGS OBSERVED WITH COMPASS

Statement of evidence relative to this corner location is on back of page.

JBM OCT '95  
SPK00277.00.00.01

I hereby certify that this document and the data contained herein was prepared by me or under my direct supervision.

Bruce W. Sheppard SIGNATURE    11/6/95 DATE

License Number 17003

- Land Surveyor,     Professional Engineer
- County Surveyor,     County Engineer

OFFICE OF THE COUNTY RECORDER  
County of Yellow Medicine

I hereby certify that this document was filed in the Co. recorders office at 9:45 A.M. on the 7 day of November A.D., 1995

County Recorder Dorinda Spidle  
By \_\_\_\_\_, Deputy

DOCUMENT NO. 210269

The DNR Bureau of Engineering contacted the following for survey information:

Minnesota Secretary of State's Office  
Mn/DOT Offices in St. Paul and Willmar  
Yellow Medicine County Recorder's Office  
Yellow Medicine County Highway Engineer's Office  
Montevideo City Engineer's Office  
Bonnema Surveys of Willmar  
Moseng and Zieske Surveying, Inc. of Marshall  
Michael Nyberg, RLS #13145, of Carlos  
West Central Land Services, Inc. of Willmar  
K.B. MacKichan and Associates, Inc. of Redwood Falls

- 1857 U.S. General Land Office notes obtained from the Secretary of State's Office show the corner marked with a wood post and a charred stake driven in a mound of earth with trench per instructions.
- 1889 Surveyor's Record Book, page 19, obtained from the County Recorder's Office, contains a survey by Jonah Peterman, County Surveyor. Survey states that corner was found but a description of a monument is not given.
- 1895 Surveyor's Record Book, page 520, obtained from the County Recorder's Office, contains a survey by John Norgaard, County Surveyor. Survey states that all the government corners in Section 31 were found.
- 1897 Surveyor's Record Book, page 128, obtained from the County Recorder's Office, contains a survey by John Norgaard, County Surveyor. Survey shows a stone at corner but does not indicate if found or set.
- 1901 Surveyor's Record Book B, pages 9, 70 and 134 obtained from the County Recorder's Office, contain a collection of what was found or set at government corners by John Norgaard, County Surveyor, in a township re-monumentation survey. Norgaard states "found stone at the intersection of roads set by me 6 years ago in the government mound. A 6" by 6" by 24" jasper granite stone was set at this location, top of monument level with ground. The corner is shown:  
5370 feet from the northeast corner of Section 31
- 1929 Surveyor's Record Book, page 520, obtained from the County Recorder's Office, contains a survey by John Norgaard, County Surveyor. Survey shows corner but does not indicate what was found or set. The corner is shown:  
2685 feet from the east quarter corner of Section 31  
2651 feet from the north quarter corner of Section 6
- 1935 Surveyor's Record Book, page 47, obtained from the County Recorder's Office, contains a survey by John Norgaard. Survey shows corner but does not indicate what was found or set. The corner is shown:  
2642 feet from the north quarter corner of Section 5

- 1938 Surveyor's Record Book, page 547, obtained from the County Recorder's Office, contains a survey by John Norgaard, County Surveyor. Survey states that a stone was set for corner but no information is given on how its location was determined. The corner is shown:  
on the south side of a road grade  
2651 feet from the north quarter corner of Section 6
- No Section Corner Tie Book obtained from the County Highway Engineer's Office does not indicate  
Date what was found or set at corner but the following ties are shown to it:  
mail box, northwest, 35.5 feet  
third fence post, southwest, 61.5 feet  
third fence post, southeast, 79.6 feet
- 1977 May, a Certificate of Survey in the south half of Section 31 and notes obtained from Moseng and Zieske Land Surveying, Inc. show that a stone was found at corner. The following ties are shown to corner:  
nail and bottle cap in buried cable marker post, northwest, 80.24 feet  
nail and bottle cap in top of 18" CMP, southwest, 42.29 feet  
power pole, southeast, 49.0 feet  
at the intersection of roads north, south, east and west  
2685.34 feet from the east quarter corner of Section 31  
5370.68 feet from the northeast corner of Section 31
- 1977 May, a Certificate of Location of Government Corner obtained from the County Recorder's Office, signed by Lyle Moseng, RLS #11943, shows that a granite stone was found at corner. A number 4 rebar was set over the granite stone and the following ties were taken:  
at the intersection of roads east, west and south  
nail and bottle cap in power pole, southeast, 49.00 feet  
nail and bottle cap in 18" CMP, southwest, 42.27 feet  
nail and bottle cap in brace pole for buried telephone marker, northwest, 80.24 feet
- 1995 June 21, DNR Bureau of Engineering found a rebar at corner. Searched for and found record ties as shown on sketch of reference ties. The rebar was found to be:  
5369.48 feet from the northeast corner of Section 31  
2685.40 feet from the east quarter corner of Section 31  
2643.37 feet from the north quarter corner of Section 5

Analysis of the above information led the DNR Bureau of Engineering to conclude that the found rebar which was set in 1977 over a stone that was set in 1901 in place of the government stake marks the original position of the corner.