

# CERTIFICATE OF LOCATION OF GOVERNMENT CORNER

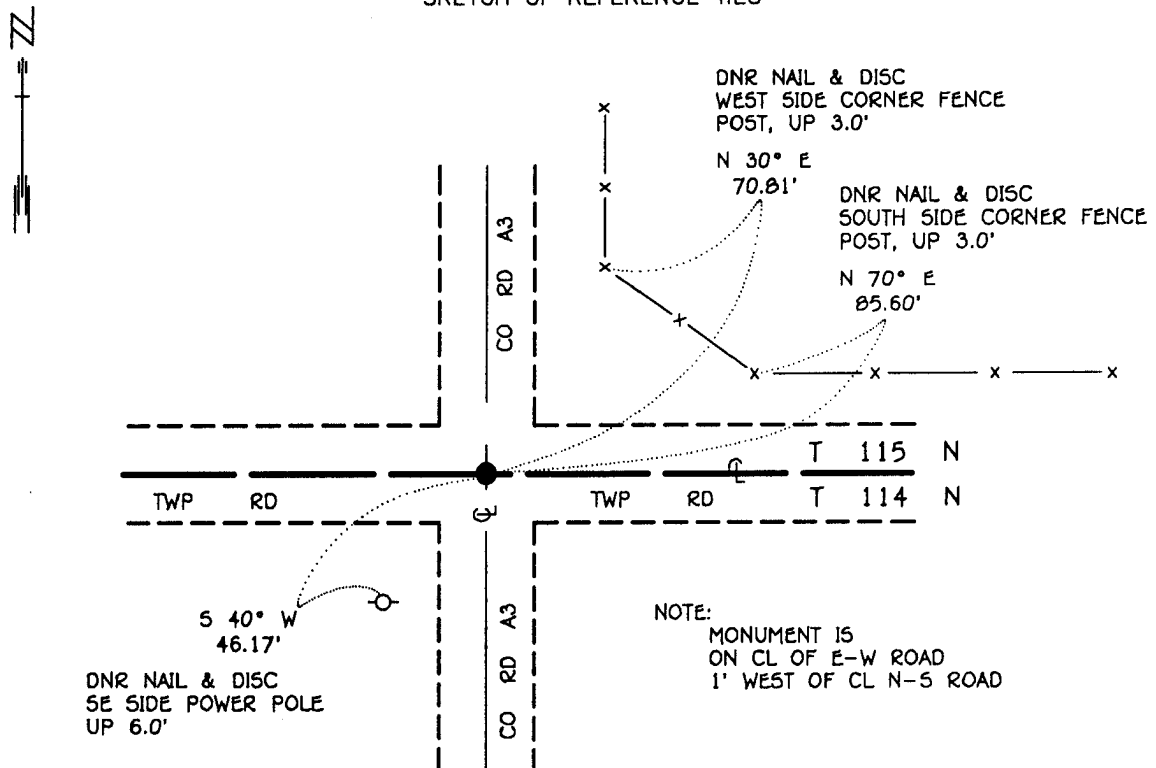
NORTHEAST Corner of Section 5, Township 114 N, Range 38 W, 5<sup>th</sup> P.M.

STATE OF MINNESOTA, County of YELLOW MEDICINE

At the corner location shown on the sketch:

- On 6-21-95 found a 6" x 6" CUT STONE, DOWN 4.3'  
DATE
- left monument as found,     lowered monument,     removed monument (explain)
- On 6-21-95 Placed a 3/4" x 24" REBAR WITH ALUMINUM CAP STAMPED  
DATE "DNR SURVEY MARKER", OVER STONE, DOWN 0.7'

SKETCH OF REFERENCE TIES



BEARINGS OBSERVED WITH COMPASS

Statement of evidence relative to this corner location is on back of page.

JBM OCT '95  
SPK00277.00.00.01

I hereby certify that this document and the data contained herein was prepared by me or under my direct supervision.

Bruce W. Sheppard 11/6/95  
SIGNATURE DATE

License Number 17003

- Land Surveyor,     Professional Engineer
- County Surveyor,     County Engineer

OFFICE OF THE COUNTY RECORDER  
County of Yellow Medicine

I hereby certify that this document was filed in the Co. recorders office at 9:55 A.M. on the 7 day of November A.D., 1995

County Recorder Norman Anderson  
By \_\_\_\_\_, Deputy

DOCUMENT NO. 210271

Northeast Corner Section 5, Township 114 North, Range 38 West

The DNR Bureau of Engineering contacted the following for survey information:

Minnesota Secretary of State's Office  
Mn/DOT Offices in St. Paul and Willmar  
Yellow Medicine County Recorder's Office  
Yellow Medicine County Highway Engineer's Office  
Montevideo City Engineer's Office  
Bonnema Surveys of Willmar  
Moseng and Zieske Surveying, Inc. of Marshall  
Michael Nyberg, RLS #13145, of Carlos  
West Central Land Services, Inc. of Willmar  
K.B. MacKichan and Associates, Inc. of Redwood Falls

- 1857 U.S. General Land Office notes obtained from the Secretary of State's Office show the corner marked with a wood post and a charred stake driven in a mound of earth with trench per instructions.
- 1889 Surveyor's Record Book, page 19, obtained from the County Recorder's Office, contains a survey by Jonah Peterman, County Surveyor. Survey shows corner but does not indicate what was found or set.
- 1891 Surveyor's Record Book, page 47, obtained from the County Recorder's Office, contains a survey by Jonah Peterman, County Surveyor. Survey shows corner but does not indicate what was found or set. A distance to corner is not shown but a marked stake, stone and pits are shown on the south line of the southeast quarter of Section 32. The stake, stone and pits are shown:  
21.30 chains (1405.80') from the north quarter corner of Section 5
- 1901 Surveyor's Record Book B, pages 70 and 134, obtained from the County Recorder's Office, contains a collection of what was found or set at government corners by John Norgaard, County Surveyor, in a township re-monumentation survey. Norgaard states "found stone at the intersection of roads set by adjoining landowners in the government mound when the corner was plain". A 6" by 6" by 24" jasper granite stone was set at this location, top of monument level with ground.
- 1935 Surveyor's Record Book, page 47, obtained from the County Recorder's Office, contains a survey by John Norgaard. Survey shows corner but does not indicate what was found or set. The corner is shown:  
2646 feet from the north quarter corner of Section 5  
1240 feet easterly of a point on the south line of Section 32
- No Section Corner Tie Book obtained from the County Highway Engineer's Office does not indicate what was found or set  
Date at corner but the following ties are shown to it:  
telephone pole, southeast, 43.0 feet  
corner fence post, northeast, 35.8 feet
- 1991 July, a page in a field notebook obtained from Mn/DOT in Willmar states that a PK nail was set for corner over a strong metal attraction. The PK nail is shown:  
at the intersection of roads north, south, east and west  
5478.12 feet from the northeast corner of Section 32
- 1994 November 8, DNR Bureau of Engineering found a 6" by 6" cut stone down 4.3 feet at corner. Searched for but found no evidence of the record ties. The stone was found to be:  
1 foot west of the center line of a north-south road  
on the center line of an east-west road  
5478.40 feet from the northeast corner of Section 32  
2647.37 feet from the north quarter corner of Section 5

Analysis of the above information led the DNR Bureau of Engineering to conclude that the found stone which was set in 1901 in place of a stone that was set in the government mound marks the original position of the corner.