

# CERTIFICATE OF LOCATION OF GOVERNMENT CORNER

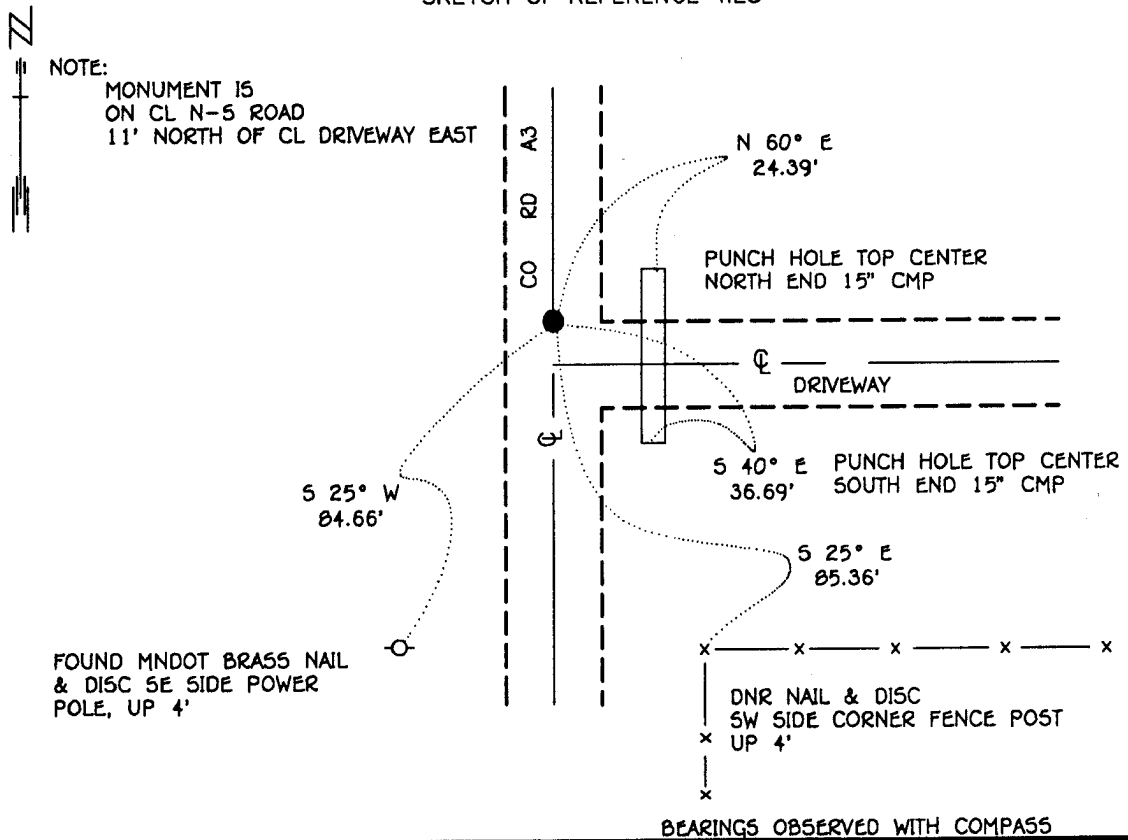
EAST QUARTER Corner of Section 32, Township 115 N, Range 38 W, 5<sup>th</sup> P.M.

STATE OF MINNESOTA, County of YELLOW MEDICINE

At the corner location shown on the sketch:

- On \_\_\_\_\_ found a \_\_\_\_\_  
DATE
- left monument as found,  lowered monument,  removed monument (explain)
- On 6-14-95 Placed a 3/4" x 24" REBAR WITH ALUMINUM CAP STAMPED  
DATE "DNR SURVEY MARKER", DOWN 0.2'

## SKETCH OF REFERENCE TIES



Statement of evidence relative to this corner location is on back of page.

JBM OCT '95  
SPK00277.00.00.01

I hereby certify that this document and the data contained herein was prepared by me or under my direct supervision.

Duane W. Shepperd 11/6/95  
SIGNATURE DATE

License Number 17003

- Land Surveyor,  Professional Engineer
- County Surveyor,  County Engineer

OFFICE OF THE COUNTY RECORDER  
County of Yellow Medicine

I hereby certify that this document was filed in the Co. recorders office at 10:00 A.M. on the 7 day of November A.D., 1995

County Recorder Norman Goodall  
By \_\_\_\_\_, Deputy  
DOCUMENT NO. 210272

The DNR Bureau of Engineering contacted the following for survey information:

Minnesota Secretary of State's Office  
Mn/DOT Offices in St. Paul and Willmar  
Yellow Medicine County Recorder's Office  
Yellow Medicine County Highway Engineer's Office  
Montevideo City Engineer's Office  
Bonnema Surveys of Willmar  
Moseng and Zieske Surveying, Inc. of Marshall  
Michael Nyberg, RLS #13145, of Carlos  
West Central Land Services, Inc. of Willmar  
K.B. MacKichan and Associates, Inc. of Redwood Falls

- 1864 U.S. General Land Office notes obtained from the Secretary of State's Office show the corner marked with a wood post in a mound of earth with pits.
- 1884 Surveyor's Record Book, page 25, obtained from the County Recorder's Office, contains a survey by Jonah Peterman, County Surveyor. Survey states that a post was found at corner.
- Survey shows that a stone was set for the center of Section 33 at the intersection of the quarter lines. A distance from the center of Section 33 to the east quarter corner of Section 32 is not given. A stone was also set for the north sixteenth corner of the southeast quarter of Section 33, 19.87 chains (1311.42') from the center of section.
- 1891 Surveyor's Record Book, page 47, obtained from the County Recorder's Office, contains a survey by Jonah Peterman, County Surveyor. Survey shows that an iron post was established at corner. No information is given about how the location of the corner was determined. The corner is shown:
- 38.65 chains (2550.90') from a stone which was set by G.E. Olds, County Surveyor, for the center of Section 32
- No A right-of-way map for State Trunk Highway Number 67 obtained from Mn/DOT in St. Paul  
Date shows an iron stake at corner but does not indicate if found or set and no distances or angles are shown to it.
- 1991 Bob Jones, Project Surveyor for Mn/DOT in Willmar, computed the lost position for corner and conducted a field search by scanning the area with an electronic metal detector but no metal attraction was obtained. A spike was found 84 feet south of the computed lost position. A position for corner was not determined.
- 1994 September 27, DNR Bureau of Engineering visited the area of corner and found its location to be in north-south County Road A-3. The road surface in area of corner is at natural ground and was probably cut when the road was built. No east-west occupation lines were found in the area of corner.

Located an old rotted wooden corner fence post with maintained fences north and south and a downed fence west in area of the center of Section 32. Searched around the fence post for the record stone but only found numerous boulders and field stones.

1994 December 5, DNR Bureau of Engineering searched for the record stone next to a corner fence post with fences north, south and west found in the area of the N 1/16 corner of the SE 1/4 of Section 33. Some stones were found next to the corner fence post but none of them appeared to have been set by a surveyor.

Also, searched for the record stone next to a corner fence post in a swamp with fences north, south and east found in the area of the center of Section 33. No stones were found next to the corner fence post.

Measured a distance of 1298 feet between the corner fence post found in the area of the N 1/16 SE 1/4 Sec. 33 and the corner fence post found in the area of the center of Sec. 33.

Computed a position for corner on the center line of County Road A-3 and on the easterly extension of a line from the west quarter corner of Section 32 thru the corner fence post found in the area of the center of Section 32. The computed position was found to be:

2823.25 feet from the northeast corner of Section 32

2655.29 feet from the northeast corner of Section 5

2560.62 feet from the corner fence post found in the area of the center of Section 32

3.68 feet south of the westerly extension of a straight line from the corner fence post found in the area of the N 1/16 SE 1/4 Sec. 33 thru the corner fence post found in the area of the center of Section 33

83.67 feet south and 20.78 feet west of the lost position for corner

Conducted a field search at the computed position for corner by scanning the area with an electronic metal detector but no metal attraction was obtained.

1995 June 14, DNR Bureau of Engineering set a DNR Survey Marker at the computed position for corner as shown on the sketch of reference ties.

Analysis of the above information led the DNR Bureau of Engineering to conclude that the computed position for corner on the center line of County Road A-3 and on the easterly extension of a line from the west quarter corner of Section 32 thru a corner fence post found in the area of the center of Section 32 marks the location of the corner.