

CERTIFICATE OF LOCATION OF GOVERNMENT CORNER

NORTHEAST Corner of Section 31, Township 115 N, Range 30 W, 5th P.M.

STATE OF MINNESOTA, County of YELLOW MEDICINE

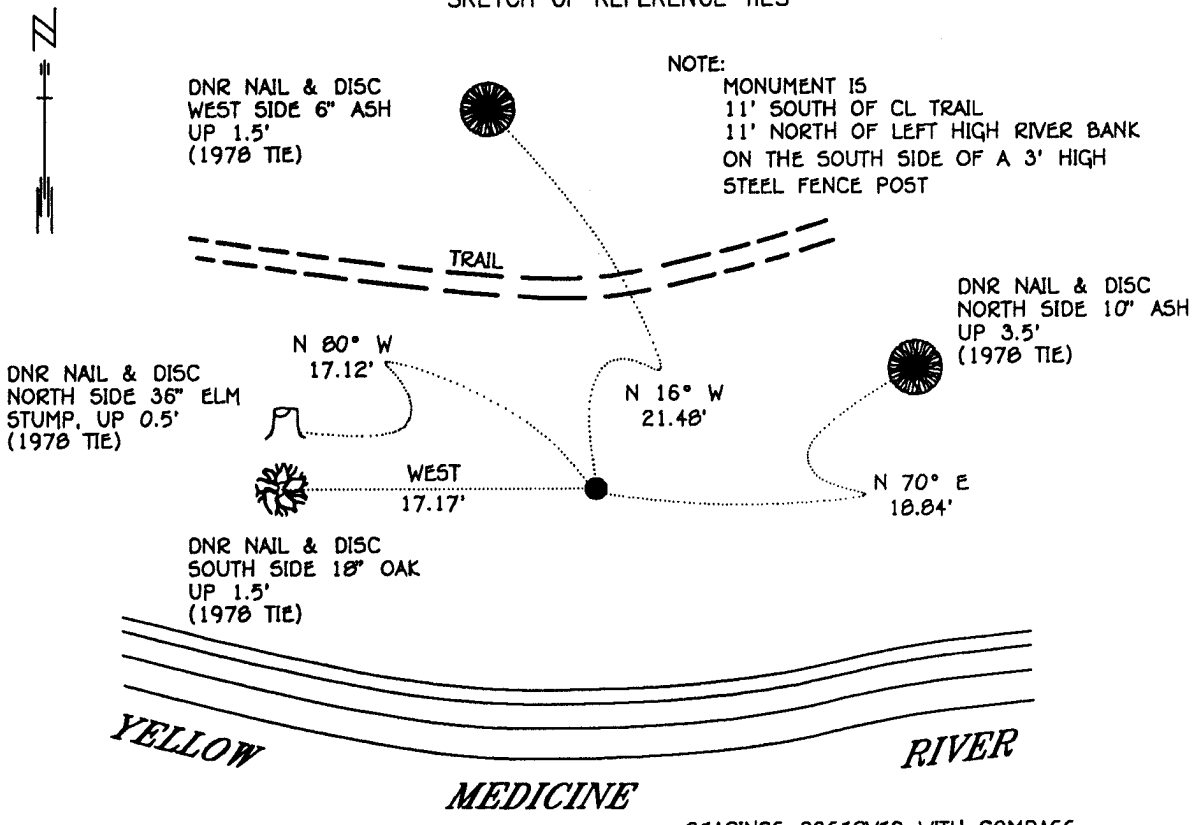
At the corner location shown on the sketch:

On 6-19-95 found a 6" x 6" CUT JASPER GRANITE STONE, DOWN 1'
DATE

left monument as found, lowered monument, removed monument (explain)

On _____ Placed a _____
DATE

SKETCH OF REFERENCE TIES



BEARINGS OBSERVED WITH COMPASS

Statement of evidence relative to this corner location is on back of page.

JBM OCT '95
SPK00277.00.00.0

I hereby certify that this document and the data contained herein was prepared by me or under my direct supervision.

Duane W. Shippel SIGNATURE 11/6/95 DATE

License Number 17003

- Land Surveyor, Professional Engineer
- County Surveyor, County Engineer

OFFICE OF THE COUNTY RECORDER
County of Yellow Medicine

I hereby certify that this document was filed in the Co. recorders office at 10:10 A.M. on the 7 day of November A.D., 1995

County Recorder *Dorinda Opstad*
By _____, Deputy

DOCUMENT NO. 210274

The DNR Bureau of Engineering contacted the following for survey information:

Minnesota Secretary of State's Office
Mn/DOT Offices in St. Paul and Willmar
Yellow Medicine County Recorder's Office
Yellow Medicine County Highway Engineer's Office
Montevideo City Engineer's Office
Bonnema Surveys of Willmar
Moseng and Zieske Surveying, Inc. of Marshall
Michael Nyberg, RLS #13145, of Carlos
West Central Land Services, Inc. of Willmar
K.B. MacKichan and Associates, Inc. of Redwood Falls

- 1864 U.S. General Land Office notes obtained from the Secretary of State's Office show the corner marked with a wood post in a mound of earth with pits. The following bearing tree was also marked:
18" Cottonwood, South 26° West, 45 links (29.70 feet)
- 1895 Surveyor's Record Book, page 520, obtained from the County Recorder's Office, contains a survey by John Norgaard, County Surveyor. Survey states that all the government corners in Section 31 were found.
- 1895 Surveyor's Record Book, page 534, obtained from the County Recorder's Office, contains a survey by John Norgaard, County Surveyor. Survey shows that a jasper stone was found at corner. The corner is shown:
2680 feet from the east quarter corner of Section 30
- 1901 Surveyor's Record Book B, pages 9 and 71, obtained from the County Recorder's Office, contain a collection of what was found or set at government corners by John Norgaard, County Surveyor, in a township re-monumentation survey. Norgaard states "found stake as located by me 6 years ago, at equal proportional distance from the north quarter post Section 31, the north quarter post Section 32, the east quarter post Section 30 and the southeast corner Section 31. A 6" by 6" by 24" jasper granite stone was set at this location, top of monument 3" above ground. The corner is shown:
2694 feet from the north quarter corner of Section 31
2704 feet from the north quarter corner of Section 32
2685 feet from the east quarter corner of Section 30
5370 feet from the southeast corner of Section 31
- 1929 Surveyor's Record Book, page 520, obtained from the County Recorder's Office, contains a survey by John Norgaard, County Surveyor. Survey shows corner but does not indicate what was found or set. The corner is shown:
2694 feet from the north quarter corner of Section 31
2685 feet from the east quarter corner of Section 31
- 1930 Surveyor's Record Book, page 534, obtained from the County Recorder's Office, contains a survey by John Norgaard, County Surveyor. Survey shows that a jasper stone was found at corner. The corner is shown:
2680 feet from the east quarter corner of Section 30

- 1977 April, a Certificate of Location of Government Corner obtained from the County Recorder's Office, signed by Lyle Moseng, RLS #11943, shows that a square cut granite was found at corner with the aid of a backhoe and testimony from Benny Iverson. The following ties are shown to corner:
- nail and bottle cap in 10" Ash, east, 18.96 feet
 - nail and bottle cap in 18" Tree, west, 17.09 feet
 - nail and bottle cap in 6" Ash, north, 24.40 feet
 - 50.40 feet north of the edge of a road
- 1977 May, a subdivision of Section 30 shown on Certificate of Surveys in the northeast quarter of Section 30 and in the east half of Section 19 obtained from West Central Land Services, Inc. shows corner but does not indicate what was found or set. The corner is shown:
- 2679.74 feet from the north quarter corner of Section 31
 - 2680.00 feet from the east quarter corner of Section 30
- 1977 May, a Certificate of Survey in the south half of Section 31 and notes obtained from Moseng and Zieske Land Surveying, Inc. show that a stone was found at corner. The following ties are shown to corner:
- nail and bottle cap in 10" Ash, east-northeast, 18.96 feet
 - nail and bottle cap in 18" Tree, west, 17.09 feet
 - nail and bottle cap in 6" Ash, north-northeast, 24.40 feet
 - 50 feet northeasterly at right angles to the northerly bank of river
 - 2687.69 feet from the north quarter corner of Section 31
 - 2685.34 feet from the east quarter corner of Section 31
 - 5370.68 feet from the southeast corner of Section 31
- 1977 May, a Certificate of Location of Government Corner obtained from the County Recorder's Office, signed by Lyle Moseng, RLS #11943, shows that a square cut granite was found at corner with the aid of a backhoe and testimony from Benny Iverson. The following ties are shown to corner:
- nail and bottle cap in 10" Ash, east, 18.96 feet
 - nail and bottle cap in 18" Tree, west-southwest, 17.09 feet
 - nail and bottle cap in 6" Ash, north, 24.40 feet
 - 50 feet northeasterly at right angles to the northerly bank of river
- The County Highway Engineer's Office has a copy of this certificate in its Corner Monument Book.
- 1978 May, October, DNR Bureau of Engineering found a 6" by 6" cut jasper granite stone down 8" in gravel at corner. Searched for but found no evidence of the GLO bearing tree. The following ties were taken to corner:
- nail and DNR disc on the west side of a 4" Ash, north-northwest, 21.48 feet
 - nail and DNR disc on the north side of an 8" Ash, east-northeast, 18.84 feet
 - nail and DNR disc on the south side of an 18" Bur Oak, southwest, 17.17 feet
 - nail and DNR disc on the north side of a 30" Elm, west, 17.12 feet
 - set steel fence post on the north side of stone

1995 June 19, DNR Bureau of Engineering found a 6" by 6" cut jasper granite stone at corner. Searched for and found record ties as shown on sketch of reference ties. The stone was found to be:

- 2681.10 feet from the east quarter corner of Section 30
- 2679.91 feet from the north quarter corner of Section 31
- 5369.48 feet from the southeast corner of Section 31
- 2687.63 feet from the north quarter corner of Section 32
- 2684.08 feet from the east quarter corner of Section 31

Analysis of the above information led the DNR Bureau of Engineering to conclude that the found stone which was set in 1901 in place of a stake that was set for corner in 1895 at the lost position marks the location of the corner.