

CERTIFICATE OF LOCATION OF GOVERNMENT CORNER

NORTH QUARTER Corner of Section 32, Township 115 N, Range 38 W, 5th P.M.

STATE OF MINNESOTA, County of YELLOW MEDICINE

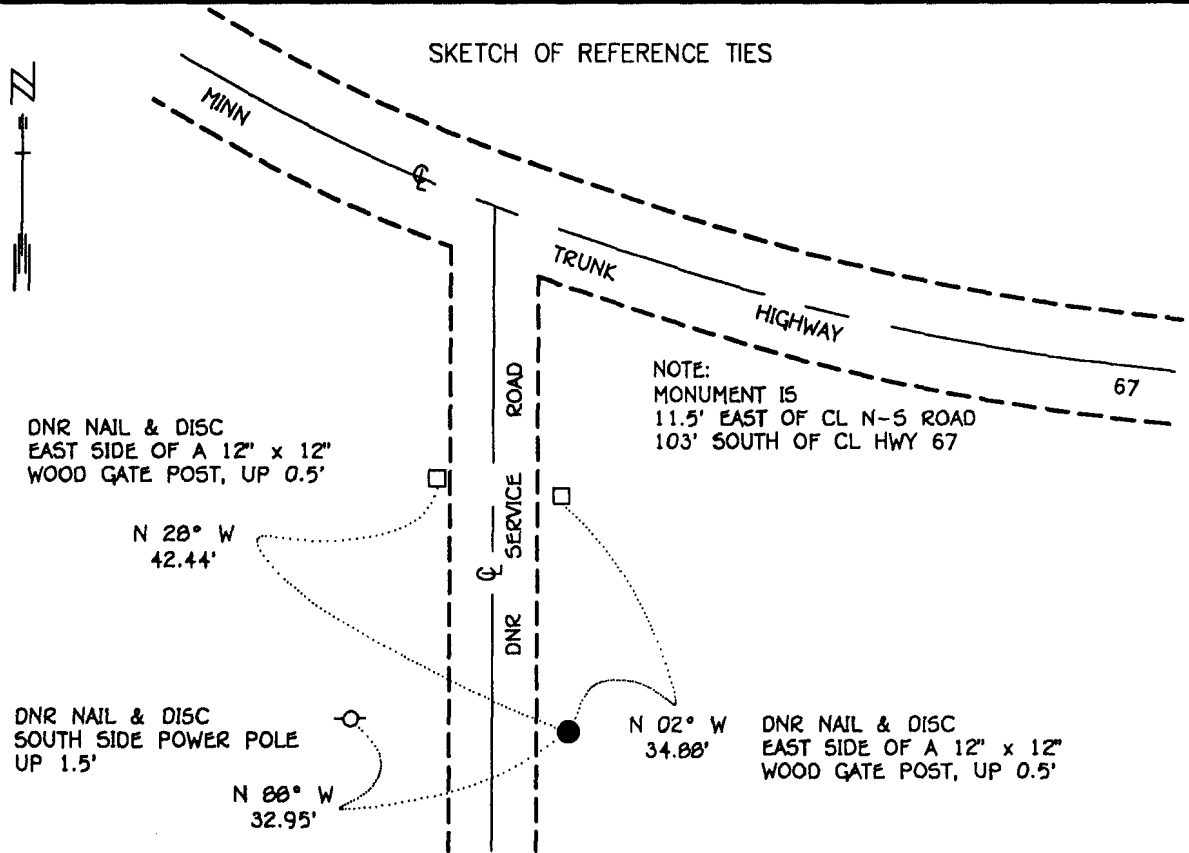
At the corner location shown on the sketch:

On _____ found a _____
DATE

left monument as found, lowered monument, removed monument (explain)

On 6-18-95 Placed a 3/4" x 24" REBAR WITH ALUMINUM CAP STAMPED
DATE "DNR SURVEY MARKER", FLUSH

SKETCH OF REFERENCE TIES



BEARINGS OBSERVED WITH COMPASS

Statement of evidence relative to this corner location is on back of page.

JBM OCT '95
SPK00277.00.00.01

I hereby certify that this document and the data contained herein was prepared by me or under my direct supervision.

Bruce W. Sheppard 11/6/95
SIGNATURE DATE

License Number 17003

Land Surveyor, Professional Engineer
 County Surveyor, County Engineer

OFFICE OF THE COUNTY RECORDER
County of Yellow Medicine

I hereby certify that this document was filed in the Co. recorders office at 10:15 A. .M. on the 7 day of November A.D., 1995

County Recorder Samuel Spade
By _____, Deputy
DOCUMENT NO. 210275

The DNR Bureau of Engineering contacted the following for survey information:

Minnesota Secretary of State's Office
Mn/DOT Offices in St. Paul and Willmar
Yellow Medicine County Recorder's Office
Yellow Medicine County Highway Engineer's Office
Montevideo City Engineer's Office
Bonnema Surveys of Willmar
Moseng and Zieske Surveying, Inc. of Marshall
Michael Nyberg, RLS #13145, of Carlos
West Central Land Services, Inc. of Willmar
K.B. MacKichan and Associates, Inc. of Redwood Falls

- 1864 U.S. General Land Office notes obtained from the Secretary of State's Office show the corner marked with a wood post in a mound of earth with pits.
- 1891 Surveyor's Record Book, page 47, obtained from the County Recorder's Office, contains a survey by Jonah Peterman, County Surveyor. Survey shows a stone at corner but does not indicate if found or set. Survey states that a stone which was set by G.E. Olds, County Surveyor, for the center of Section 32 was found to be very near correct. A distance from the center of section to the north quarter corner of Section 32 is not given.
- 1895 Surveyor's Record Book, page 534, obtained from the County Recorder's Office, contains a survey by John Norgaard, County Surveyor. Survey shows corner but does not indicate what was found or set. A distance to corner is not shown but a stake is shown at the south sixteenth corner of the southwest quarter of Section 29. The sixteenth corner is shown:
1350 feet from the northeast corner of Section 31
- 1901 Surveyor's Record Book B, pages 9 and 71, obtained from the County Recorder's Office, contain a collection of what was found or set at government corners by John Norgaard, County Surveyor, in a township re-monumentation survey. Norgaard states "found quarter post as located by me 6 years ago". The corner is shown:
2704 feet from the northeast corner of Section 31
- 1930 Surveyor's Record Book, page 534, obtained from the County Recorder's Office, contains a survey by John Norgaard, County Surveyor. Survey shows corner but does not indicate what was found or set. A distance to corner is not shown but a stake is shown at the south sixteenth corner of the southwest quarter of Section 29. The sixteenth corner is shown:
1350 feet from the northeast corner of Section 31
- No Date A right-of-way map for State Trunk Highway Number 67 obtained from Mn/DOT in St. Paul shows a symbol for corner but does not indicate what was found or set and no distances or angles are shown to it.

1994 September 28, DNR Bureau of Engineering visited the area of corner and found its location to be in an area that was cut for the construction of Highway 67.

Located an old downed east-west fence 80 feet westerly of corner and an old east-west ridge line from 600 feet to 1000 feet easterly of corner. Also, located a north-south fence 1000 feet southerly of corner.

Located an old rotted wooden corner fence post with maintained fences north and south and a downed fence west in area of the center of Section 32. Searched around the fence post for the record stone but only found numerous boulders and field stones.

Located an old downed corner fence post with downed fences north, south, east, and west in the area of the S 1/16 SW 1/4 of Sec. 29. Scanned the area with an electronic metal detector but no metal monuments were found. The corner fence post was found to be:

1356.6 feet from the northeast corner of Section 31

Computed a position for the north quarter corner of Section 32 at the intersection of the following lines:

- A) the northerly extension of a line from the corner fence post found in the area of the center of Section 32 thru the north-south fence located 1000 feet southerly of the area of corner
- B) the easterly extension of the east-west fence located 80 feet westerly of the area of corner

The computed position was found to be:

2504.62 feet from the northeast corner of Section 32

2687.63 feet from the northeast corner of Section 31

2818.93 feet from the corner fence post found in the area of the center of Section 32

63.47 feet north and 0.40 of a foot east of the lost position for corner

1.35 feet north of the westerly extension of the east-west ridge line located from 600 feet to 1000 feet easterly of corner

11.5 feet east of the center line of driveway

Conducted a field search at the computed position for corner by scanning the area with an electronic metal detector but no metal attraction was obtained.

The old downed corner fence post located in the area of the S 1/16 SW 1/4 Sec 29 was found to be:

37.59 feet north and 10.79 feet east of the computed sixteenth corner

1995 June 18, DNR Bureau of Engineering set a DNR Survey Marker at the computed position for corner as shown on the sketch of reference ties.

Analysis of the above information led the DNR Bureau of Engineering to conclude that the computed position for corner at the projected intersection of fences southerly and westerly marks the obliterated location of the corner.