

CERTIFICATE OF LOCATION OF GOVERNMENT CORNER

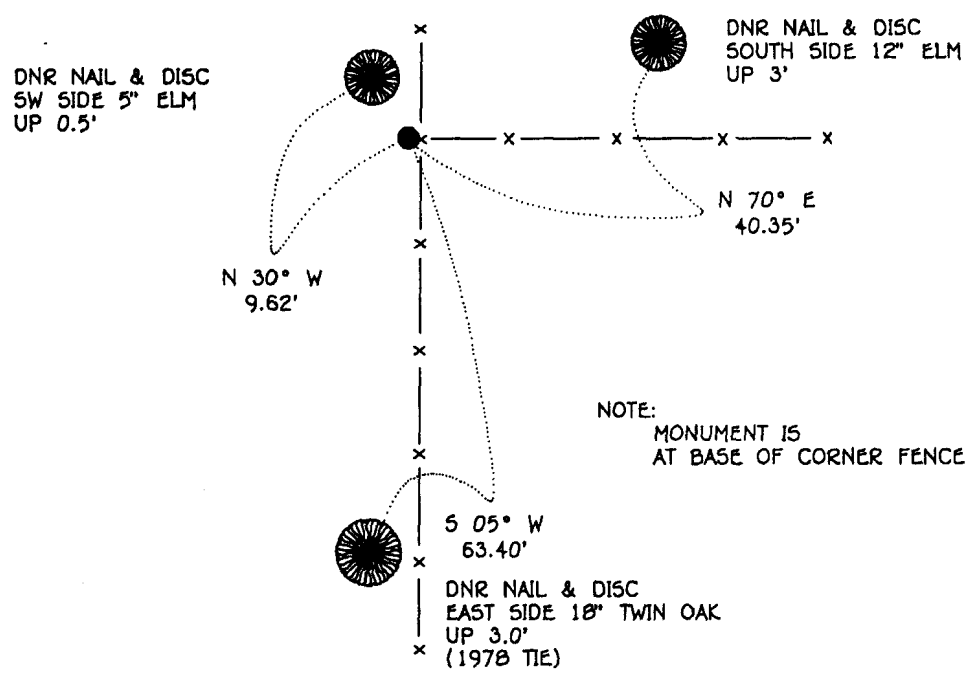
NORTH QUARTER Corner of Section 31, Township 115 N, Range 38 W, 5th P.M.

STATE OF MINNESOTA, County of YELLOW MEDICINE

At the corner location shown on the sketch:

- On 6-21-95 found a 1/2" INSIDE DIAMETER IRON PIPE WITH A PLASTIC CAP
DATE STAMPED "RLS #10396", UP 0.4'
- left monument as found, lowered monument, removed monument (explain)
- On _____ Placed a _____
DATE

SKETCH OF REFERENCE TIES



NOTE:
MONUMENT IS
AT BASE OF CORNER FENCE POST

BEARINGS OBSERVED WITH COMPASS

Statement of evidence relative to this corner location is on back of page.

JBM OCT '95
SPK.00277.00.00.01

I hereby certify that this document and the data contained herein was prepared by me or under my direct supervision.

Kevin W. Stepped 11/6/95
SIGNATURE DATE

License Number 17003

- Land Surveyor, Professional Engineer
- County Surveyor, County Engineer

OFFICE OF THE COUNTY RECORDER
County of Yellow Medicine

I hereby certify that this document was filed in the Co. recorders office at 10:20 A .M. on the 7 day of November A.D., 1995

County Recorder Roman J. Spence
By _____, Deputy

DOCUMENT NO. 210276

The DNR Bureau of Engineering contacted the following for survey information:

Minnesota Secretary of State's Office
Mn/DOT Offices in St. Paul and Willmar
Yellow Medicine County Recorder's Office
Yellow Medicine County Highway Engineer's Office
Montevideo City Engineer's Office
Bonnema Surveys of Willmar
Moseng and Zieske Surveying, Inc. of Marshall
Michael Nyberg, RLS #13145, of Carlos
West Central Land Services, Inc. of Willmar
K.B. MacKichan and Associates, Inc. of Redwood Falls

- 1864 U.S. General Land Office notes obtained from the Secretary of State's Office show that a wood post was set to mark corner with the following bearing trees marked:
6" Oak, North 80° East, 10 links (6.60 feet)
10" Lind, South 74° West, 20 links (13.20 feet)
The corner is also shown:
4.70 chains (310.20 feet), West of the foot of a bluff
5.30 chains (349.80 feet), East of the top of a bluff
- 1895 Surveyor's Record Book, page 520, obtained from the County Recorder's Office, contains a survey by John Norgaard, County Surveyor. Survey states that all the government corners in Section 31 were found.
- 1901 Surveyor's Record Book B, pages 9 and 71, obtained from the County Recorder's Office, contain a collection of what was found or set at government corners by John Norgaard, County Surveyor, in a township re-monumentation survey. Norgaard states "found quarter post as located by me 6 years ago". The corner is shown:
2694 feet from the northeast corner of Section 31
- 1929 Surveyor's Record Book, page 520, obtained from the County Recorder's Office, contains a survey by John Norgaard, County Surveyor. Survey shows corner but does not indicate what was found or set. The corner is shown:
2694 feet from the northeast corner of Section 31
2902 feet from the northeast corner of Section 36
5494 feet from the north quarter corner of Section 6
- 1977 May, a subdivision of Section 30 shown on Certificate of Surveys in the northeast quarter of Section 30 and in the east half of Section 19 obtained from West Central Land Services, Inc. shows that an iron pipe with a plastic cap stamped "RLS #10396" was set for corner but does not indicate how its location was determined. The corner is shown:
2679.74 feet from the northeast corner of Section 31
2887.13 feet from the northeast corner of Section 36
Computations using information on the subdivision of Section 30 reveal that the corner is:
149.76 feet north of a straight line between adjoining section corners

1977 May, a Certificate of Survey in the south half of Section 31 and notes obtained from Moseng and Zieske Land Surveying, Inc. show that the iron pipe set by Byron Dahle, RLS #10396, was found at corner. The corner is shown:

- at the intersection of fences
- 2687.69 feet from the northeast corner of Section 31
- 2881.64 feet from the northeast corner of Section 36
- 5495.85 feet from the north quarter corner of Section 6

Computations using information on the subdivision of Section 31 reveal that the corner is:
145.43 feet north of a straight line between adjoining section corners

1978 January, a Certificate of Survey in the southwest quarter of the northeast quarter of Section 30 obtained from West Central Land Services, Inc. shows that an iron monument was found at corner.

1978 May, DNR Bureau of Engineering found an iron pipe with a plastic cap stamped "RLS #10396" at corner. Searched for but found no evidence of the GLO bearing trees. The following ties were taken to corner:

- on the west side of a corner fence post with very old fences north, south and east
- 2" Hackberry, northeast, 0.7 of a foot
- nail and DNR disc on the west side of an 18" Triple Elm, northeast, 35.09 feet
- nail and DNR disc on the east side of a 30" Elm, southeast, 26.56 feet
- nail and DNR disc on the east side of a 14" Twin Bur Oak, south-southwest, 63.42 feet

1995 June 21, DNR Bureau of Engineering found the iron pipe that was found at corner in 1978. Searched for and found one record tie as shown on sketch of reference ties. The iron pipe was found to be:

- 2679.91 feet from the northeast corner of Section 31
- 2887.52 feet from the northeast corner of Section 36
- 150.67 feet north of a straight line between adjoining section corners
- 151.22 feet north and 78.82 feet east of the computed lost position for corner

Conducted a field search at the computed lost position for corner by scanning the area with an electronic metal detector but no metal attraction was obtained. Also, searched for but found no evidence of the GLO bearing trees.

Analysis of the above information led the DNR Bureau of Engineering to conclude that the found iron pipe which was set in 1977 next to a corner fence post with fences north, south and east marks the obliterated location of the corner.